



RESEARCH &  
INNOVATION

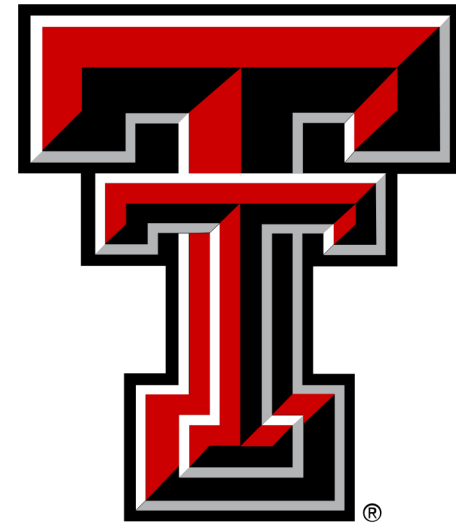
# Introduction for CPIRA

Colleen Fitzgerald  
Associate Vice President for  
Research

[colleen.fitzgerald@tamucc.edu](mailto:colleen.fitzgerald@tamucc.edu)



NATIONAL ENDOWMENT FOR THE  
**Humanities**



# National Science Foundation Activities

- Program officer, Documenting Endangered Languages, a joint initiative with NEH
- Communications team, SBE Directorate (wrote 2 press releases and numerous blog posts)
  - [https://www.nsf.gov/discoveries/disc\\_summ.jsp?cntn\\_id=138469](https://www.nsf.gov/discoveries/disc_summ.jsp?cntn_id=138469)
  - [https://www.nsf.gov/discoveries/disc\\_summ.jsp?cntn\\_id=190174&org=NSF](https://www.nsf.gov/discoveries/disc_summ.jsp?cntn_id=190174&org=NSF)
- Ran panels for two programs in Division of Graduate Education
  - Graduate Research Fellowship Program (DGE/EHR)
  - Innovations in Graduate Education (DGE/EHR)
- SBE rep for Partnerships for International Research and Education (OISE)
- Co-review and co-funded with programs in these divisions: HRD, DEB, IIS, OPP, plus all 3 SBE divisions
- Secured co-funding from funds dedicated to Artificial Intelligence, Robust and Reliable Science, Science of Broadening Participation, Minority-Serving Institutions, HBCUs,
- Served on two of NSF's Ten Big Ideas
  - NSF INCLUDES
  - Navigating the New Arctic
- Many outreach presentations for a variety of different external audiences

# NSF's Ten Big Ideas

[https://www.nsf.gov/news/special\\_reports/big\\_ideas/](https://www.nsf.gov/news/special_reports/big_ideas/)

## RESEARCH IDEAS

**HARNESSING THE DATA REVOLUTION**

**Harnessing the Data Revolution**

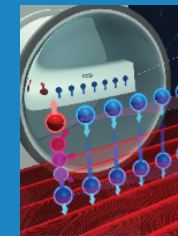
**Future of Work at the Human-Technology Frontier**



**Windows on the Universe**



**Quantum Leap**



**Understanding the Rules of Life: Predicting Phenotype**



**Navigating the New Arctic**

## PROCESS IDEAS

**Mid-scale Research Infrastructure**



**NSF 2026**



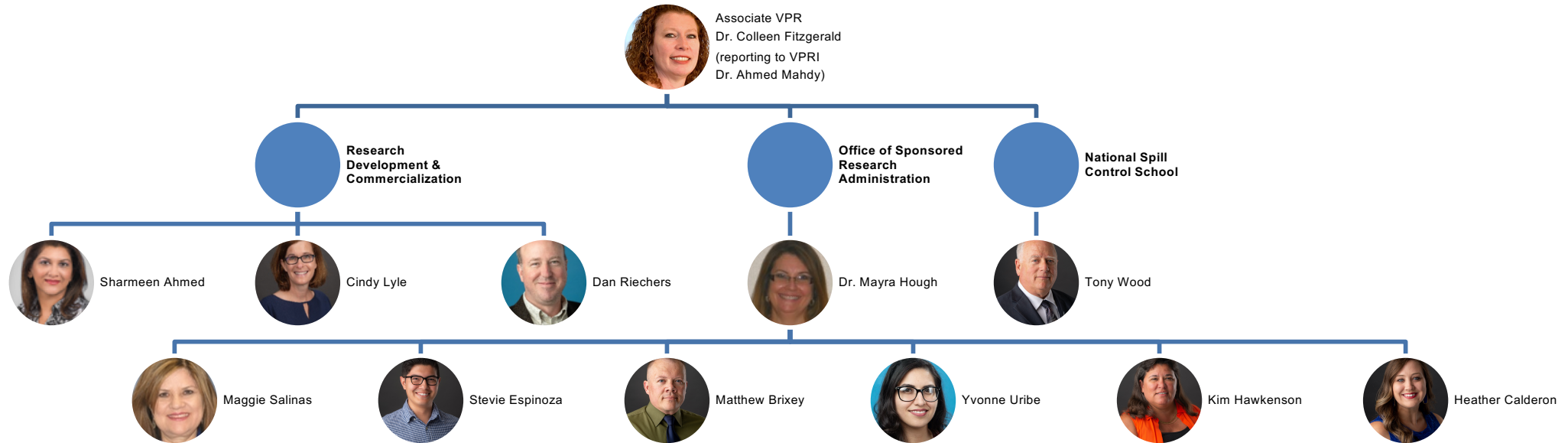
**Growing Convergence**



**NSF INCLUDES**



# Reporting Units (3)





# Priorities

- Increase grant submissions
- Increase success rates on submissions
- Foster interdisciplinary research, both funded and unfunded

# Some Current Activities

- Research Week, October 21-25
- NSF Resubmission Consultation (doodle poll sign up at <https://doodle.com/poll/7psqxu6yseqik3zu> )
- Humanities Fellowship Panel, November 4
- Research Café, November 13
- Team Research, November 15
- NSF Former Program Officer Session, November 20
- NSF Grant-Writing Workshop (tentatively January, the week before classes start)
- R&I Events at <http://research.tamucc.edu/randi-events.html>