

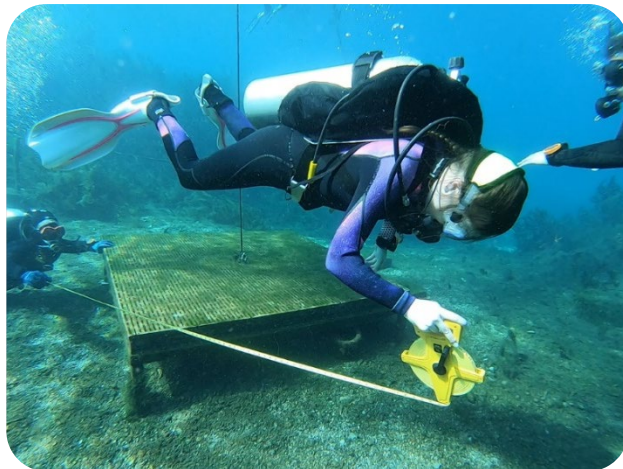


News and announcements

Important Program Updates

Course Name Updates:

Open Water Proficiency dives have now been revised as Scientific Dives, offered monthly. The Scientific Diver certification requires 11 Scientific Dives and 6 hours of bottom time. Register for Scientific Dives using the link below.



Training Schedule Updates

Be sure to register before the cutoff date!

[Register for Dive Training!](#)

Upcoming Training:

Course	Start Date	Registration Cutoff date
Scientific Dives	September 27th	September 10th
Open Water Evaluation	September 28th	September 13th
Rescue Diver	October 7th	September 22nd
Confined Water Evaluation	October 19th	October 4th
Pool Proficiency Dive	October 22nd	October 7th
Open Water Evaluation	October 27th	October 12th
Scientific Dives	October 29th	October 14th

Tech Tip

Carry cylinders with the valve facing away from your hand



Several accidents have been documented where the handler will accidentally roll the valve open with the with the valve facing their hand. With 3000 PSI of pressure behind an open cylinder, the air pressure can break the skin and blow one large bubble into the bloodstream that can causes a dangerous embolism.

Always carry cylinders with the valve facing away
from your palm
