

# BCSSE/NSSE Combined Report 2012/2013



PLANNING &  
INSTITUTIONAL  
RESEARCH



# What is BCSSE?

The Beginning College Survey of Student Engagement (BCSSE) collects data about first year college student's high school academic and co-curricular experiences, in addition to their expectations for engagement during the first year of college.

The BCSSE has been used in addition to the National Survey of Student Engagement since 2007 at 4 year colleges and institutions around the country. 2012 was the third administration for the BCSSE at TAMUCC. The BCSSE is designed to be paired with the NSSE results at the end of the student's first year, so that comparisons can be made between expectations and actual experiences.

# What is NSSE?

The National Survey of Student Engagement (NSSE), which is a surveying project that began from a generous grant provided by Pew Charitable Trusts, and is sustained by institutional participation fees, has been collecting data from students at 4 year colleges and institutions around the country since 2000, with 613 institutions participating in the spring 2013 survey.

The design of the survey is aimed at collecting data relevant to the undergraduate student experience and participation in academics and extra-curricular activities.

# Survey Administrations

The BCSSE survey instrument was administered at TAMUCC in first year seminar courses (UCCP) during the first week and a half of the Fall 2012 semester (August 22<sup>th</sup> – August 29<sup>th</sup>, 2012). The surveys were distributed in UCCP courses and picked up during the class periods. 1,821 surveys were distributed, and **67%** of the surveys were completed (**n=1,284**).

NSSE sampling procedures required sending the survey to freshman and senior students via email. The online survey was available for students from the initial invitation on February 12<sup>th</sup> through April 1, 2012. TAMUCC invited 1,814 Freshmen and 1,869 seniors to participate in the online survey via email. **14%** of contacted students (**n= 523**) completed the survey and (n= 138) were first year students. Additionally, there were 53 Freshmen and 79 Seniors, 4 % of those invited, who partially complete the survey. Their responses are included

*NOTE: Frequencies are rounded to the nearest whole number. Therefore, totals may not equal 100%.*

There were 18 items that were similar or identical in the Fall 2012 BCSSE and Spring 2013 NSSE survey instruments. These questions were designed to provide cross sectional data between expectations of first year students and/or their high school engagement, and their actual end of year engagement. This report illustrates the cross sectional results of these matched items.

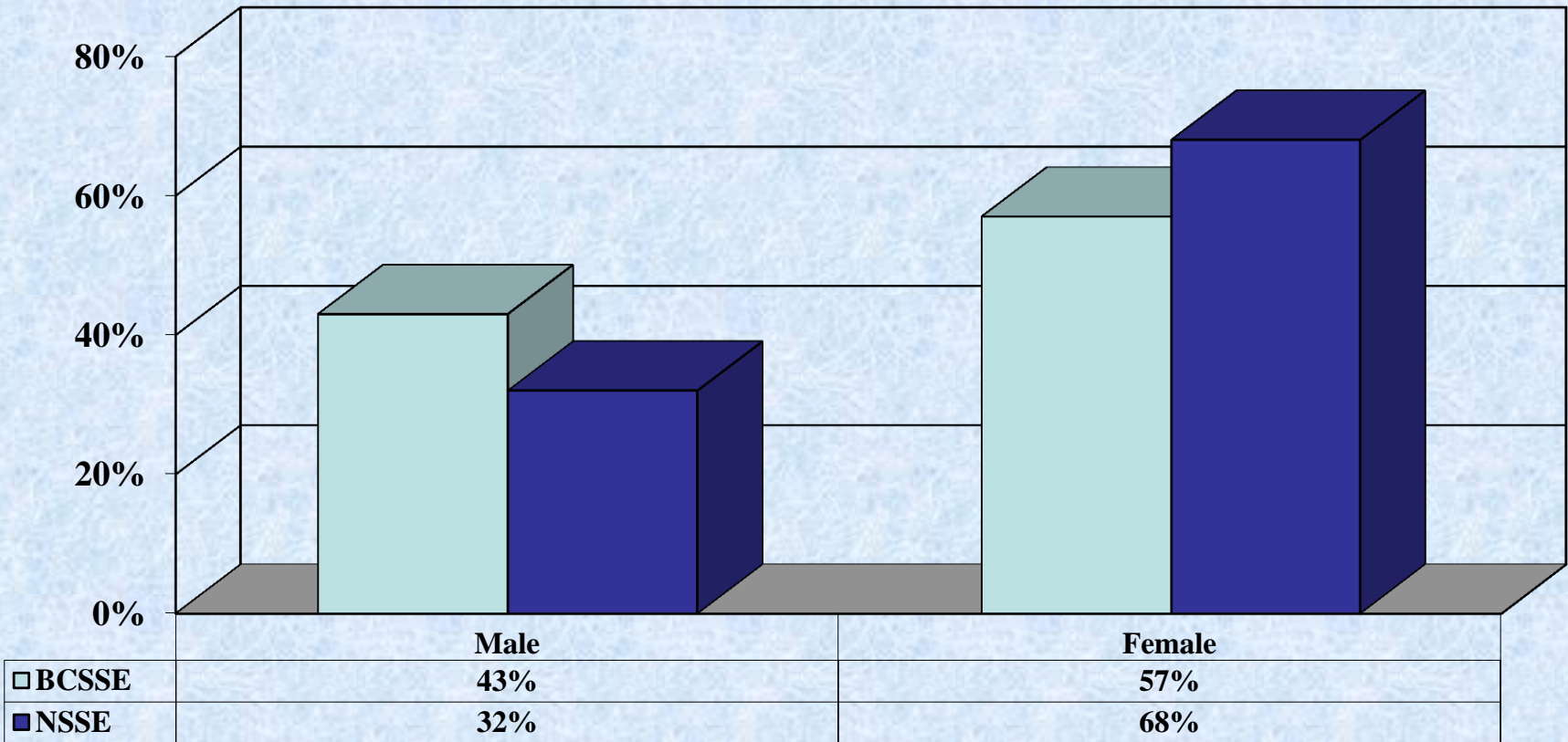
# BCSSE/NSSE Combined Report



## Demographics



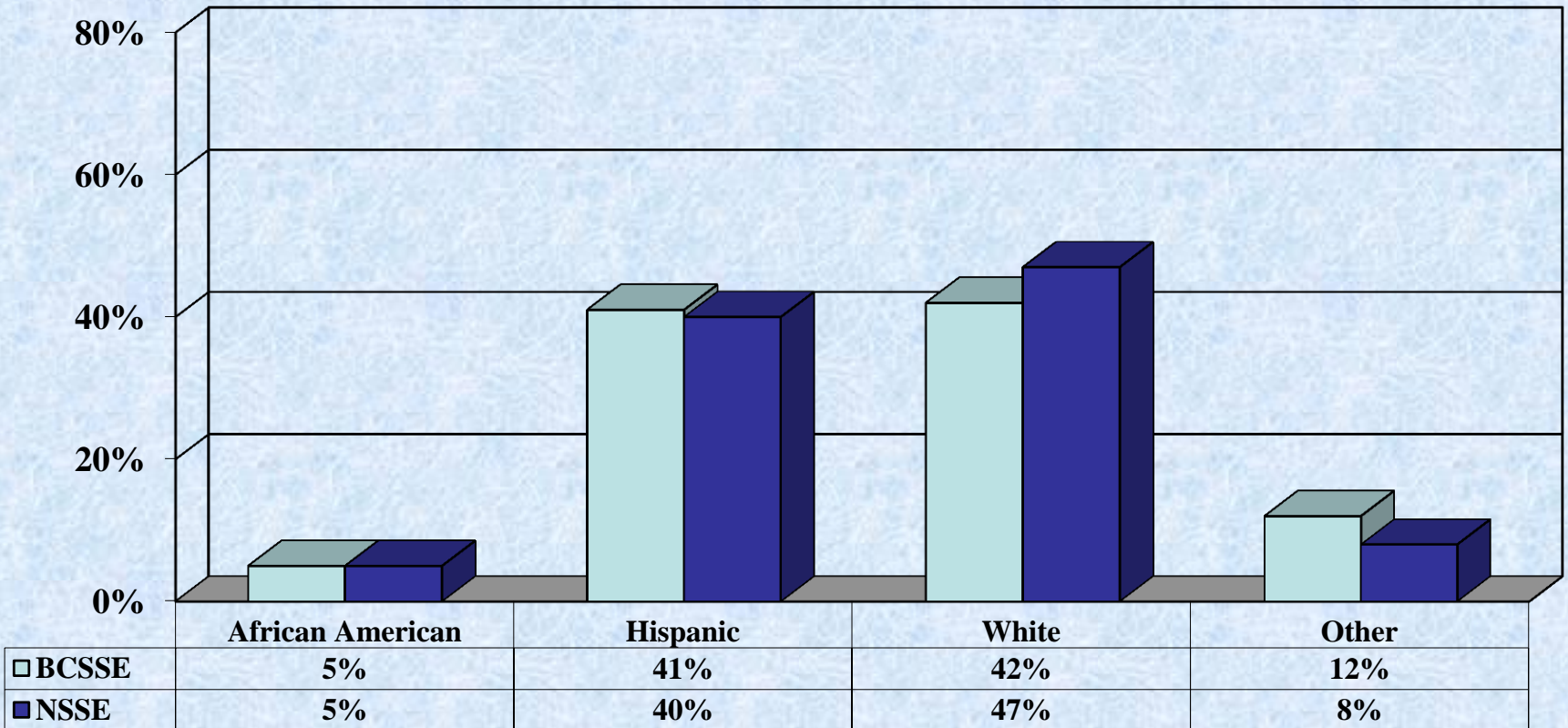
# BCSSE/NSSE Combined Report



**Demographics – Gender**



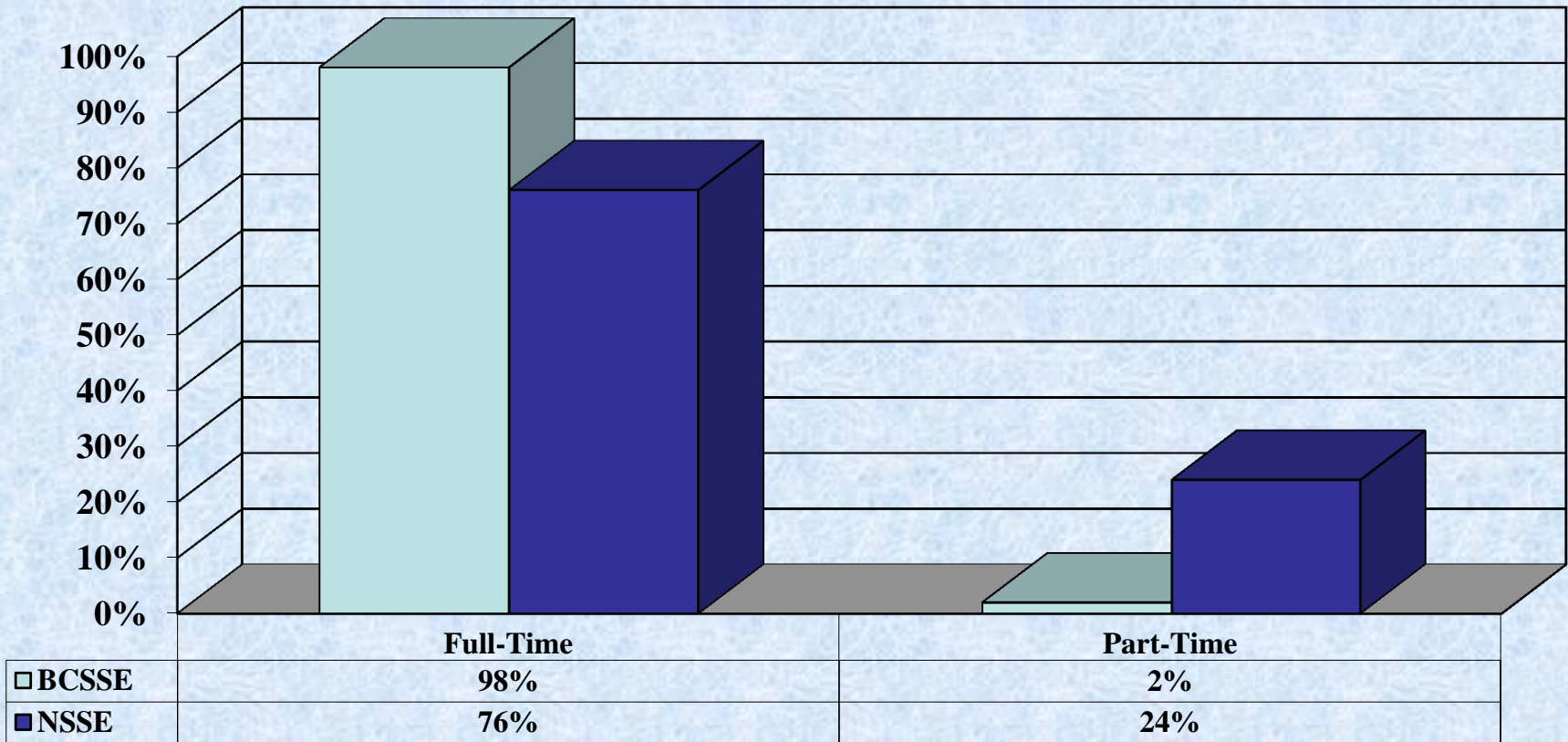
# BCSSE/NSSE Combined Report



**Demographics – Student Ethnicity**



# BCSSE/NSSE Combined Report



**Demographics – Class Enrollment Status**



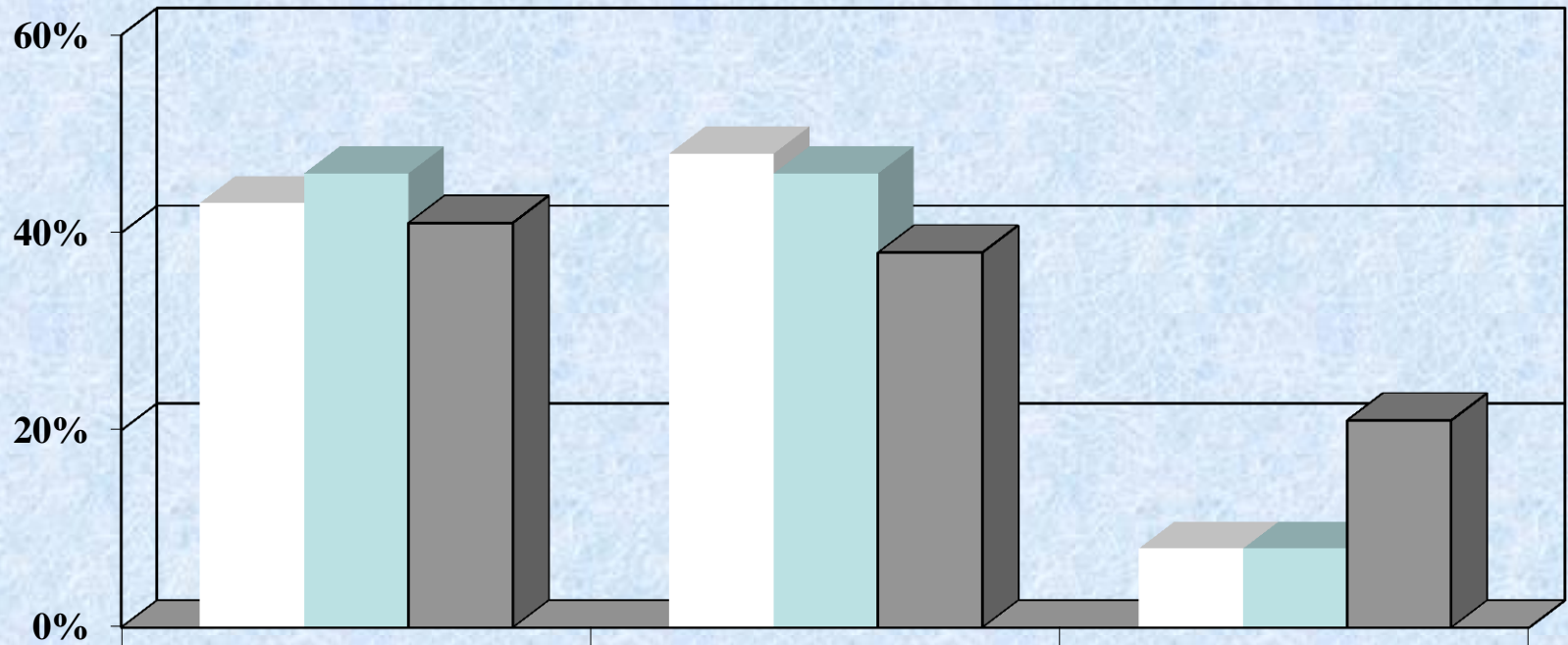
# BCSSE/NSSE Combined Report



## Frequency Report



# BCSSE/NSSE Combined Report

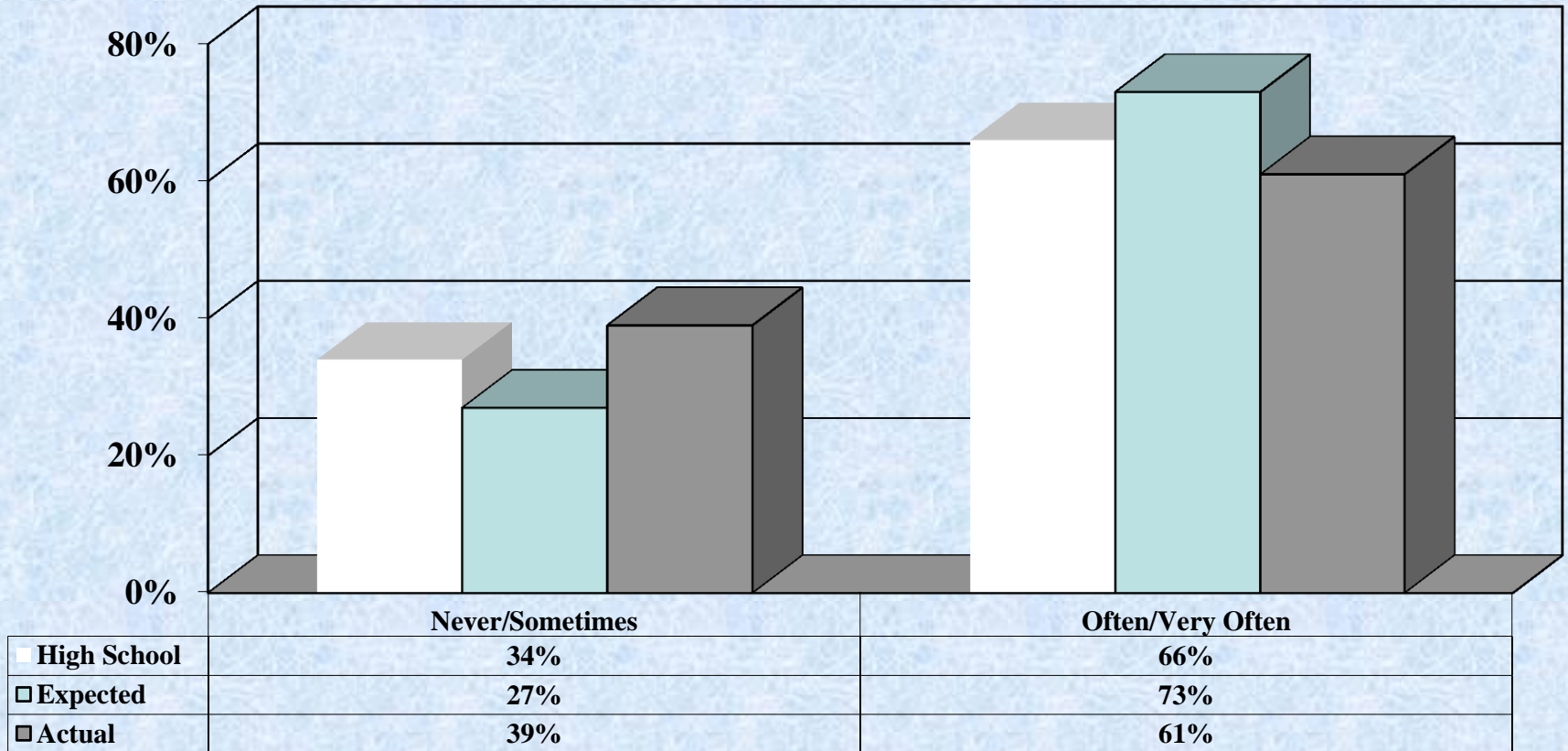


	A or A-	B or B+	B- or Lower
High School	43%	48%	8%
Expected	46%	46%	8%
Actual	41%	38%	21%

**Student Grades**



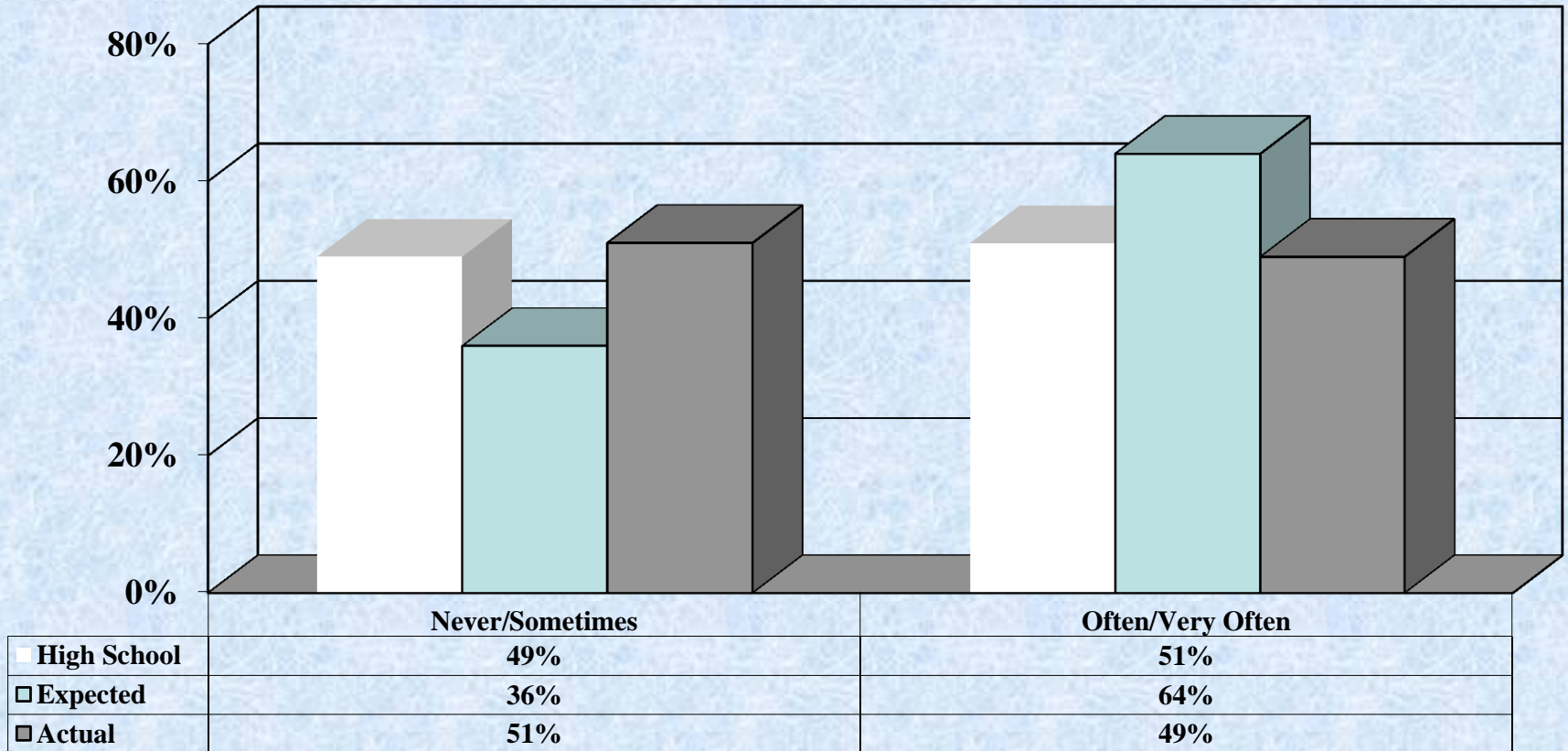
# BCSSE/NSSE Combined Report



**Students asked questions in class or contributed to class discussions**



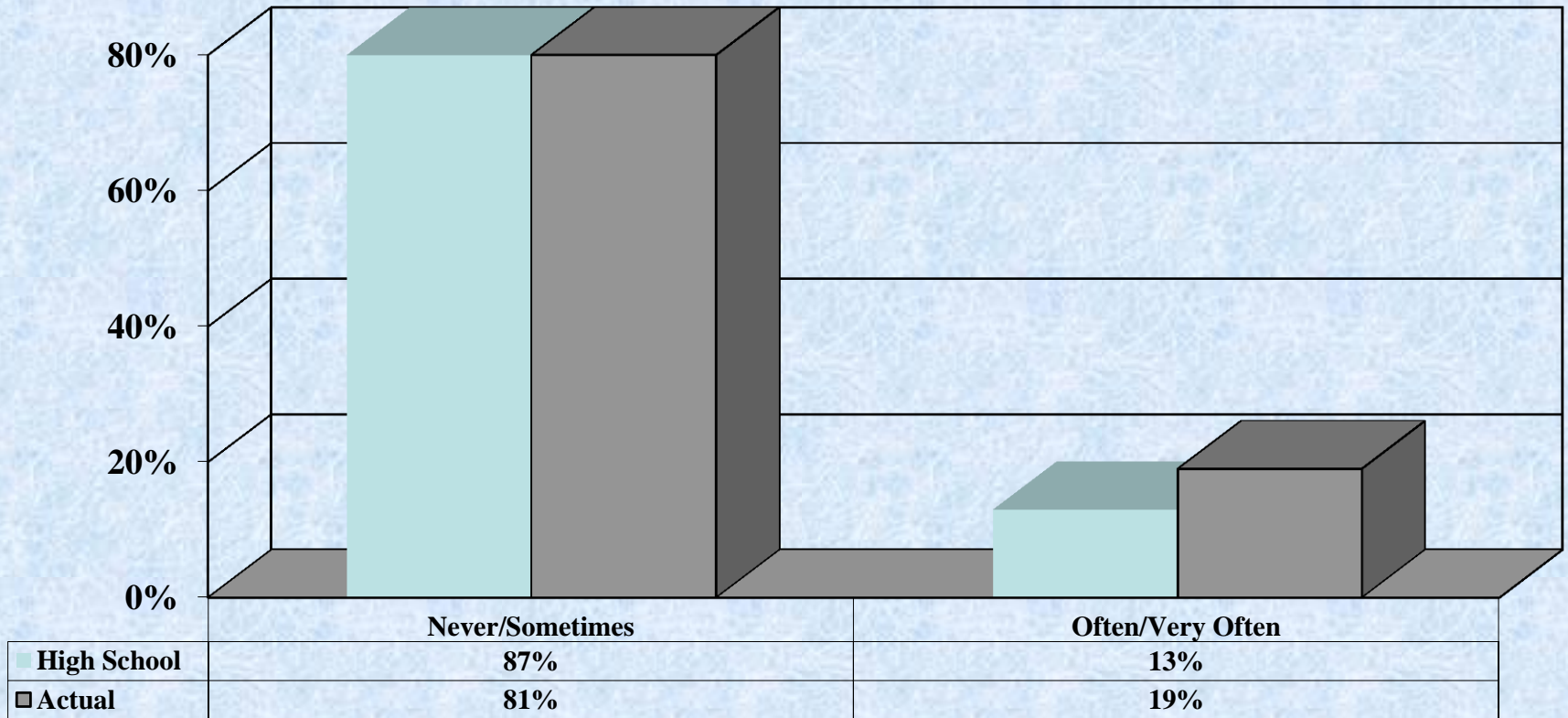
# BCSSE/NSSE Combined Report



**Student made a class presentation**



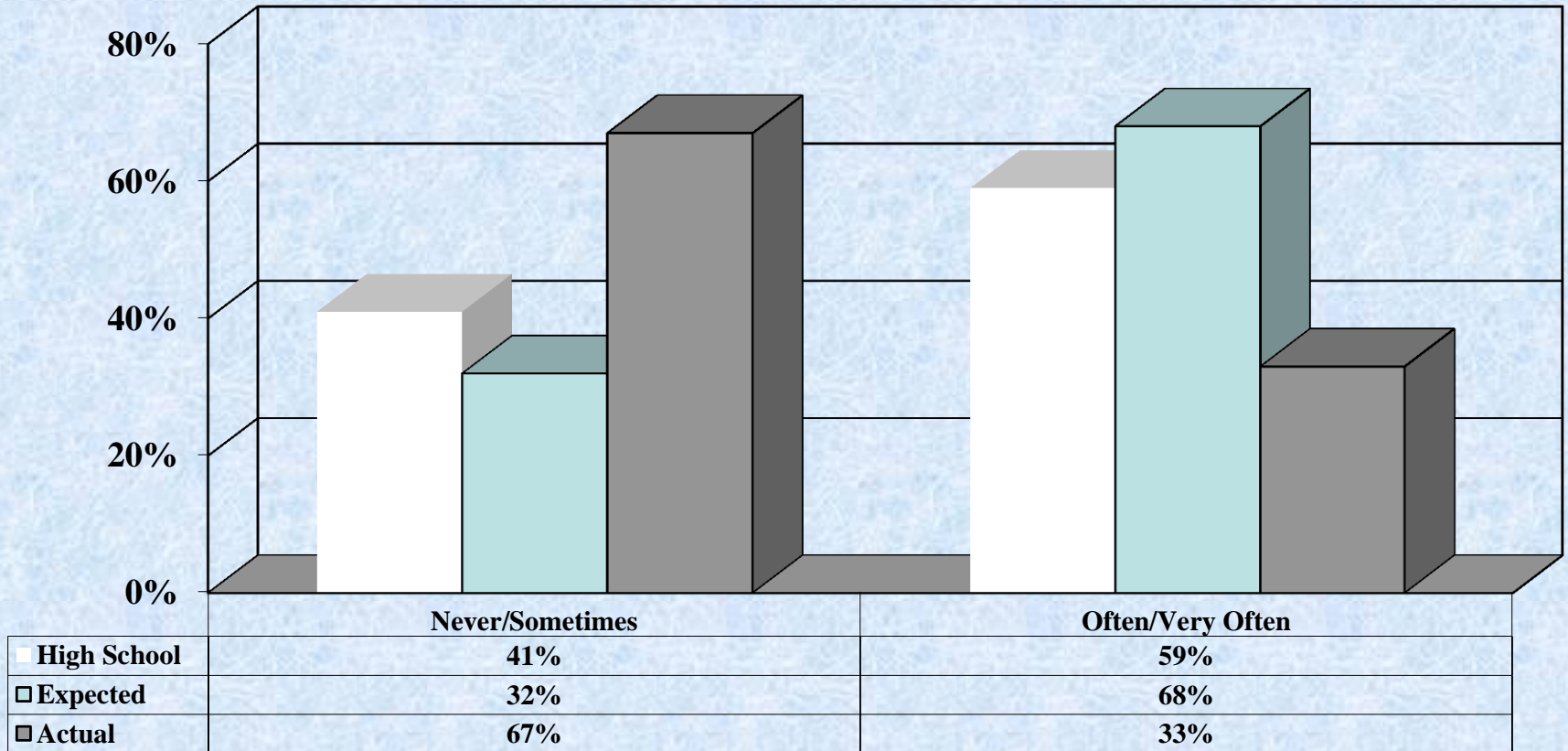
# BCSSE/NSSE Combined Report



**Student came to class without completing readings or assignments**



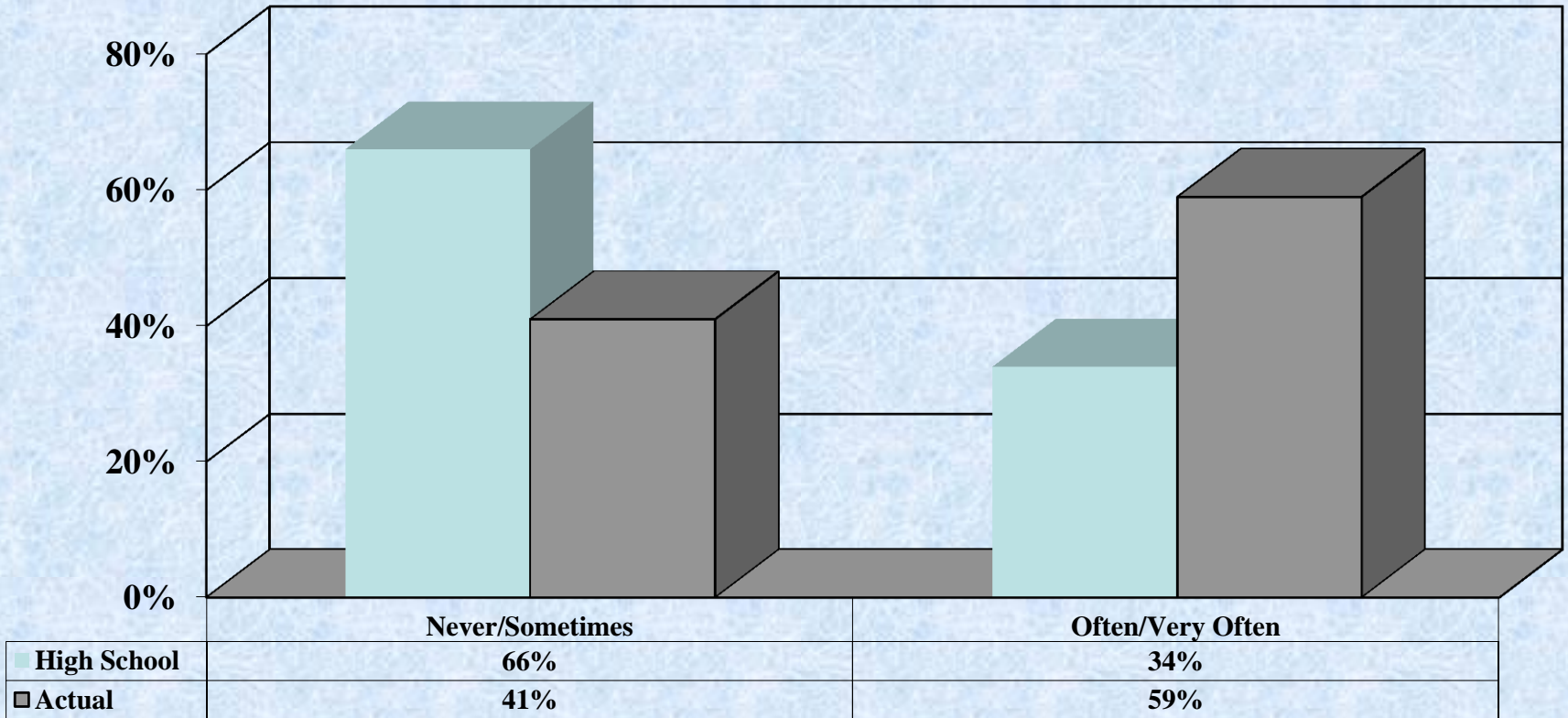
# BCSSE/NSSE Combined Report



**Student discussed grades or assignments with an instructor**



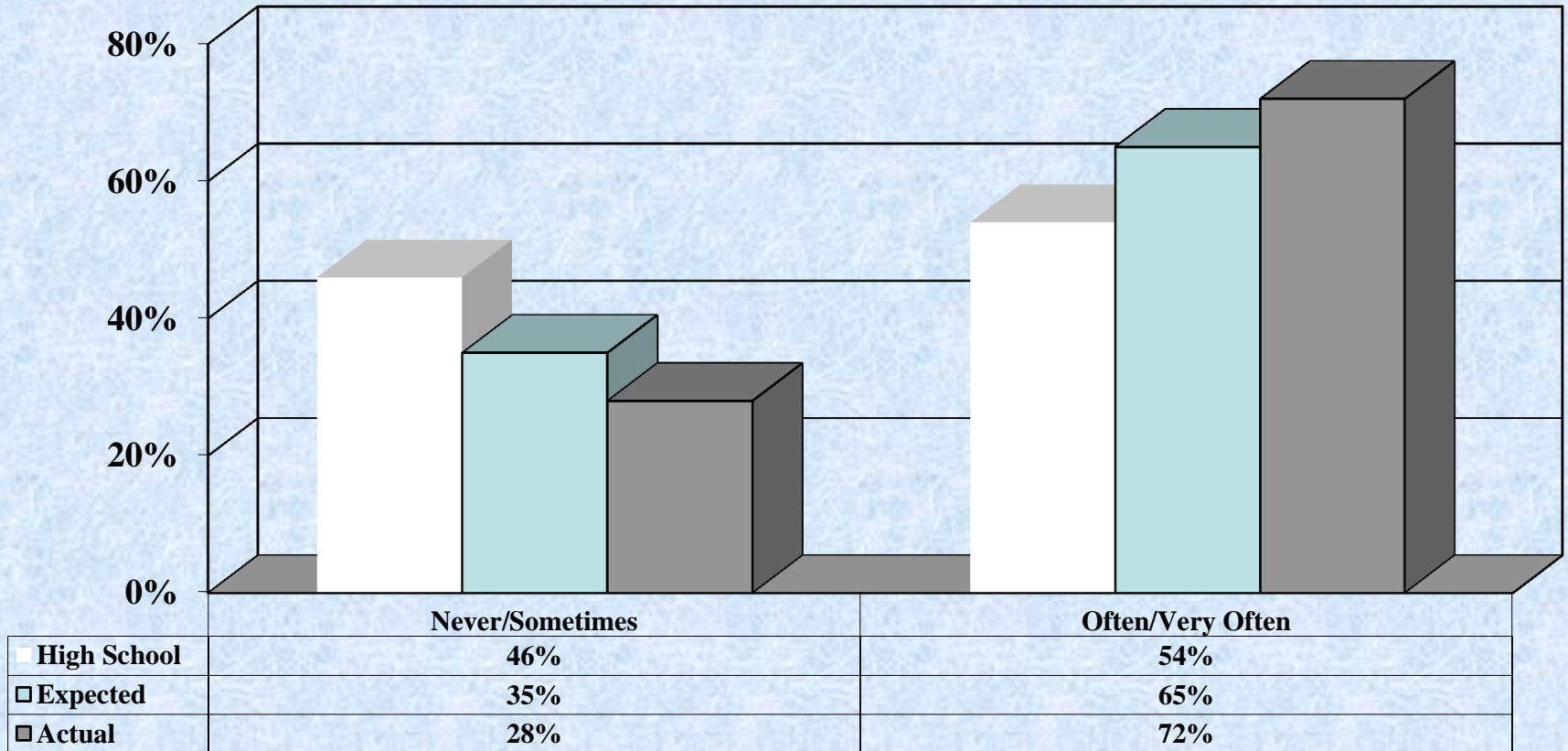
# BCSSE/NSSE Combined Report



**Student prepared two or more drafts of a paper or assignment before submittal**



# BCSSE/NSSE Combined Report

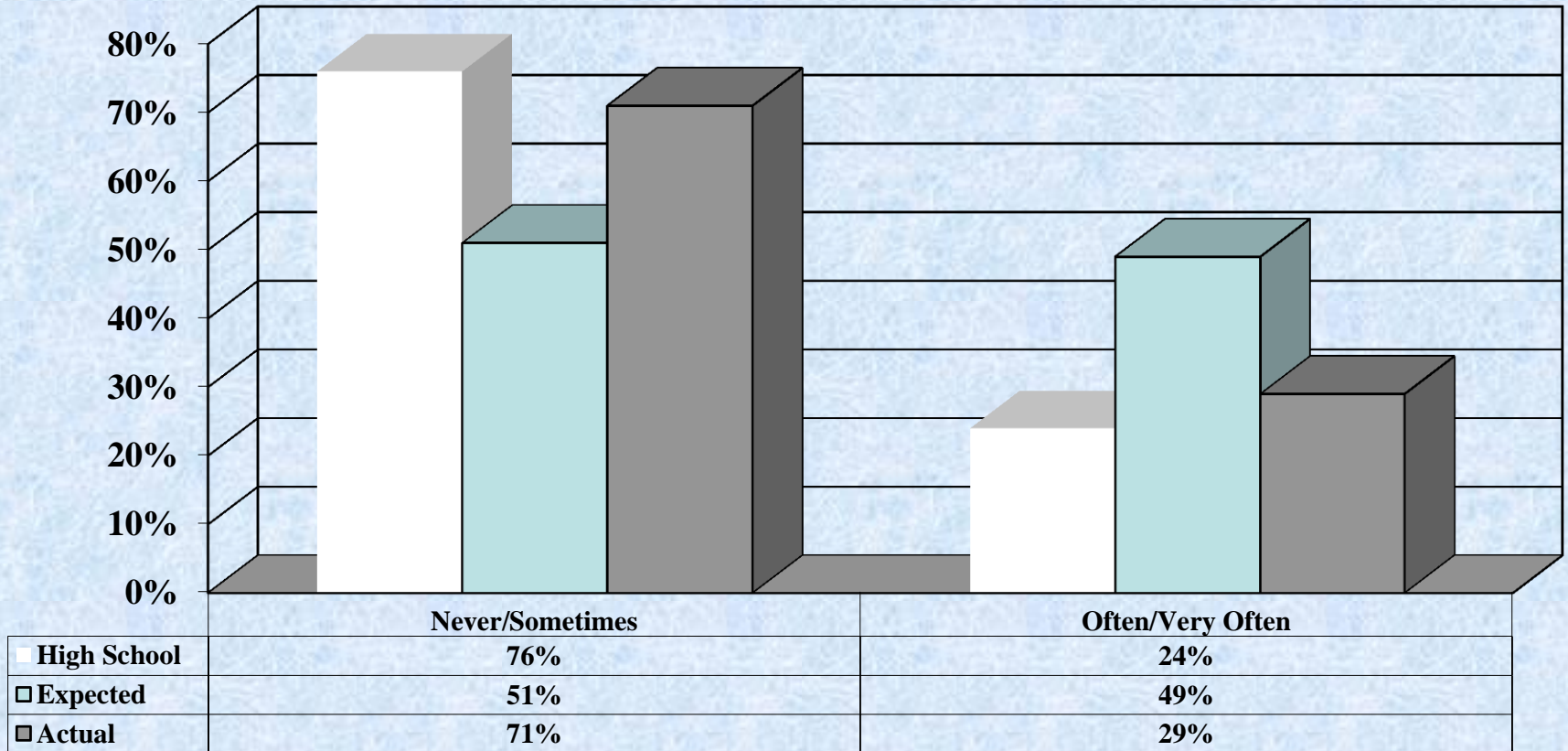


**Student had serious conversations with students of a different race or ethnicity than their own**





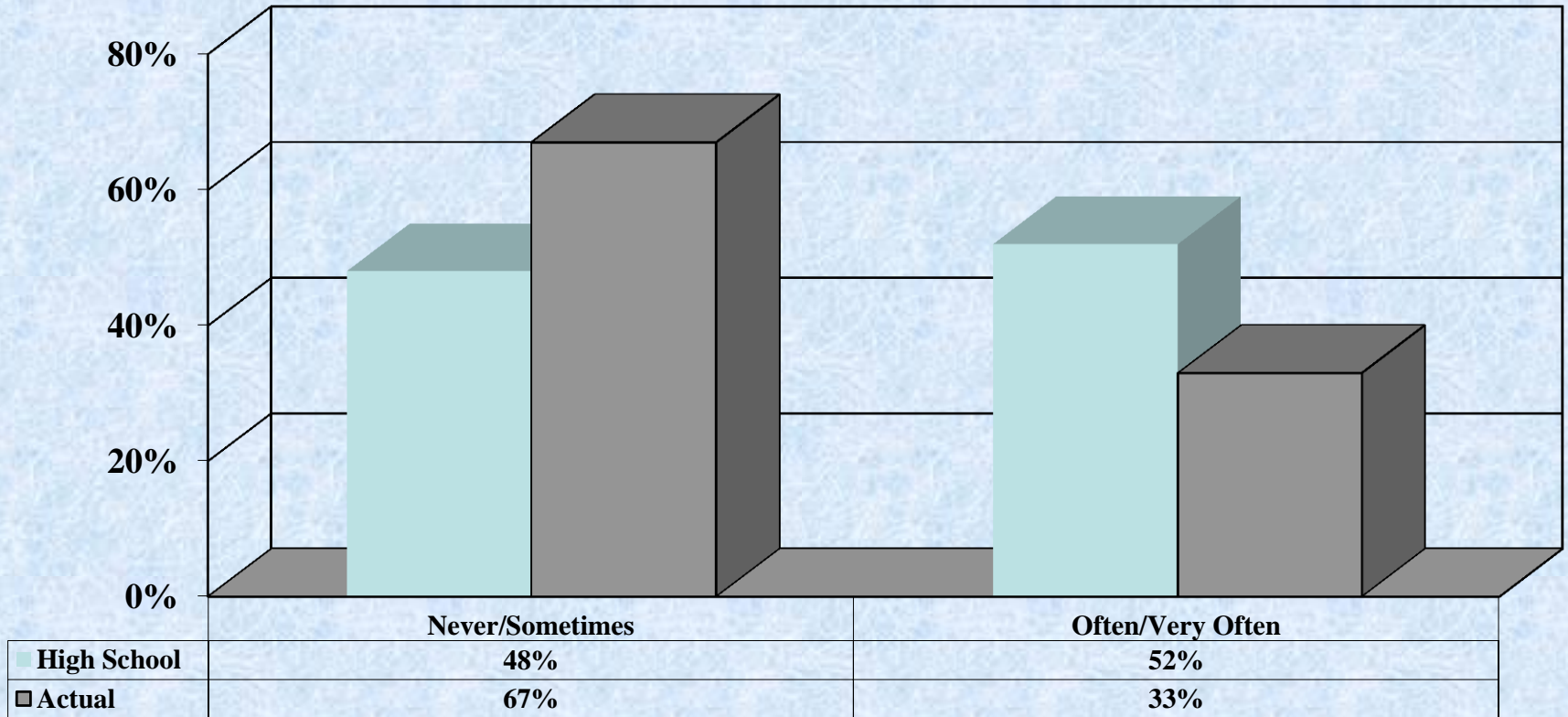
# BCSSE/NSSE Combined Report



**Student discussed ideas from class or coursework with teacher/faculty members outside of class.**



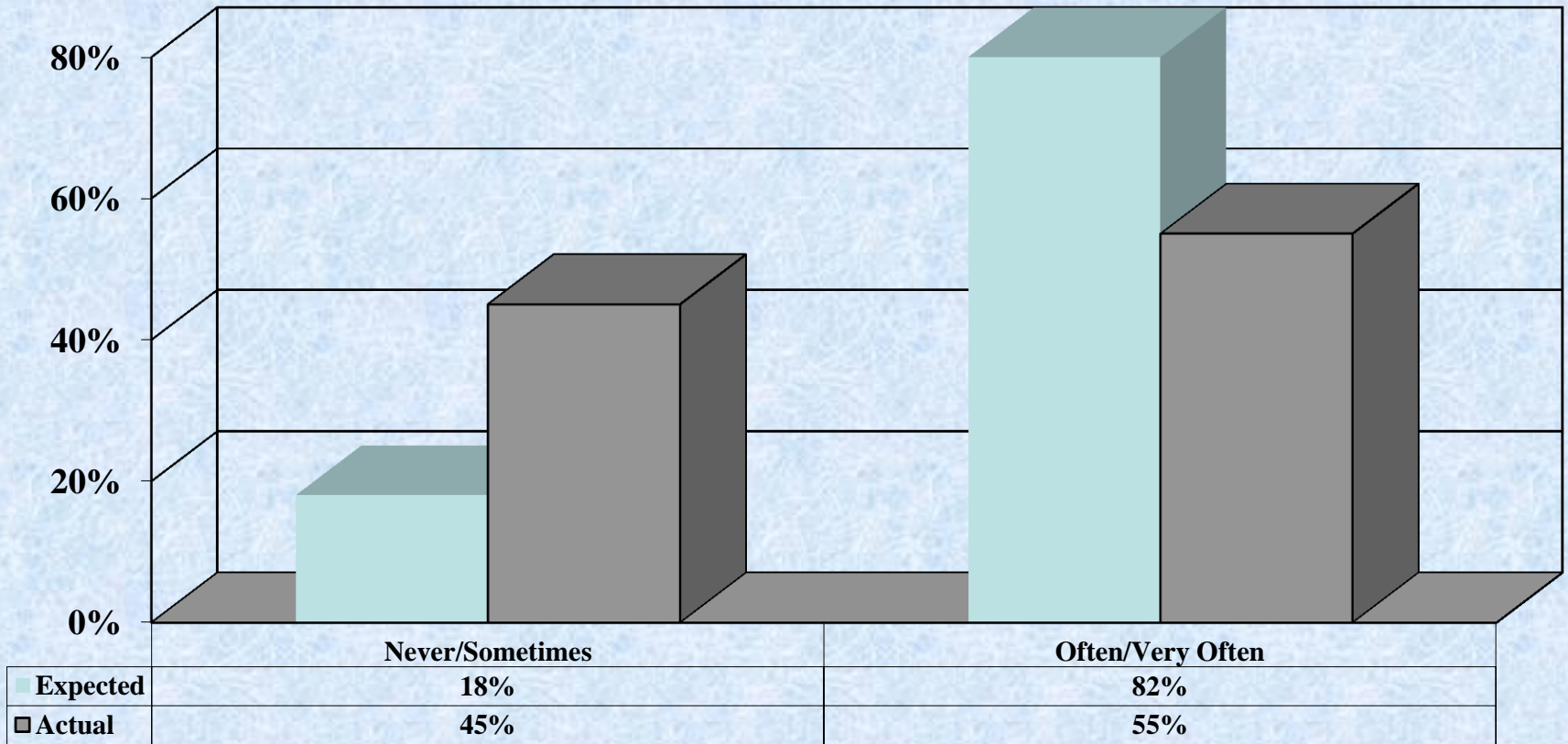
# BCSSE/NSSE Combined Report



**Student talked about college or career plans with a counselor, teacher, or other staff member.**



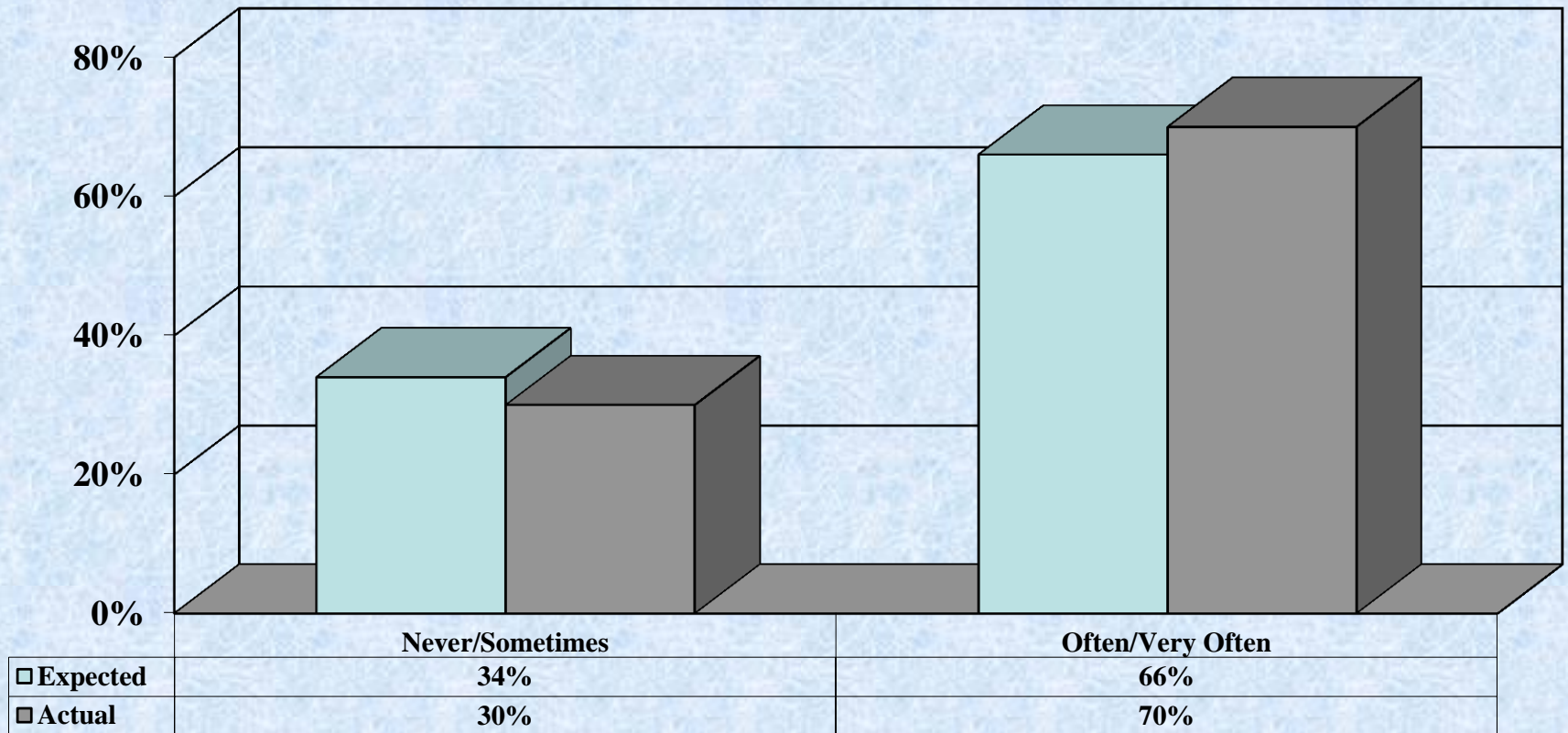
# BCSSE/NSSE Combined Report



**Students put together ideas or concepts from different courses when completing assignments or during class discussions.**



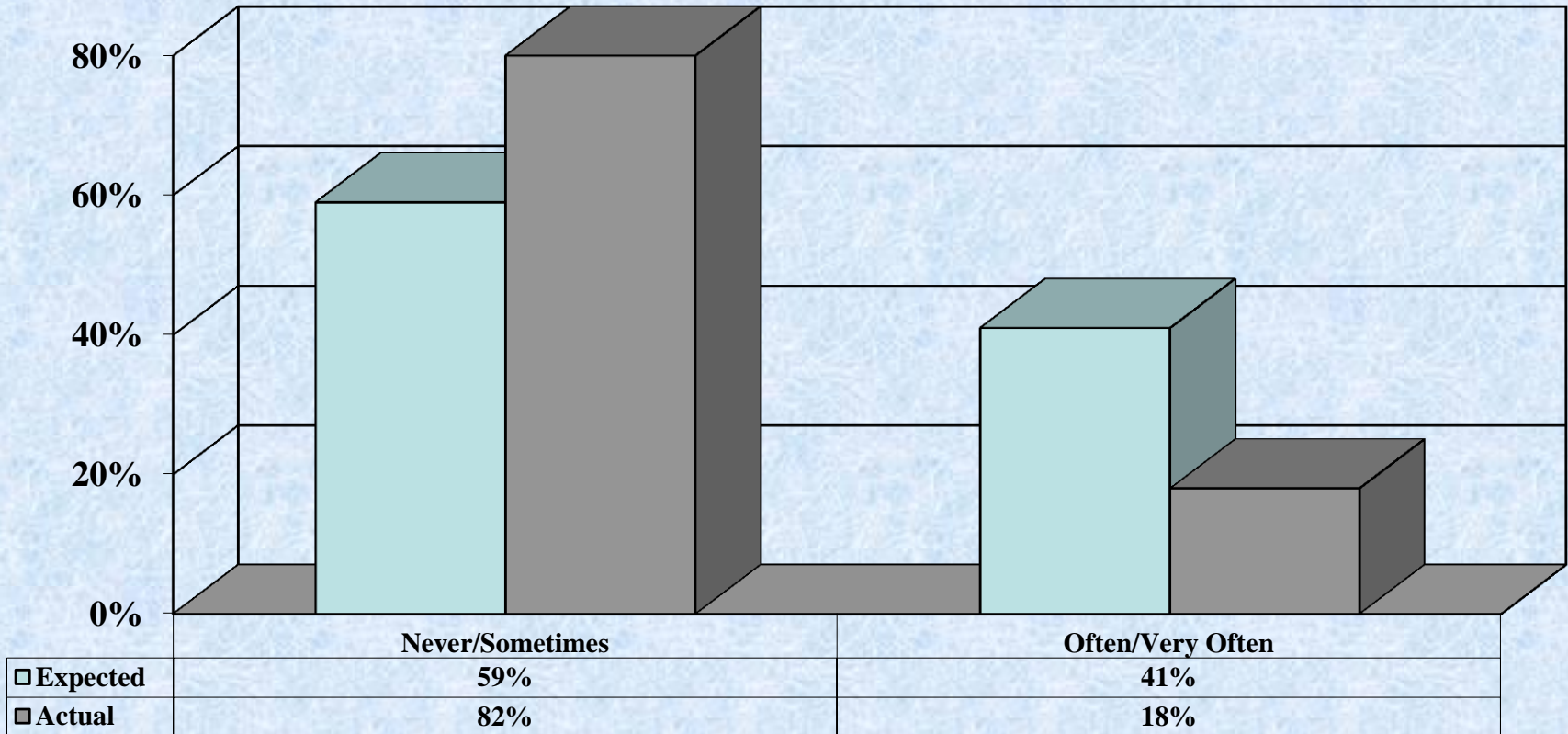
# BCSSE/NSSE Combined Report



**Student received prompt feedback from faculty on academic performance (written or oral)**



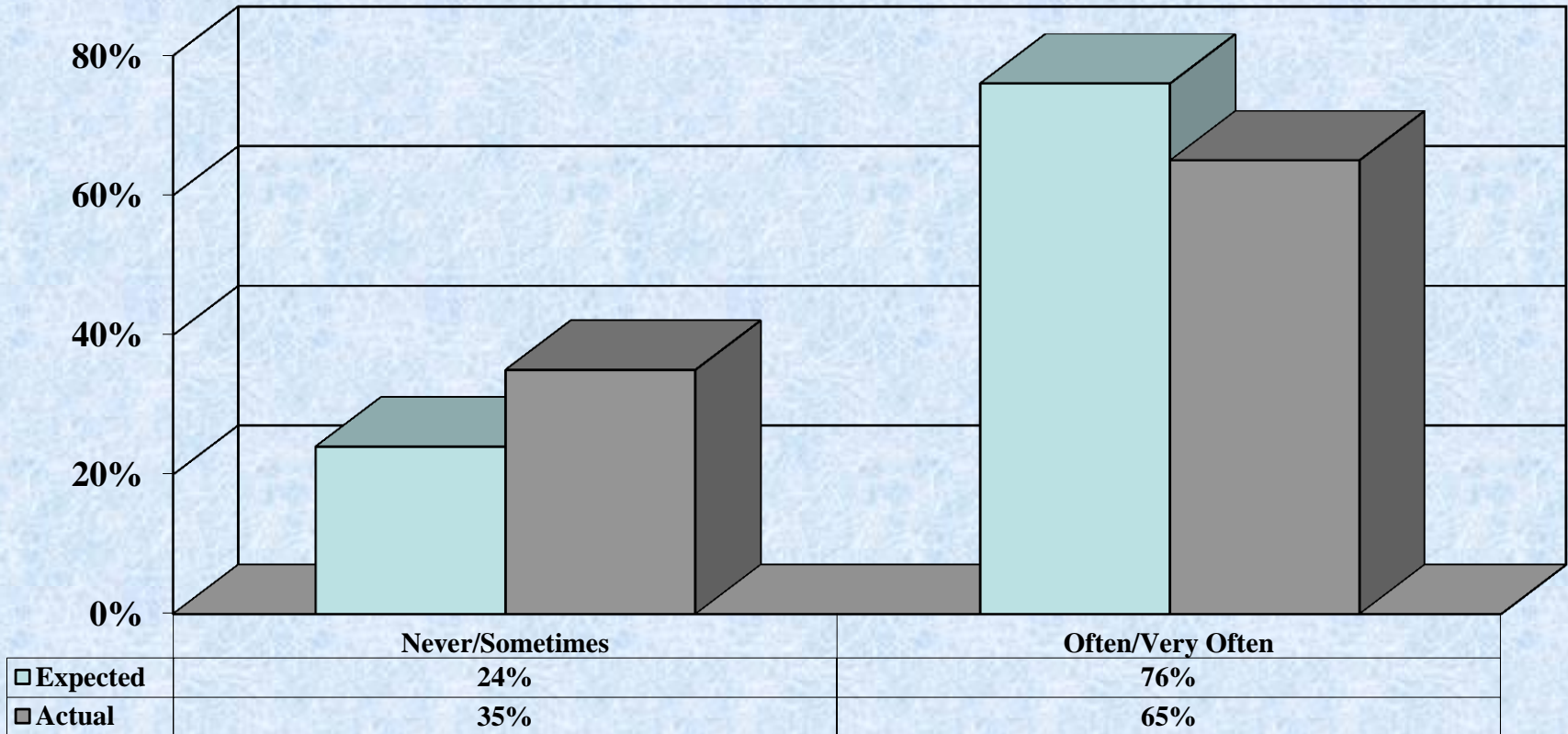
# BCSSE/NSSE Combined Report



**Student worked with faculty on other activities than coursework (committees, orientation, student life activities, etc.)**



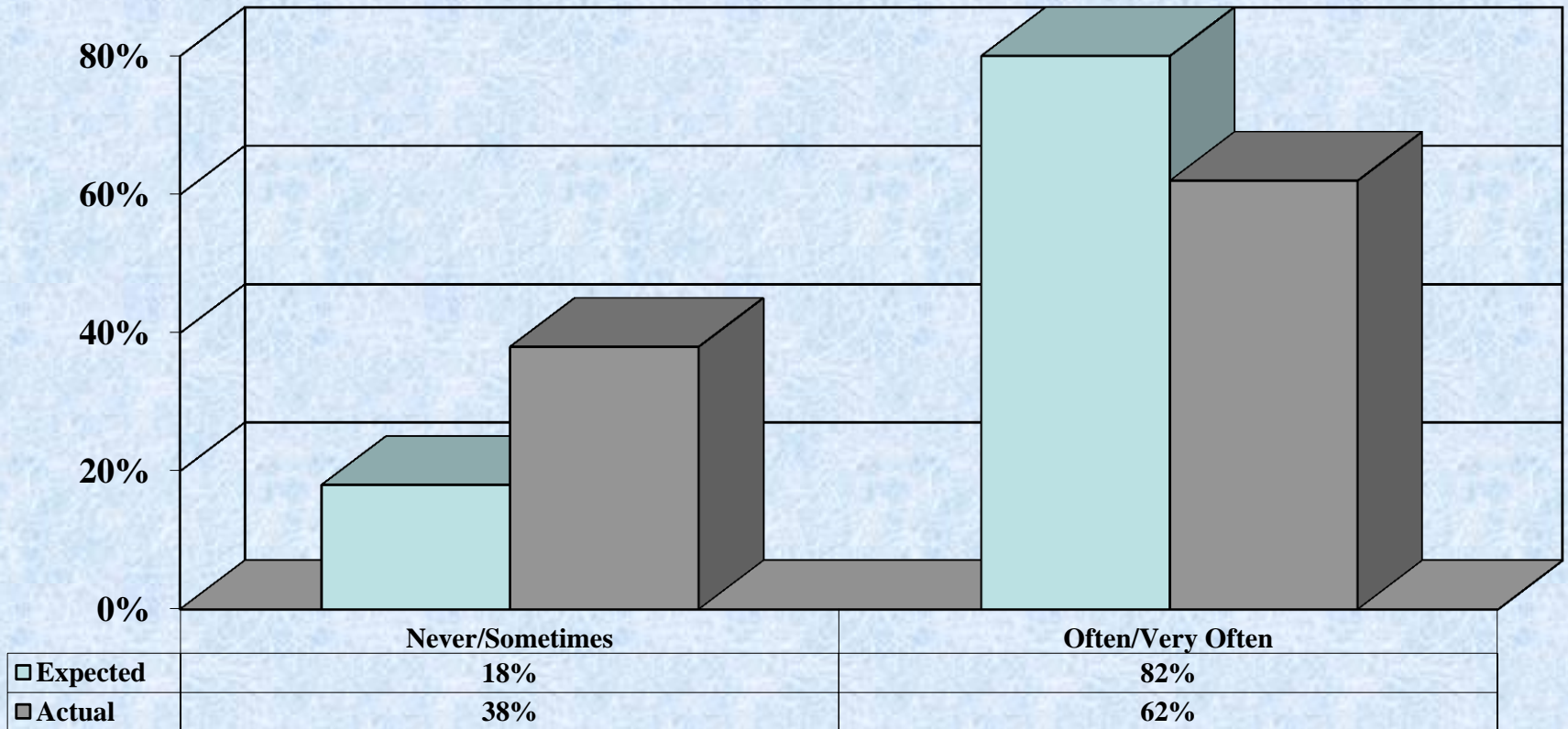
# BCSSE/NSSE Combined Report



**Student tried to better understand someone else's views by imagining how an issue looks from the other person's perspective**



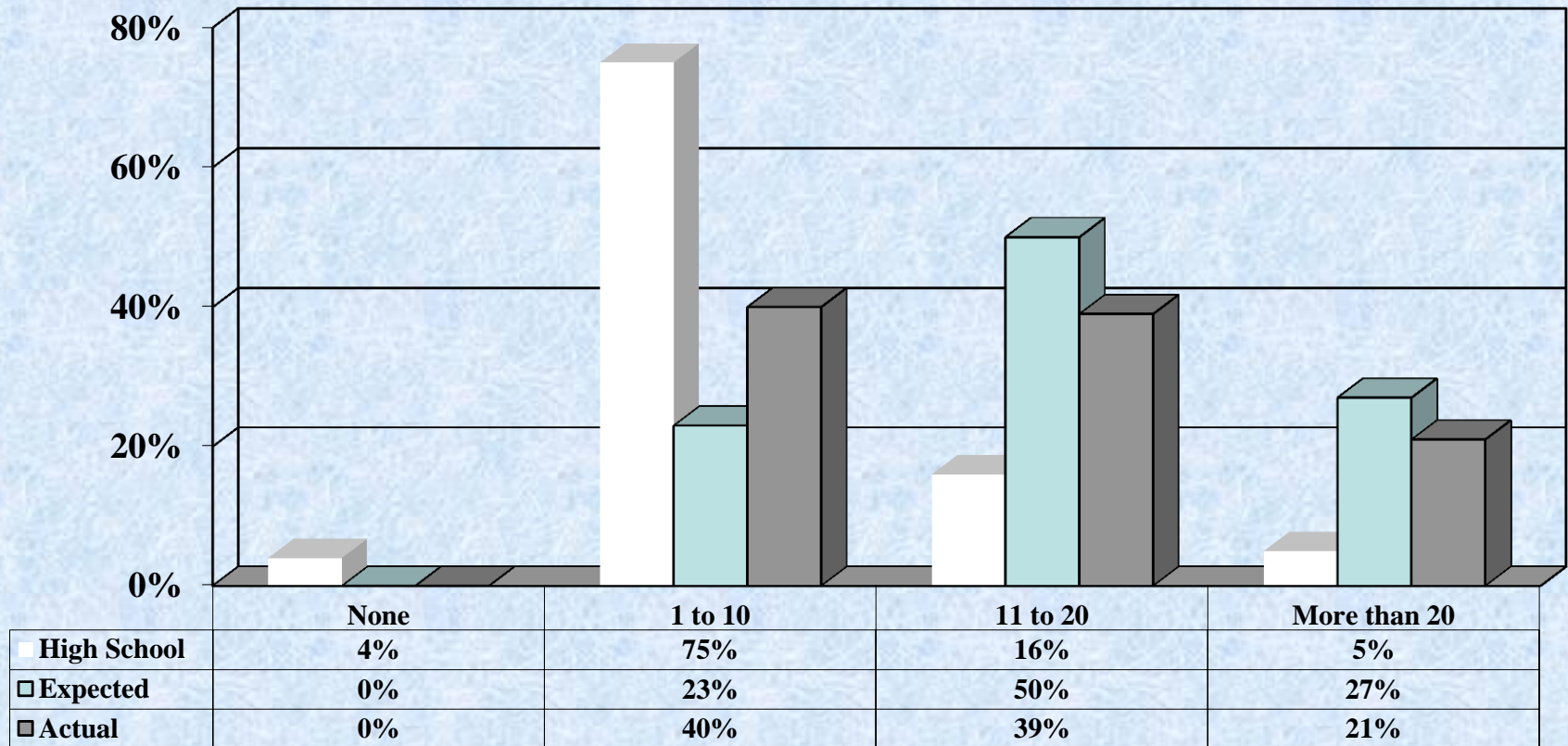
# BCSSE/NSSE Combined Report



**Student learned something that changed the way they understood an issue or concept**



# BCSSE/NSSE Combined Report

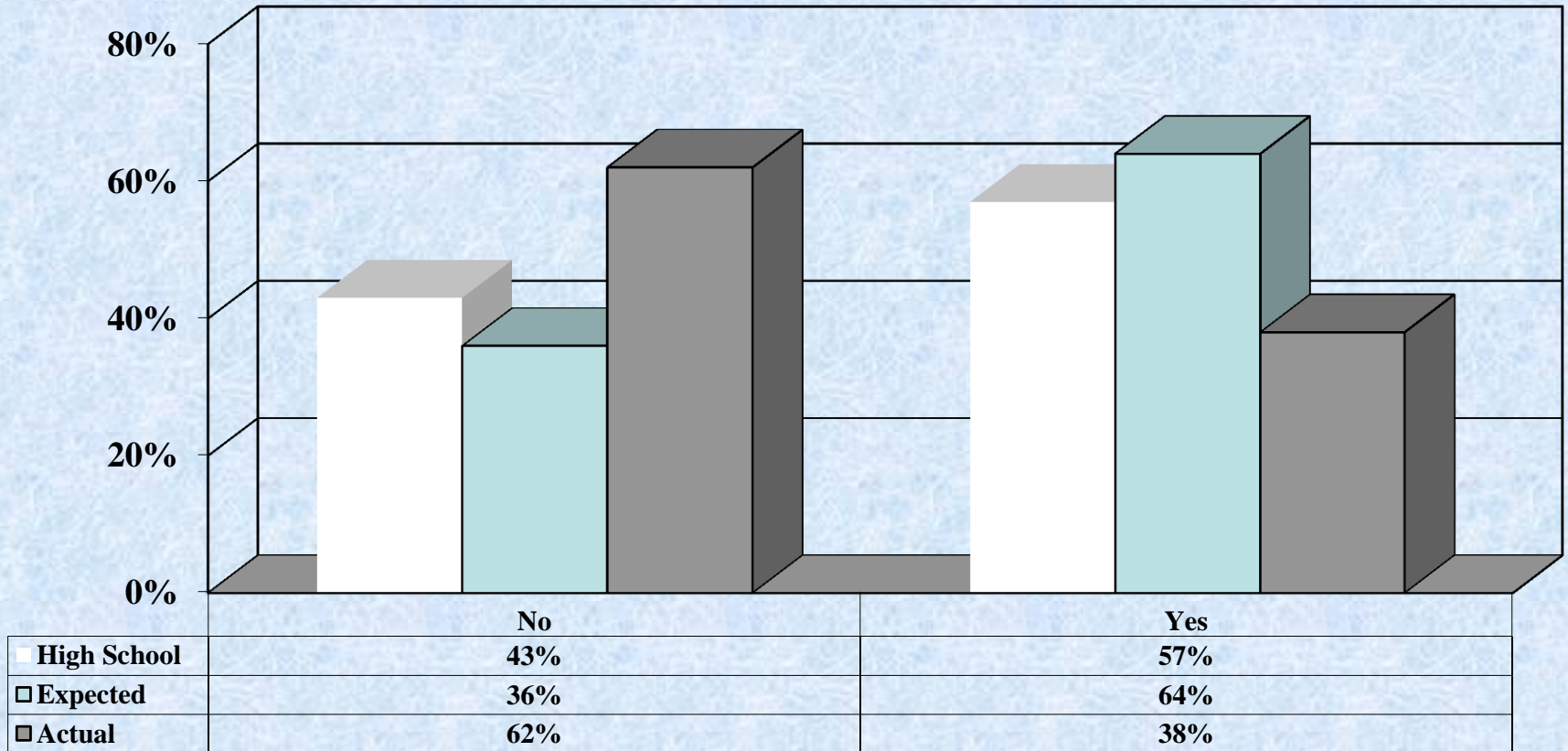


Hours per week preparing for class (studying, doing homework, rehearsing, etc.)





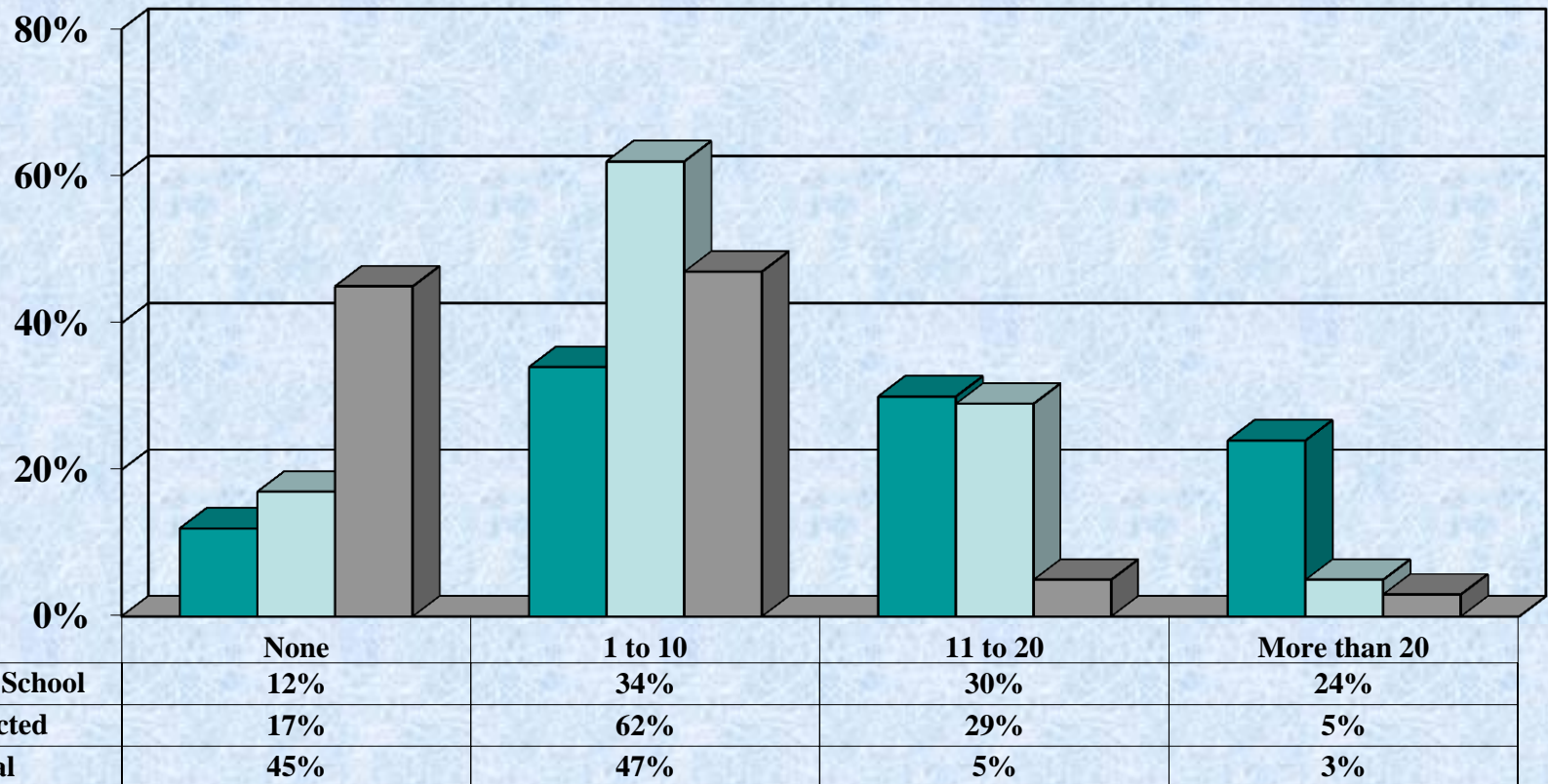
# BCSSE/NSSE Combined Report



**Work for Pay**



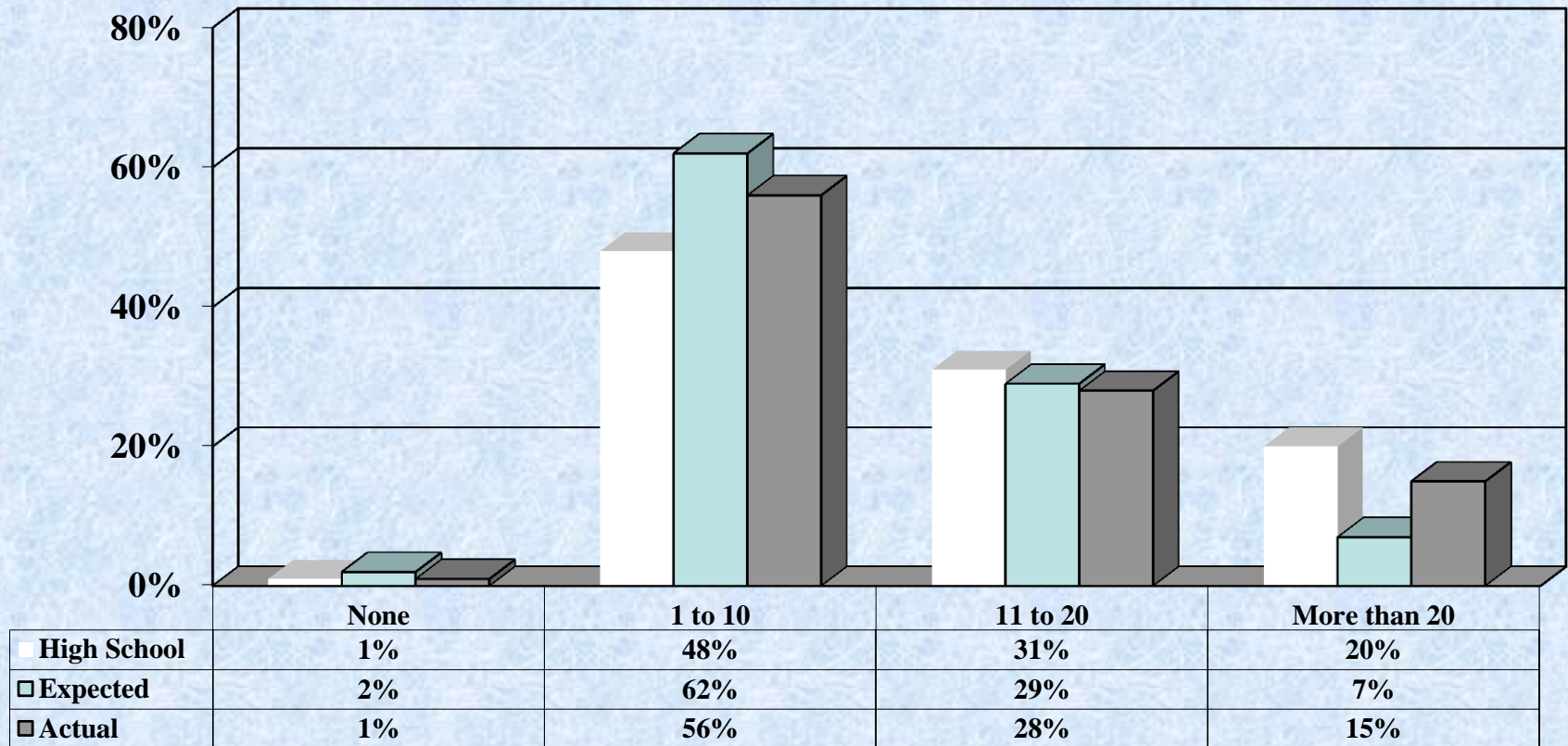
# BCSSE/NSSE Combined Report



Hours per week participating in co-curricular activities (arts, clubs, athletics)



# BCSSE/NSSE Combined Report



**Hours per week relaxing and socializing (watching TV, partying, etc.)**



**Comprehensive BCSSE and NSSE survey results can be found at:**

**<http://pie.tamucc.edu>**

**Select 'Survey Results' to access reports.**

**For more information, please contact  
Katharine Mason, Research Analyst,  
at (361) 825-2242**