

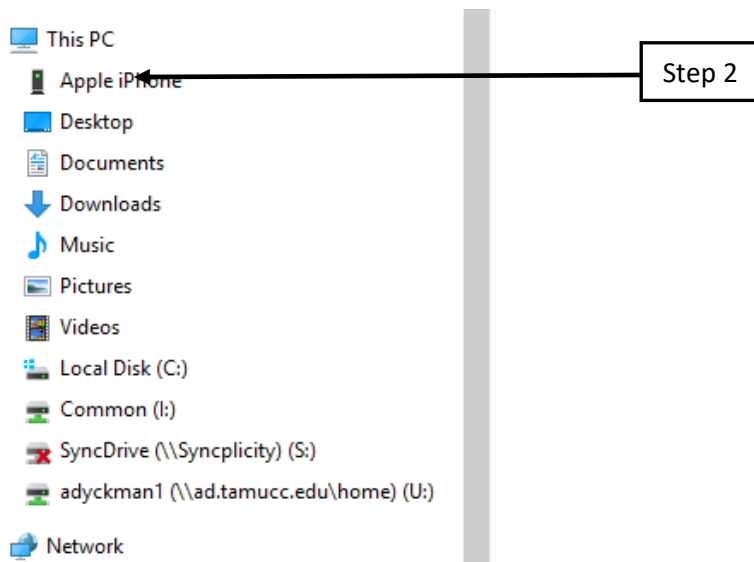
Mapping a Network Drive - Windows 10

The following steps will walk you through how to access the network drive or i:drive. If you are attempting to access the i:drive from off campus you will need to connect to the campus network using VPN first.

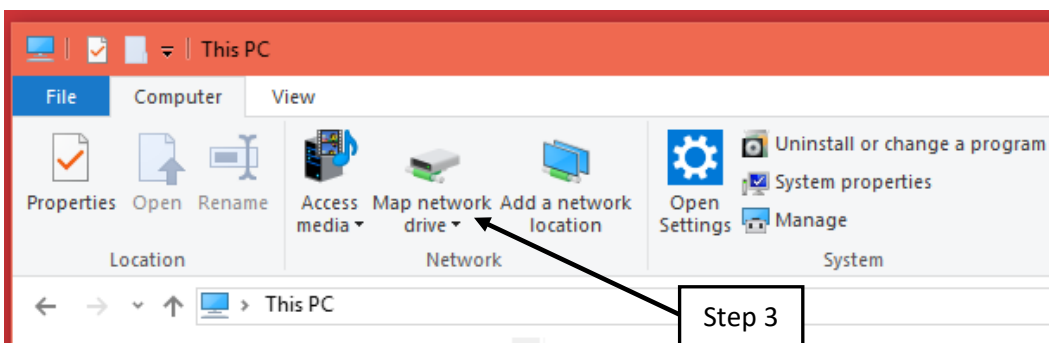
1. Left-click the **File Explorer** icon on your task bar.



2. Left-click **This PC**



3. Left-click **Map network drive**

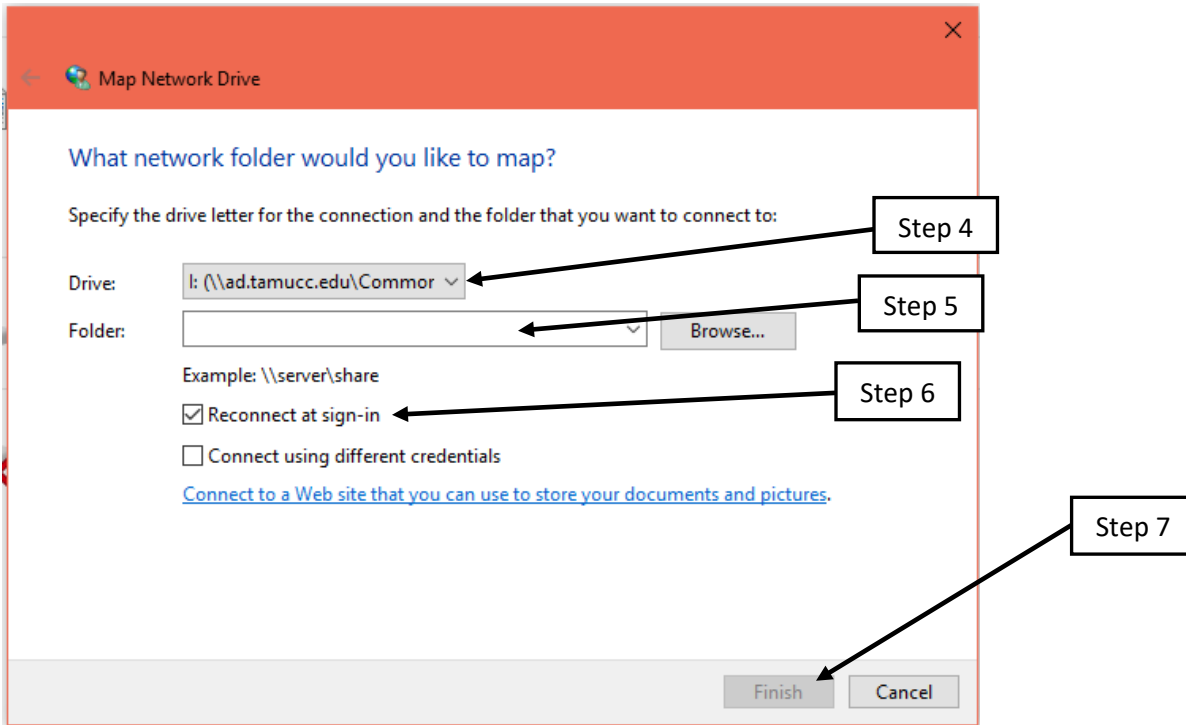


4. At the Drive dropdown Menu Select I:

Last Updated 10/27/2017

Mapping a Network Drive - Windows 10

- In the Folder: field Type [\\ad.tamucc.edu\Common](#)
- We suggest that you uncheck **Reconnect at logon** if you are connecting from off campus.



- Left-click **Finish**.

NOTE: If you are prompted for your credentials you will need to input your IslandID and password. Furthermore, you may need to put TAMUCC\ preceding your IslandID if you are using a non-university computer.