

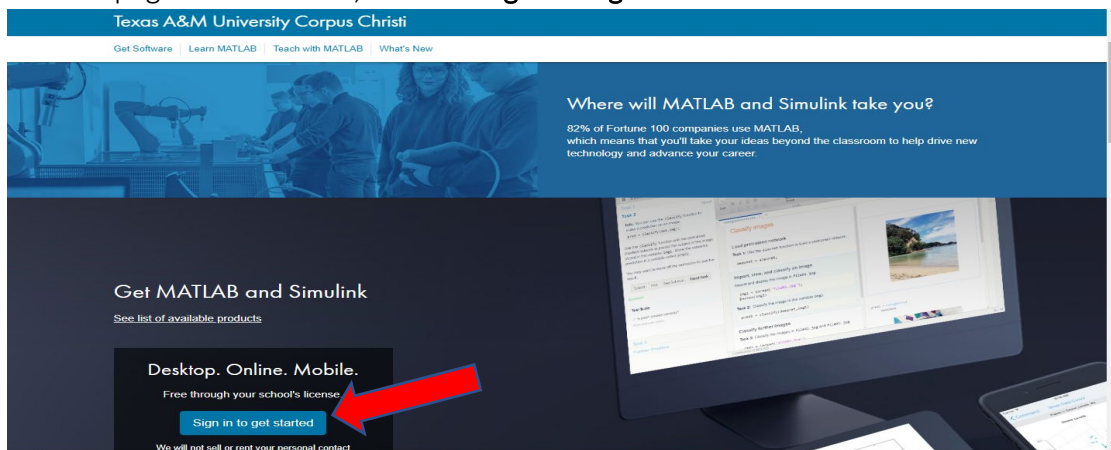
# Installing MATLAB on Apple Computers (Personal or University)

Current students, faculty, and staff are covered by the campus-wide license which now allows them to software on their personal Windows, Mac, or Linux computers.

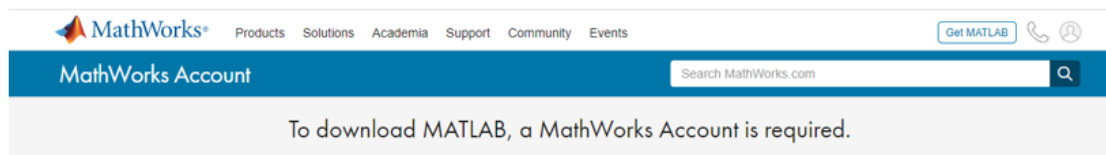
- Please note that installing the full software suite requires **31GB** of free space
- Start using MATLAB Online from a web browser
- Access software training under “Self-Paced Courses

Instructions for downloading and activating software on your personal or University Apple computer.

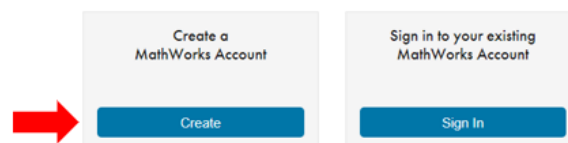
1. In your web browser address bar, go to <https://www.mathworks.com/academia/tah-portal/texas-am-university-corpus-christi-31462192.html>
2. On the page shown below, click the **Sign in to get started** button



3. Under **Create a MathWorks Account**, click the **Create** button



MathWorks is pleased to provide a special license to you as a member of Texas A&M University-Corpus Christi. This license is intended to be used only for academic/course work and not for commercial purposes.



#### 4. Fill out fields and click **Next**

To finish creating your profile, provide the following information:

We recommend using a **password different from your university account.**

|                                  |  |
|----------------------------------|--|
| <b>Email Address</b>             | <input type="text" value="richard.longoria@tamucc.edu"/>             |
| <b>First Name</b>                | <input type="text" value="Richard"/>                                 |
| <b>Last Name</b>                 | <input type="text" value="Longoria"/>                                |
| <b>Password</b>                  | <input type="password"/>   |
| <b>Password Confirmation</b>     | <input type="password"/>   |
| <b>Location</b>                  | <input type="text" value="Select one..."/>                           |
| <b>Department</b>                | <input type="text" value="Select one..."/>                           |
| <b>What describes your role?</b> | <input type="text" value="Select one..."/>                           |
| <b>School / University</b>       | <input type="text" value="Texas A&amp;M University-Corpus Christi"/> |

I accept the [Online Services Agreement](#)

We will not sell or rent your personal contact information.  
See our [privacy policy](#) for details.

#### 5. Click the **R2019b** button to download

The screenshot shows the MathWorks Downloads page. At the top, there is a navigation bar with the MathWorks logo, a 'Get MATLAB' button, and a user profile icon. Below the navigation bar, the page title is 'Downloads'. There are links for 'Licensed Downloads FAQ', 'Trials FAQ', and 'Download & Install Troubleshooting'. A 'Contact support' link is also present. The main content area is titled 'Download R2019b' and features a large blue button with a download icon and the text 'R2019b'. To the right of this button is a section titled 'Download earlier release' with a list of previous releases: R2019a, R2018b, R2018a, R2017b, and R2017a. At the bottom left, there are links for 'R2019b', 'Released: 2019-09-11', 'System Requirements', and 'Release Highlights'.

6. Click appropriate operating system and wait for the download to complete

Download R2019b (includes R2019b Update 3)

**Download and run the Installer**

- When prompted, sign in as `jpuumala@islander.tamucc.edu`
- Select your license
- Choose the products, toolboxes, and blocksets that you want to install

Windows  
macOS  
Linux

**Related Links**

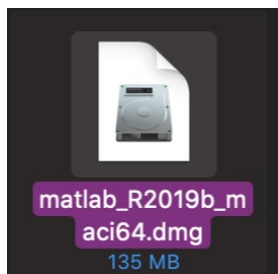
[R2019b System Requirements](#)  
[View instructions for running the installer](#)

**Need Help?**

- **How do I install the toolboxes and blocksets that I just added to my license?**  
Run the installer and follow the steps to download your license and new products.

7. Double click the download so that will open the installation file. See *Img. 1*, then double-click the **InstallForMacOSX** icon, see *Img. 2*

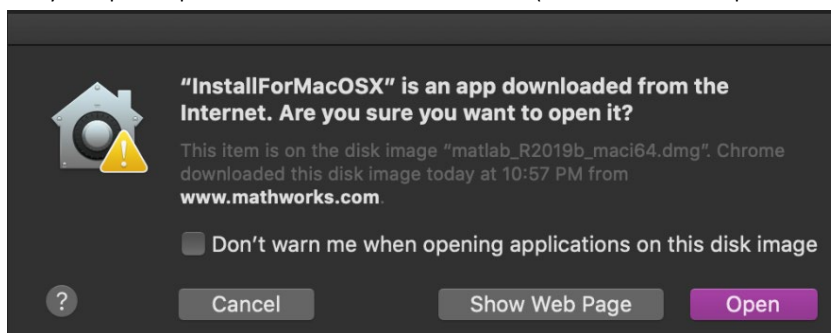
*Img.1*



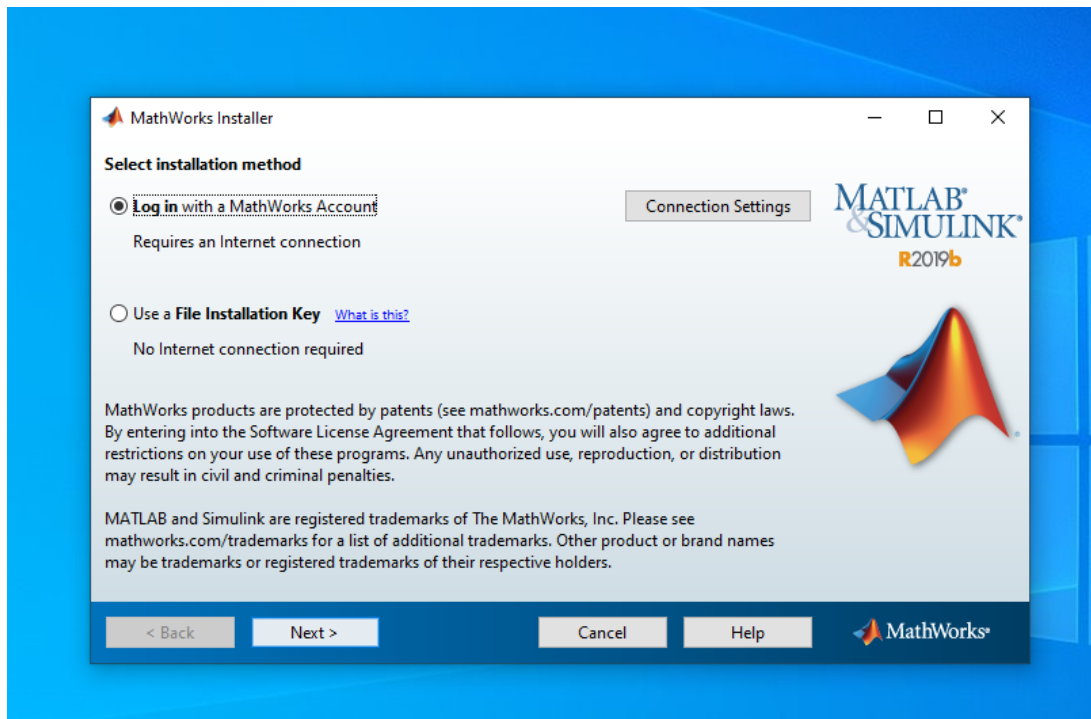
*Img. 2*



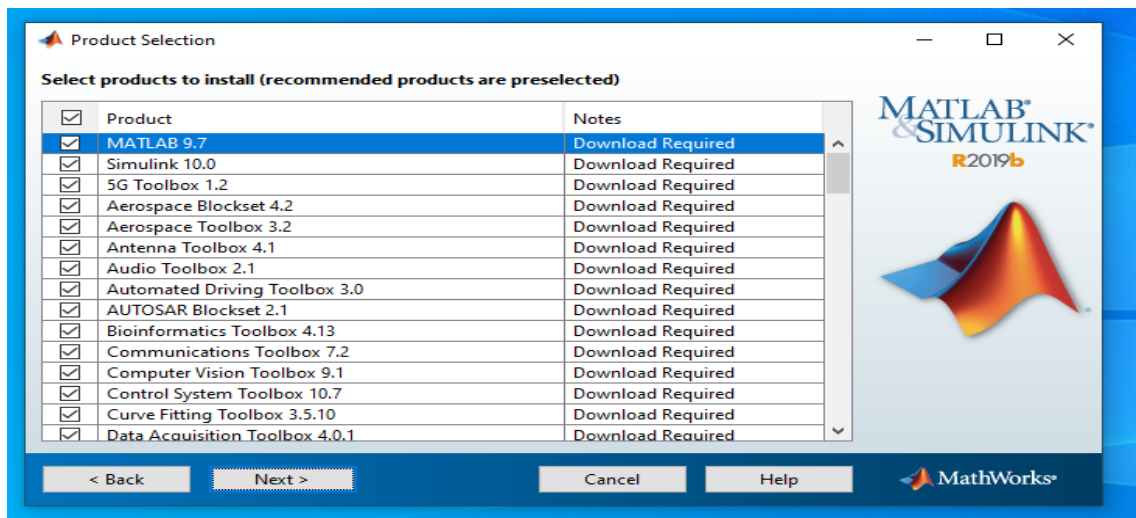
8. Click **Open** and accept the permission to make changes to your computer. **NOTE:** You may be prompted for **Owner** credentials (username and password) to proceed



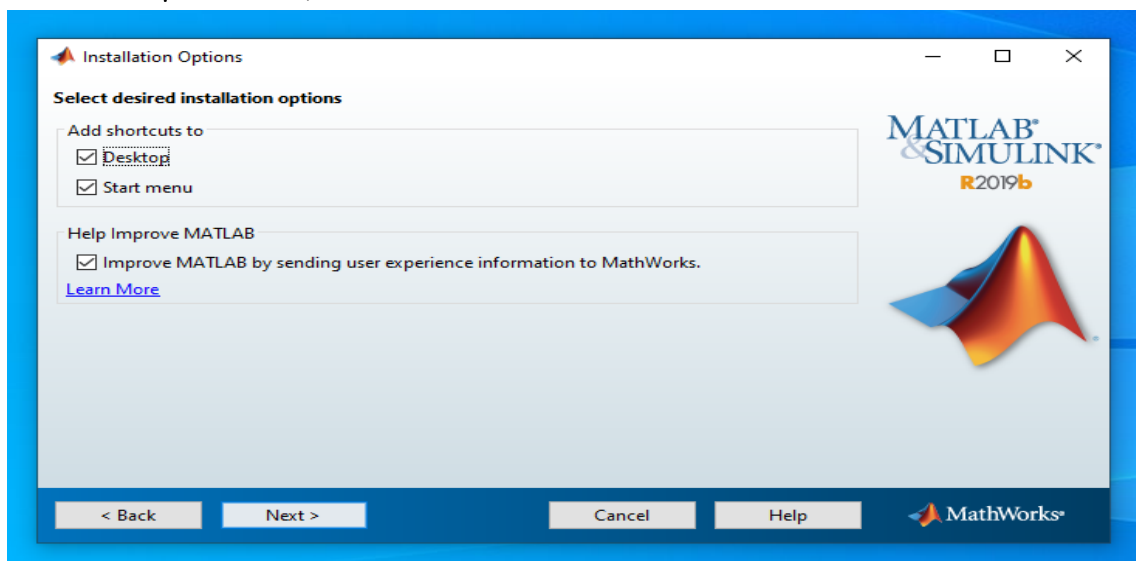
9. Select **Log in with a MathWorks Account**, then *click Next*



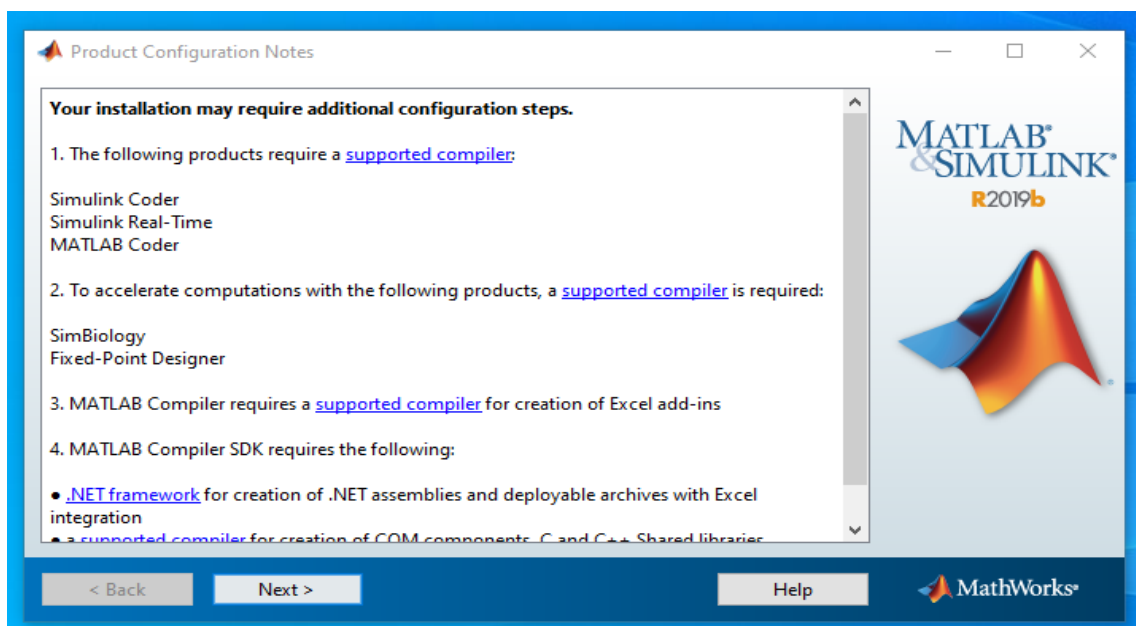
10. *Click Next* and **Next** until you reach the page below, then check all boxes. After checking all boxes, *click Next*



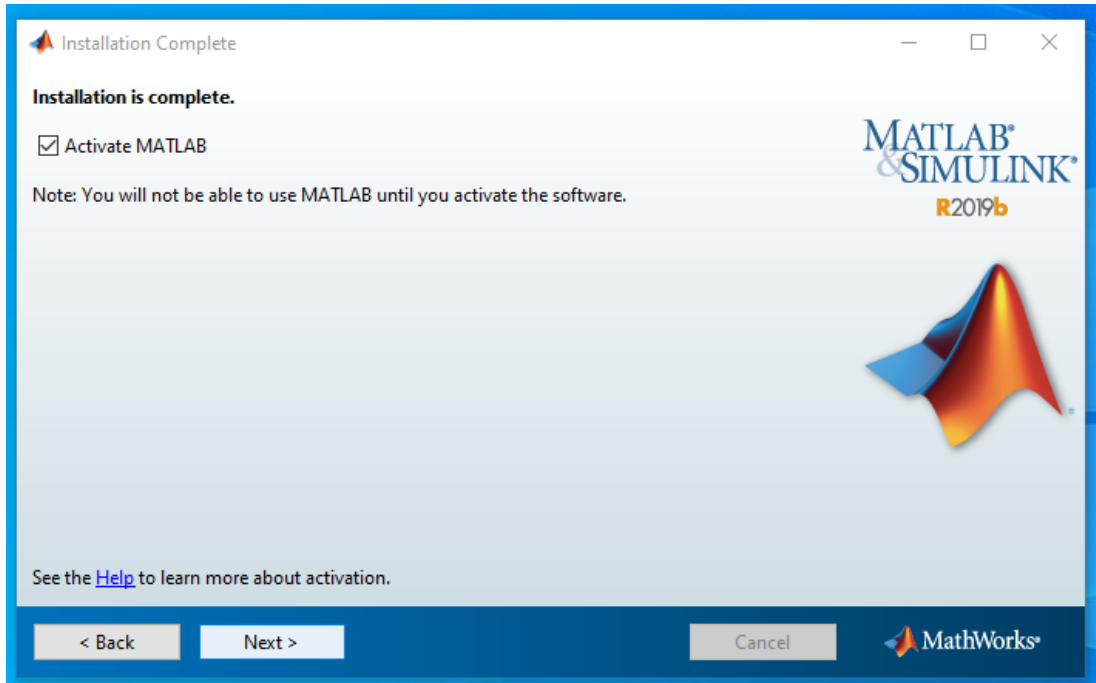
11. Click Desktop checkbox, then click Next



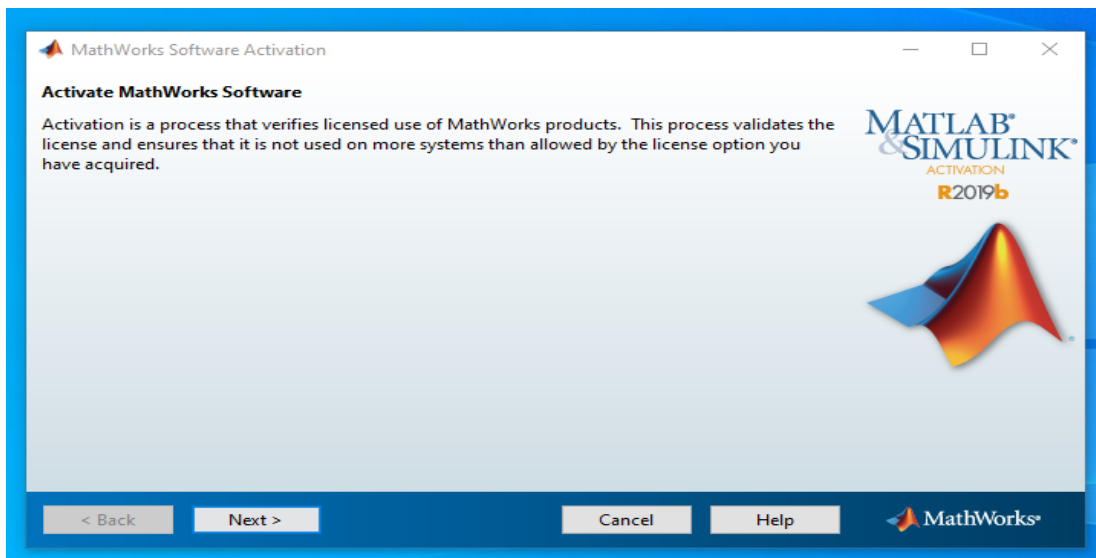
12. Click Next



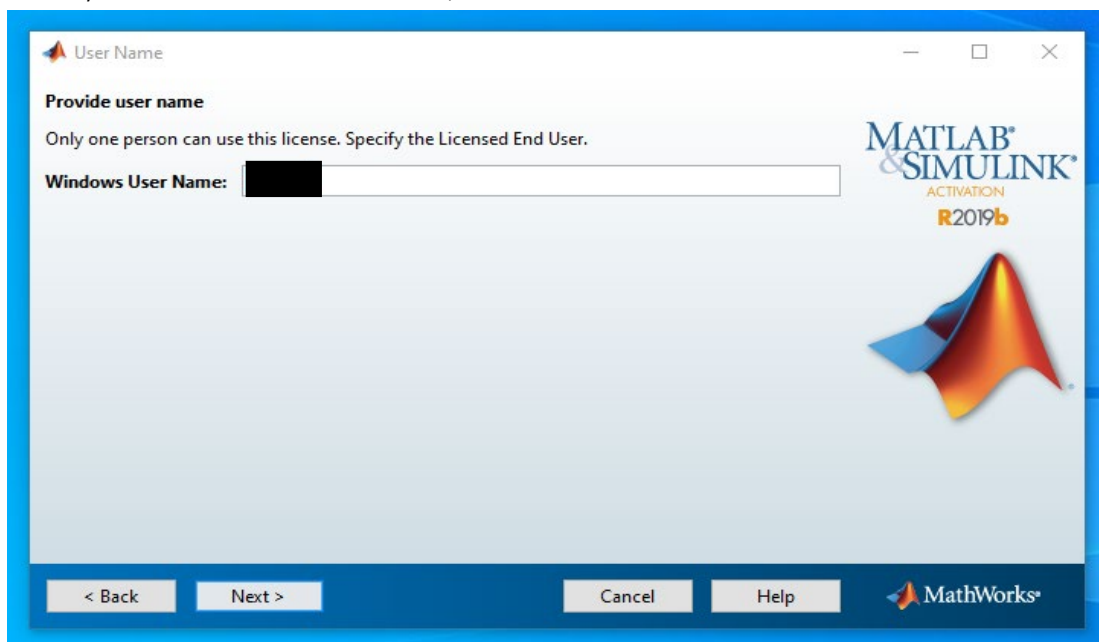
13. Click **Activate MATLAB** checkbox, then *click Next*



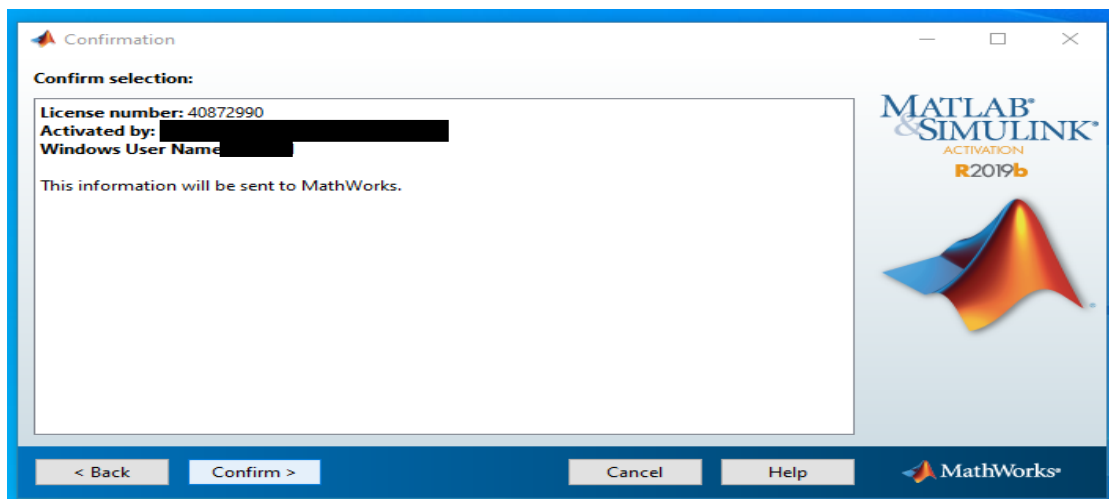
14. Click **Next**



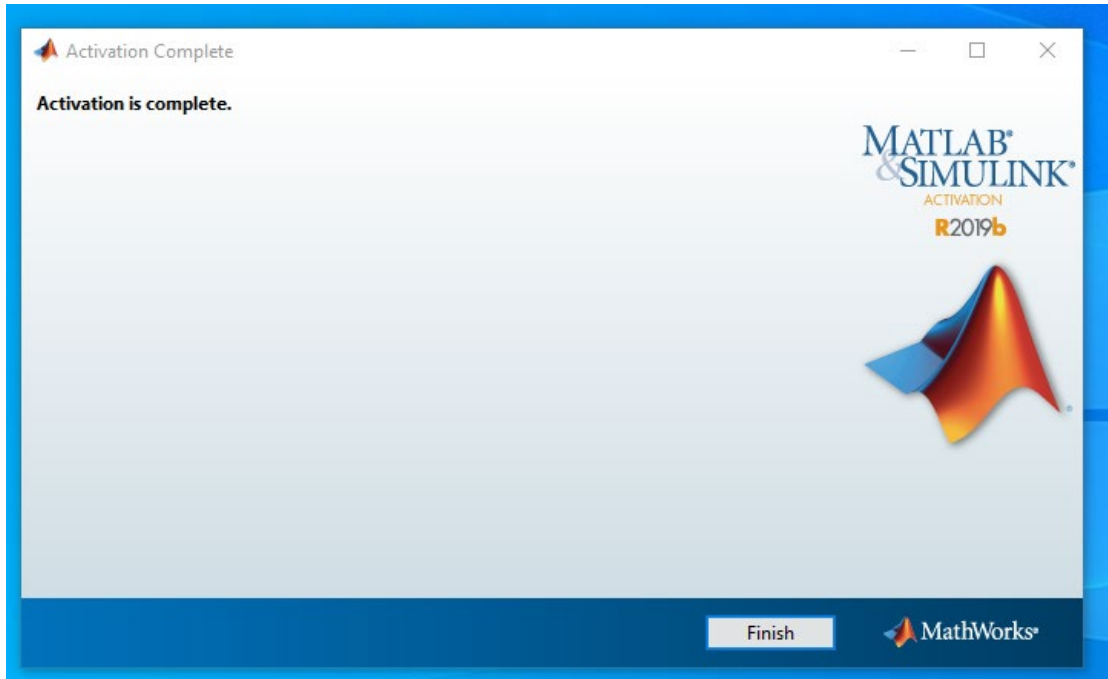
15. Enter your TAMUCC email address, then Click Next



16. Click Confirm



17. Click Finish



18. Your MATLAB console will appear

