

100% CONSTRUCTION DOCUMENTS - NOVEMBER 15, 2023

6300 OCEAN DR., CORPUS CHRISTI, TEXAS 78412

100% CONSTRUCTION DOCUMENTS - NOVEMBER 15, 2023

INDEX OF DRAWINGS

TURNER | RAMIREZ ARCHITECTS

.FRONT END

A0.0	COVER
A0.1	TAS 2012 EXCERPTS
A0.2	TAS 2012 EXCERPTS
A0.4	SYMBOLS AND ABBREVIATIONS
A0.6	GENERAL NOTES

NRG ENGINEERING

.ARCHITECTURAL

A2.1 FLOOR PLAN - SECOND FLOOR RESTROOM

A9.1 INTERIOR ELEVATIONS

E1.0	ELECTRICAL LIGHTING PLAN
E2.0	ELECTRICAL SPECIFICATIONS
E2.1	ELECTRICAL SCHEDULES & DETAILS

P0.1	PLUMBING SPECIFICATIONS
P1.0	PLUMBING FLOORS PLANS

CITY OF CORPUS CHRISTI
APPLICABLE CODES:

2021 INTERNATIONAL BUILDING CODE
2021 INTERNATIONAL PLUMBING CODE
2021 INTERNATIONAL MECHANICAL CODE
2021 INTERNATIONAL ENERGY CONSERVATION CODE
2021 INTERNATIONAL EXISTING BUILDING CODE
2017 NATIONAL ELECTRICAL CODE

STATE OF TEXAS
APPLICABLE CODES:

2012 ARCHITECTURAL BARRIERS TEXAS
ACCESSIBILITY STANDARDSFEDERAL CODES:

2010 AMERICANS WITH DISABILITIES ACT (ADA)

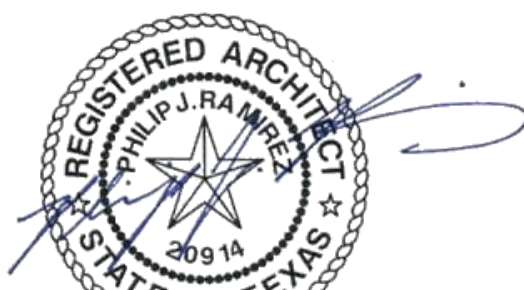
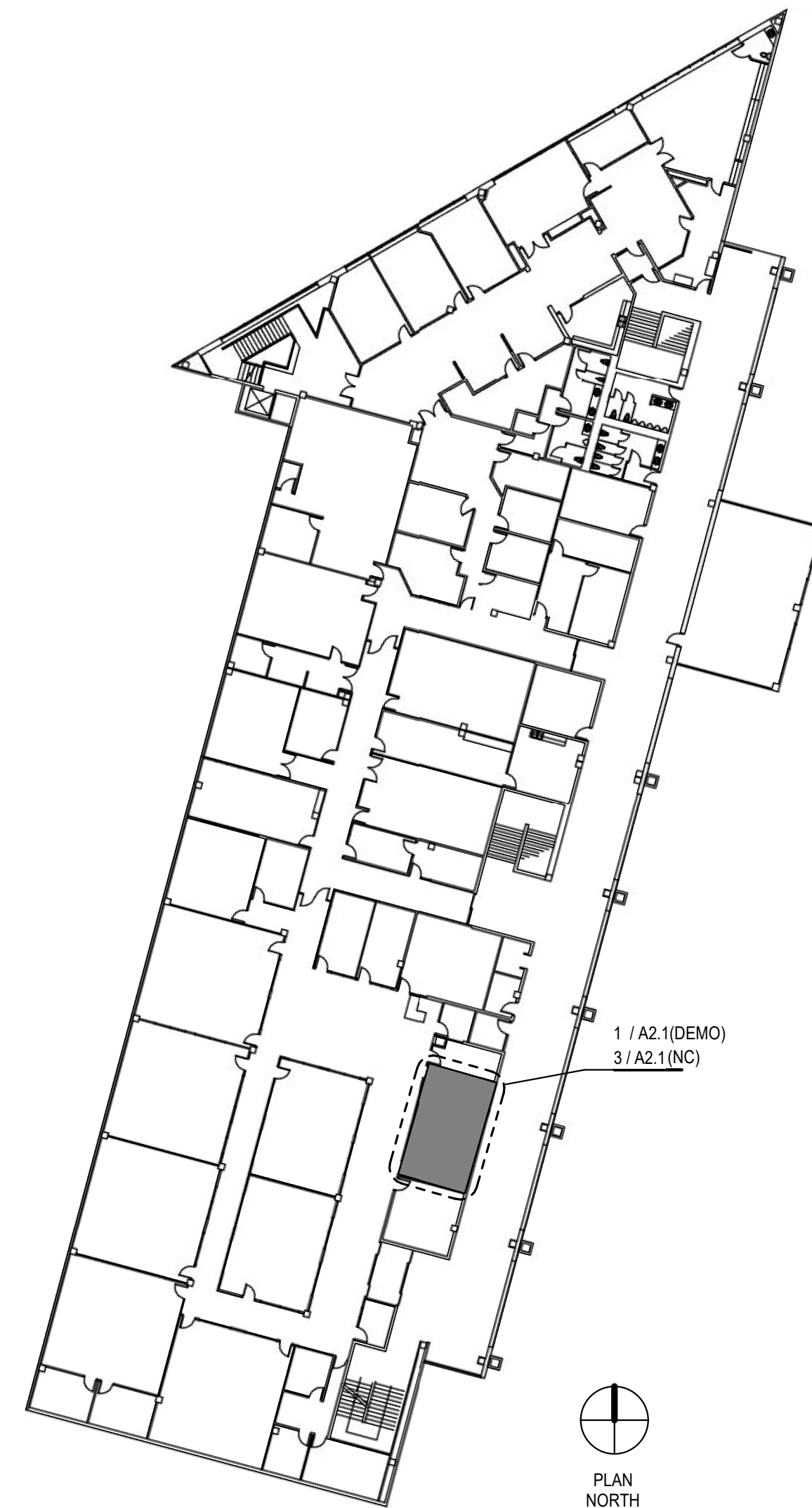
GENERAL DESCRIPTIONS:

EXISTING BUILDING TO REMAIN. INTERIOR REPAIRS AND
UPDATES TO PROVIDE ADA COMPLIANT RESTROOMS.

DEMO EXISTING 4X4 YELLOW WALL TILE COMPLETE
AT MEN'S AND WOMEN'S. REPLACE WITH NEW 4X4
DAL TILE. REFERENCE FINISH SCHEDULE FOR
LOCATIONS & SPECIFICATIONS.

DEMO EXISTING MOSAIC TILE FLOORING COMPLETE AT MENS' AND WOMEN'S. PROVIDE AND INSTALL NEW DAL TILE VOLUME 1.0. REFERENCE FINISH SCHEDULE FOR LOCATIONS AND SPECIFICATIONS.

PROVIDE AND INSTALL SOLID SURFACE COUNTER TOP AT MEN'S AND WOMEN'S (PLASTIC LAMINATE BASE BID). REFERENCE FINISH SCHEDULE FOR LOCATIONS & SPECIFICATIONS.

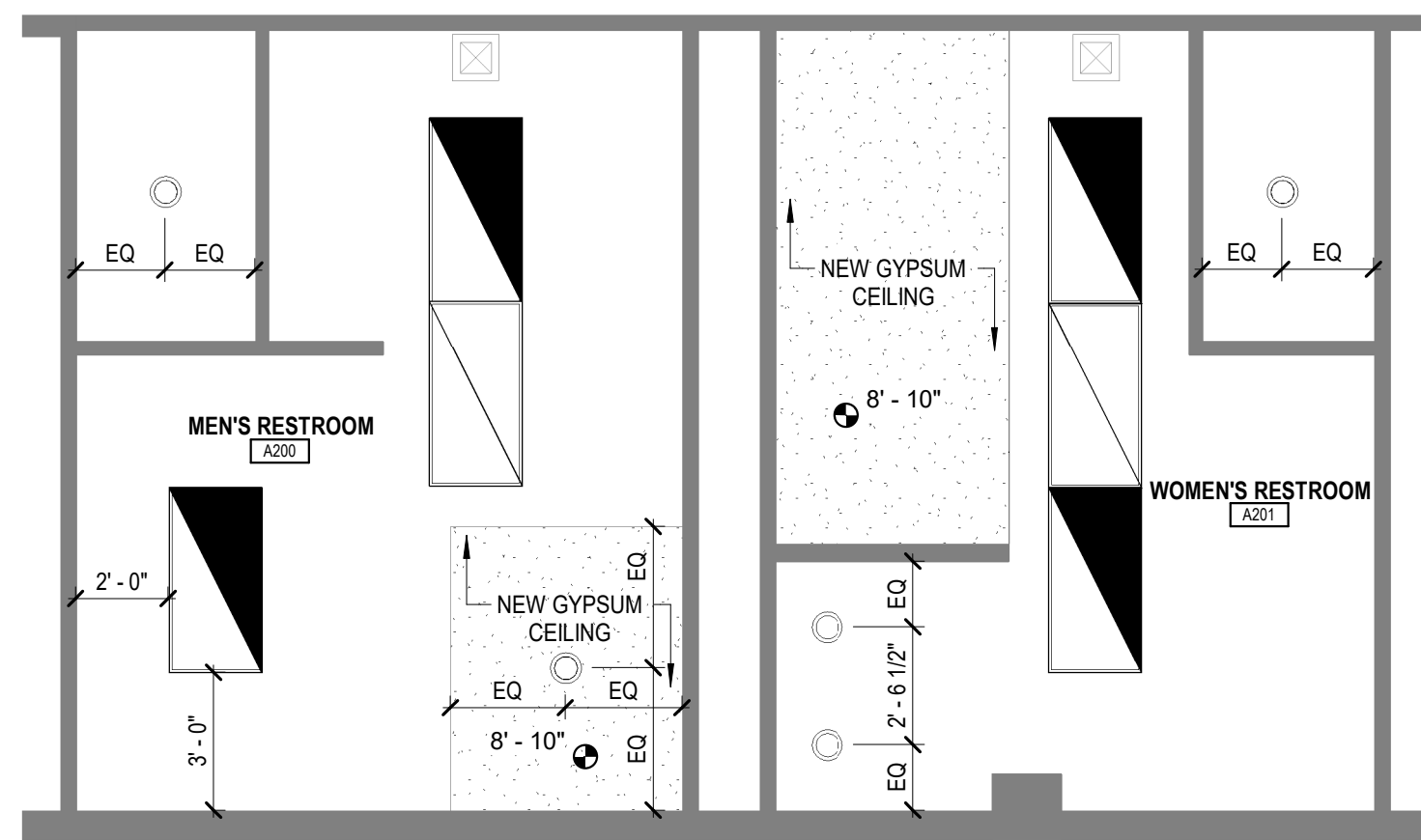


DATE: 11/15/2023

SEAL		
REV	DESCRIPTION	DATE
PROJECT ISSUE DATE:		11/15/2023
PHASE:		100% CD
DRAWN BY:		AA
CHECKED BY:		JG
PROJECT NUMBER:		2023-33
SHEET IDENTIFICATION		

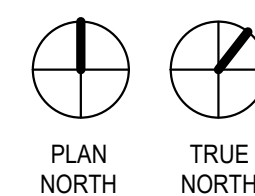
OVER

A0.0



PLAN NORTH

TRUE NORTH



*NOTE: ALTERNATE. REFER TO COVER SHEET FOR ALTERNATE SCHEDULE.

FLOORING

CT1: DALTILE VOLUME 1.0, REVERB ASH VL74, 6X6

BASE

CTB1: DALTILE VOLUME 1.0, REVERB ASH COVE BASE, P-36C9TB, 6X12 ALTERNATE

CEILINGS

GYP PAINTED GYPSUM BOARD CEILING PAINT ENTIRE CEILING TO MATCH EXISTING

PLAM1- COUNTERTOPS, WILSONART, DESIGNER WHITE D354-60
PLAM2- APRON, WILSONART, PEPPERDUSDT D327-60

SS1: WILSONART SOLID SURFACE, DESIGNER WHITE #D354SL (ALTERNATE)

MISC. MATERIALS

MATCH EXISTING FLOOR 1 EXTERIOR RESTROOMS. FLOOR-MOUNTED
OVERHEAD BRACED TOILET PARTIONS.

SCHLUTER REO-U

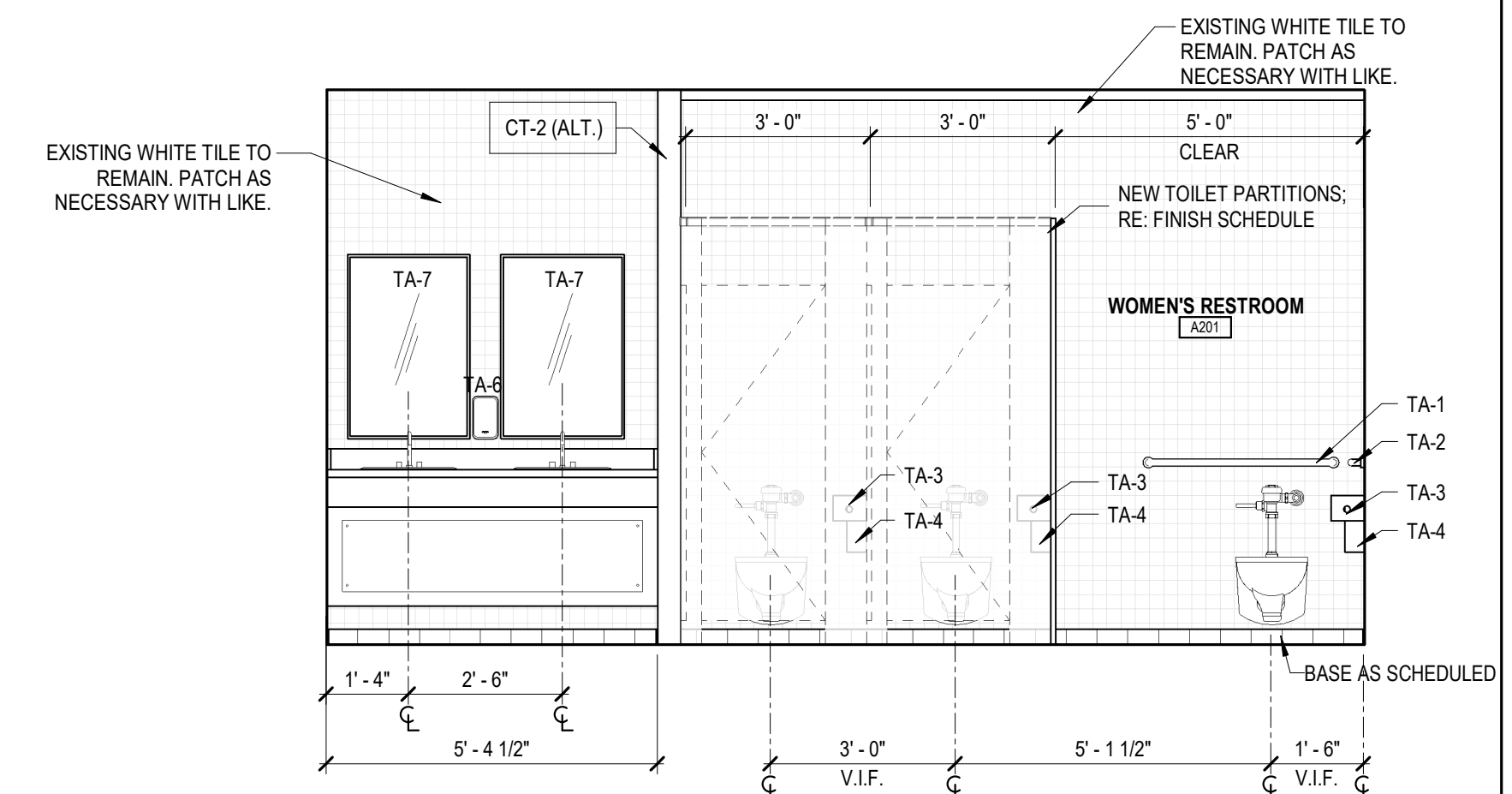
PAINT (P)

PPG PAINTS. COLOR TO BE SELECTED BY ARCHITECT.

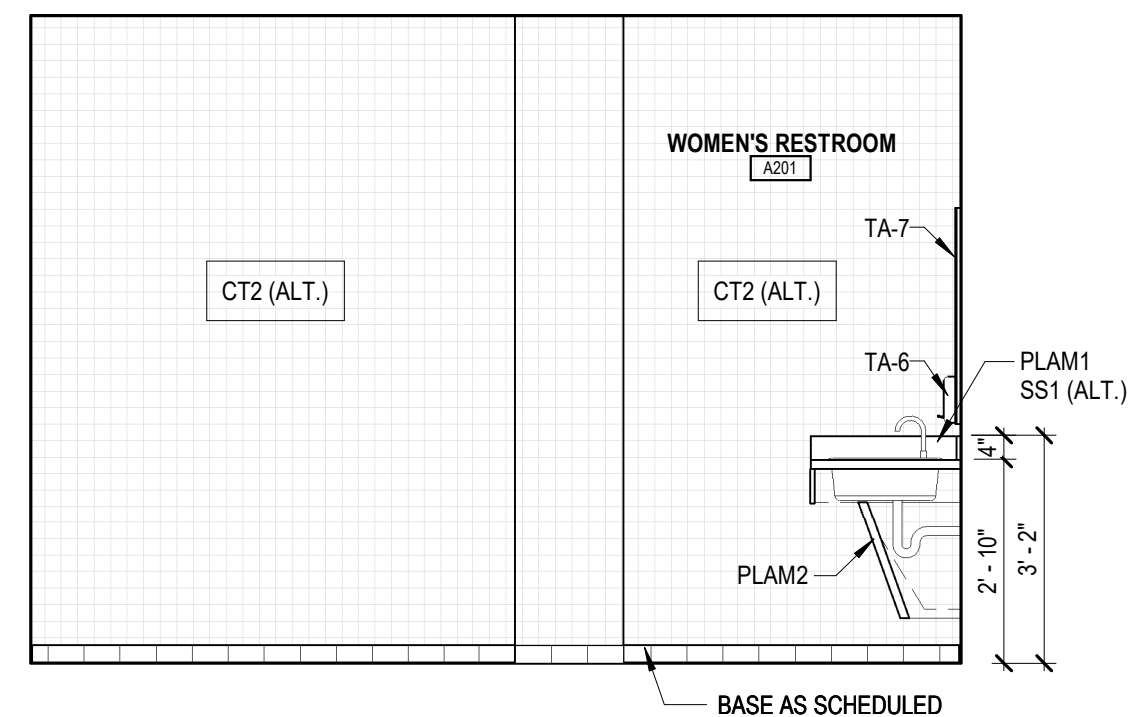
CT1: DALTILE CLASSIC, 4X4 ARCTIC WHITE 0190
BASE BID: PATCH EXISTING
ALTERNATE : AS INDICATED ON PLANS
CT2: DALTILE CLASSIC, 4X4, GARDEN SPOT 0141
ALTERNATE: AS INDICATED ON PLANS



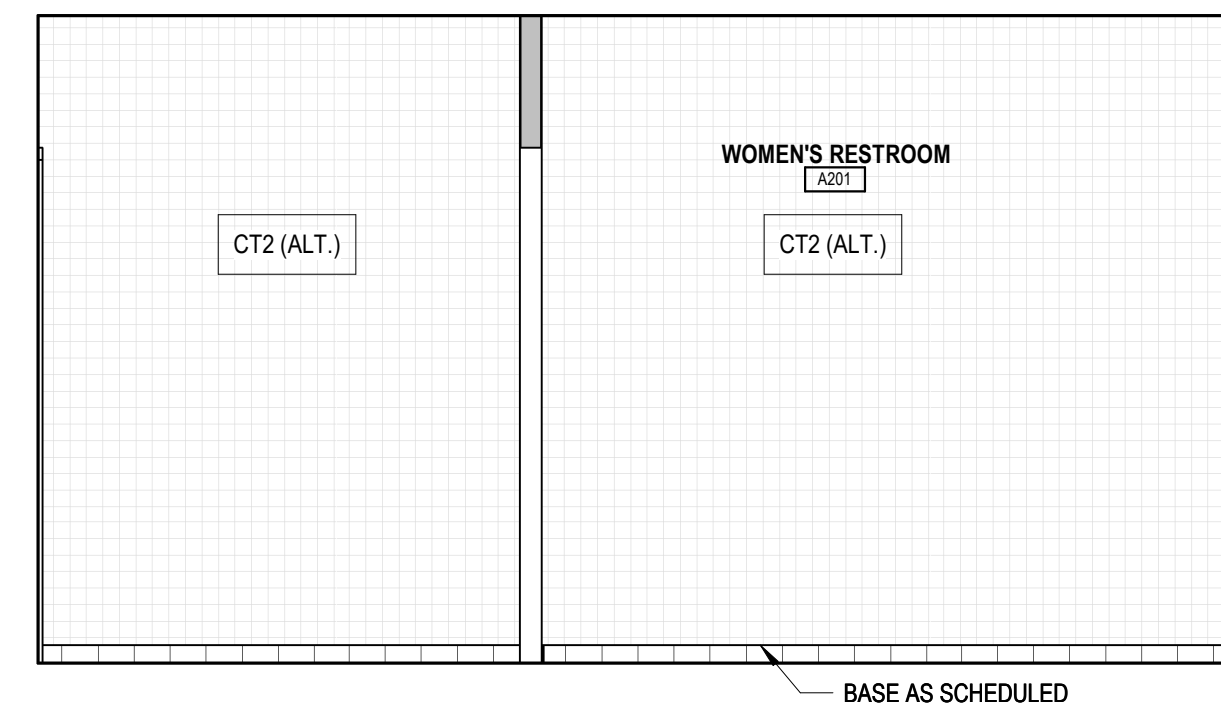
SCALE: 1/4" = 1'-0"



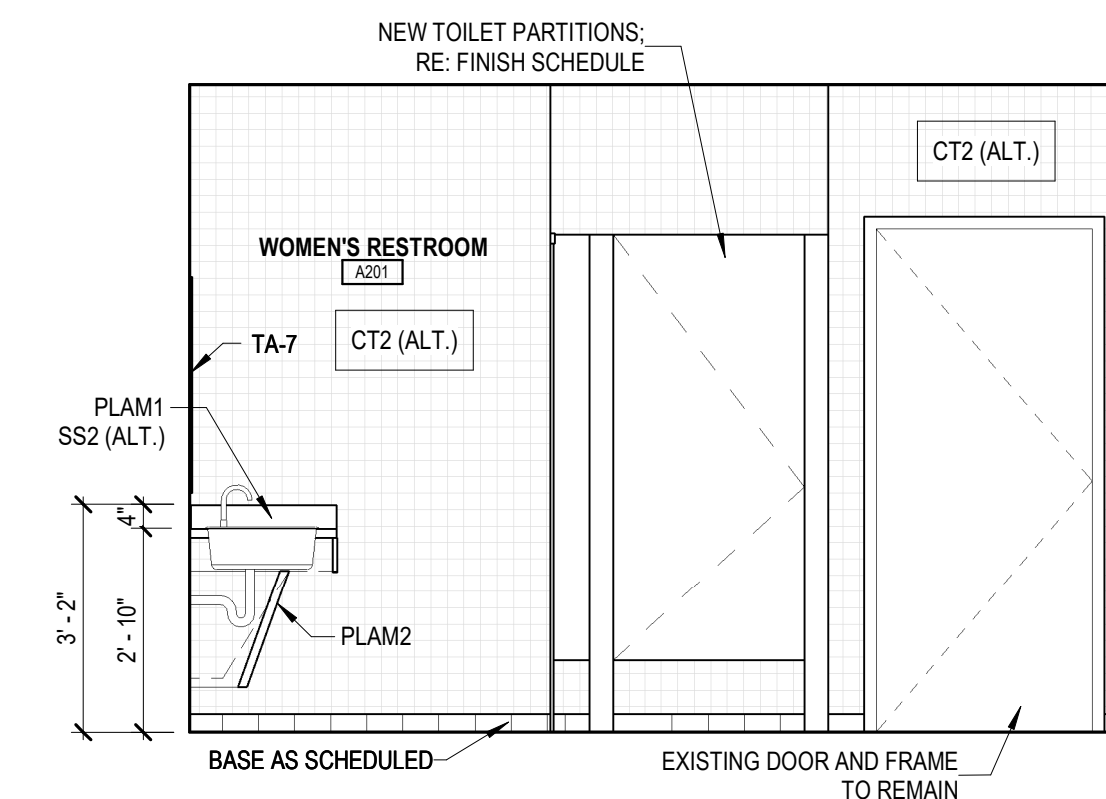
SCALE: 3/8" = 1'-0"



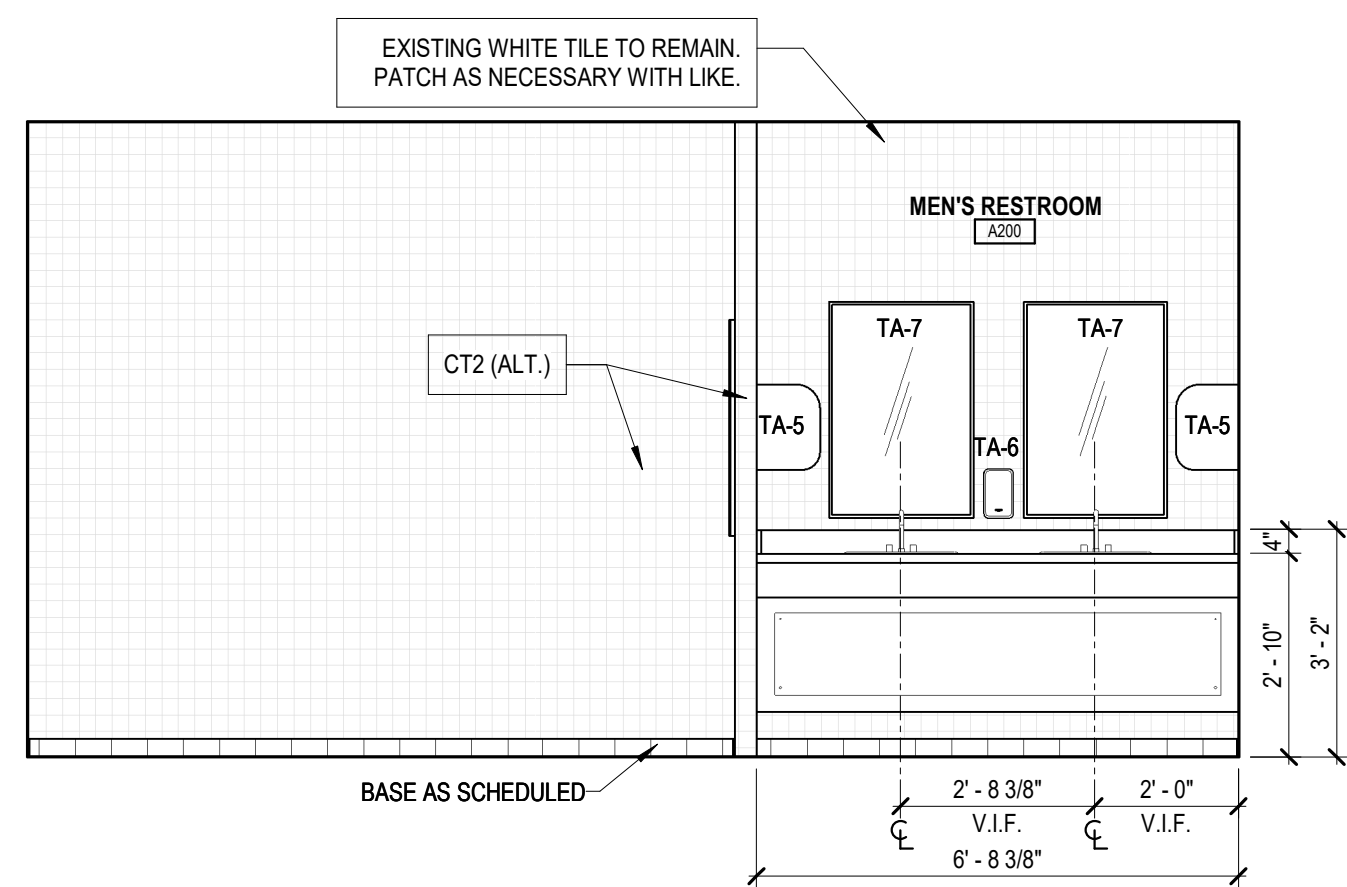
SCALE: 3/8" = 1'-0"



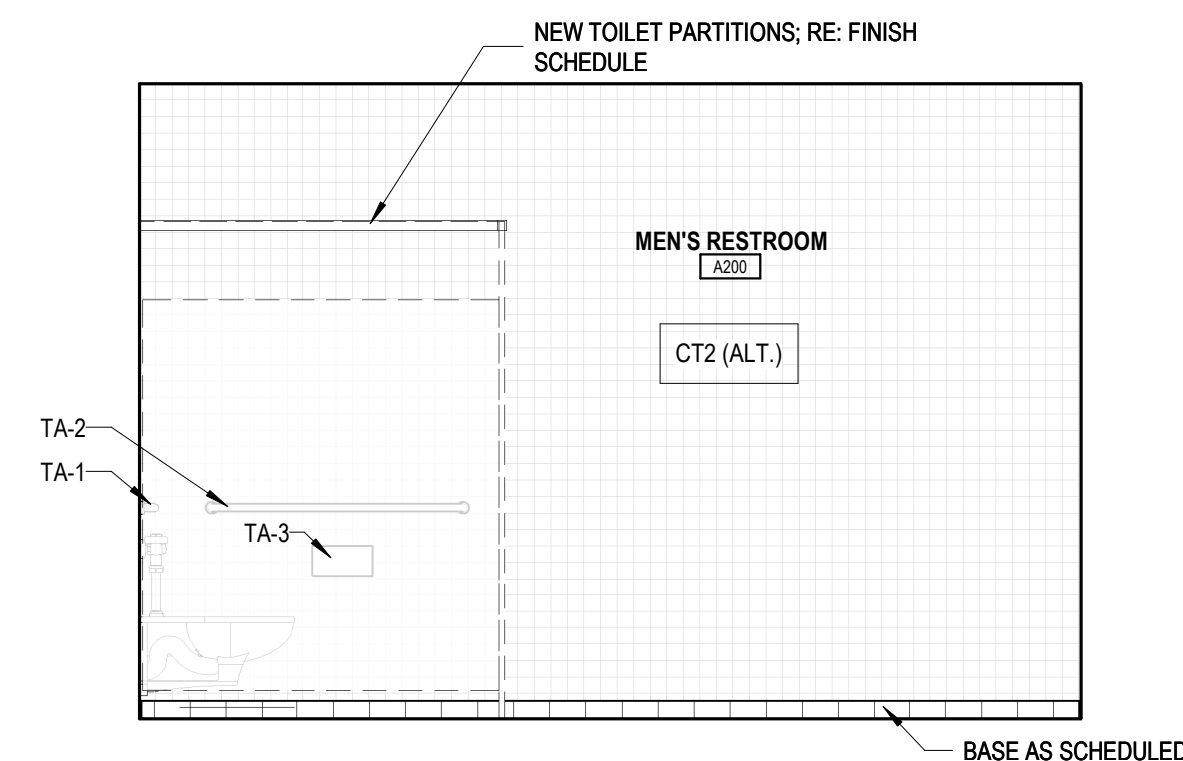
SCALE: $3/8" = 1'-0"$



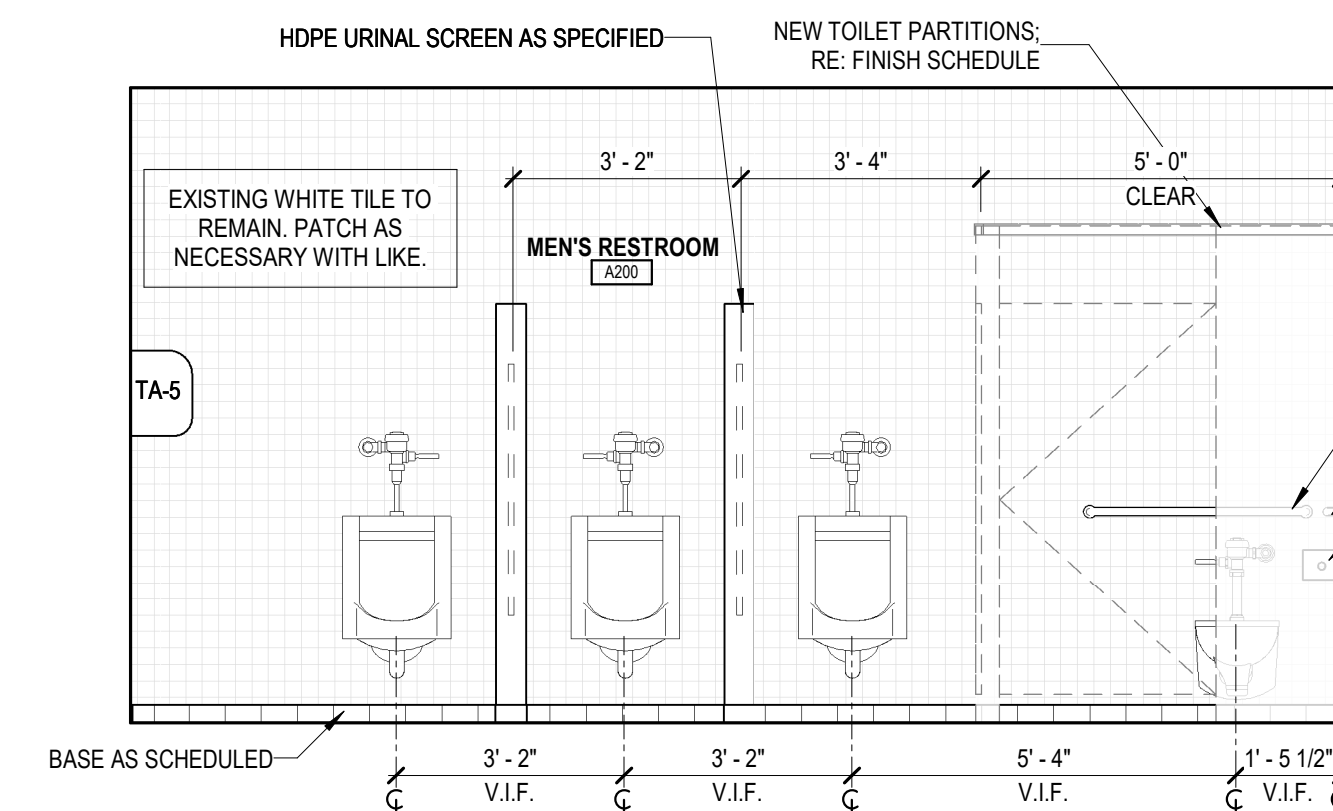
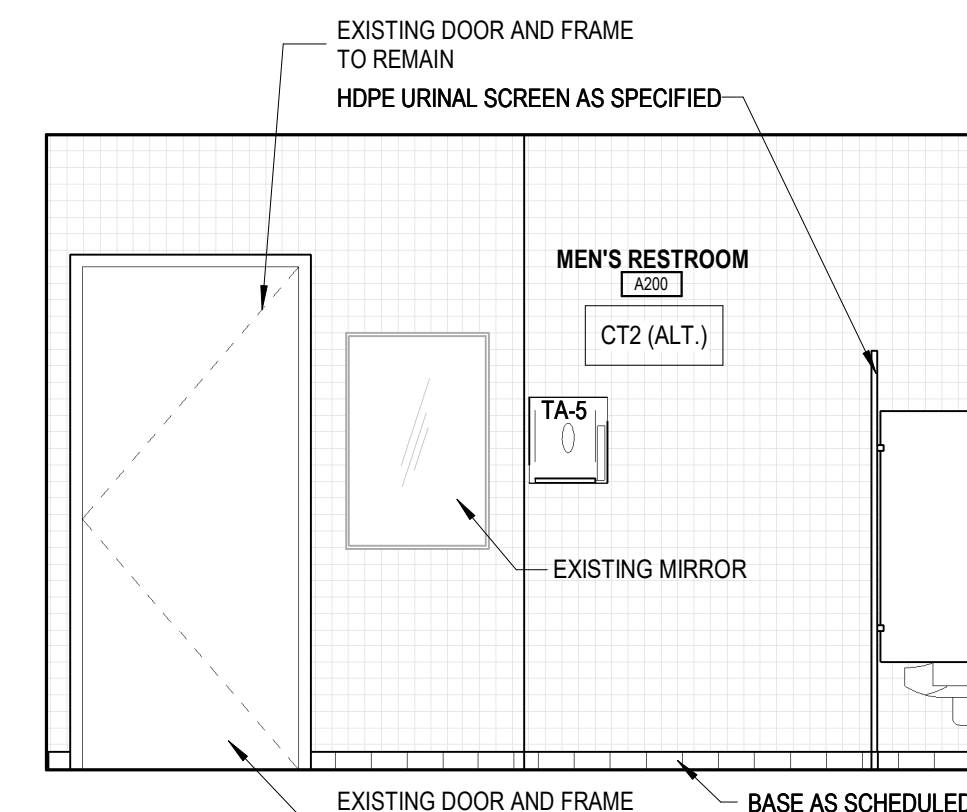
SCALE: 3/8" = 1'-0"



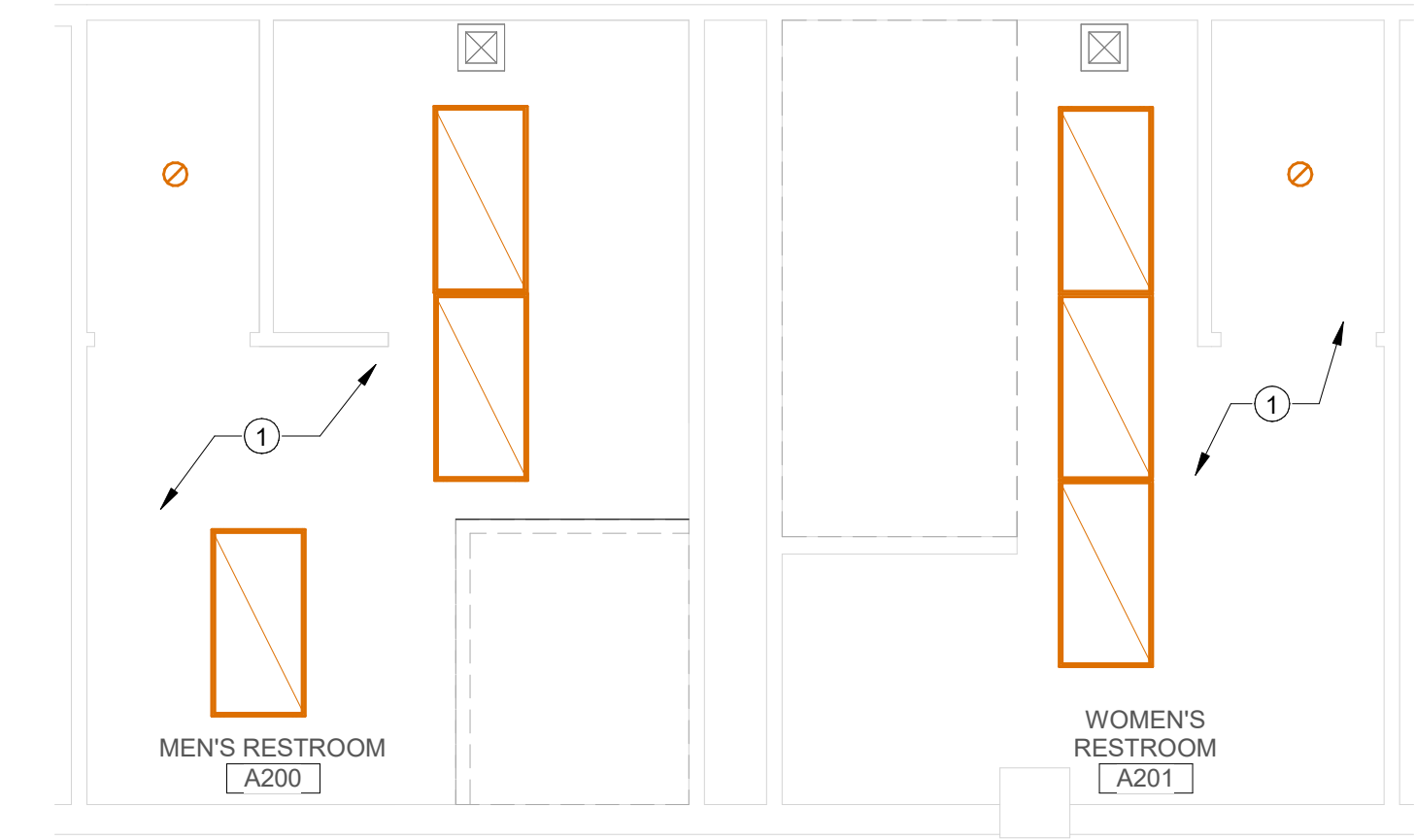
4 INT. ELEV.



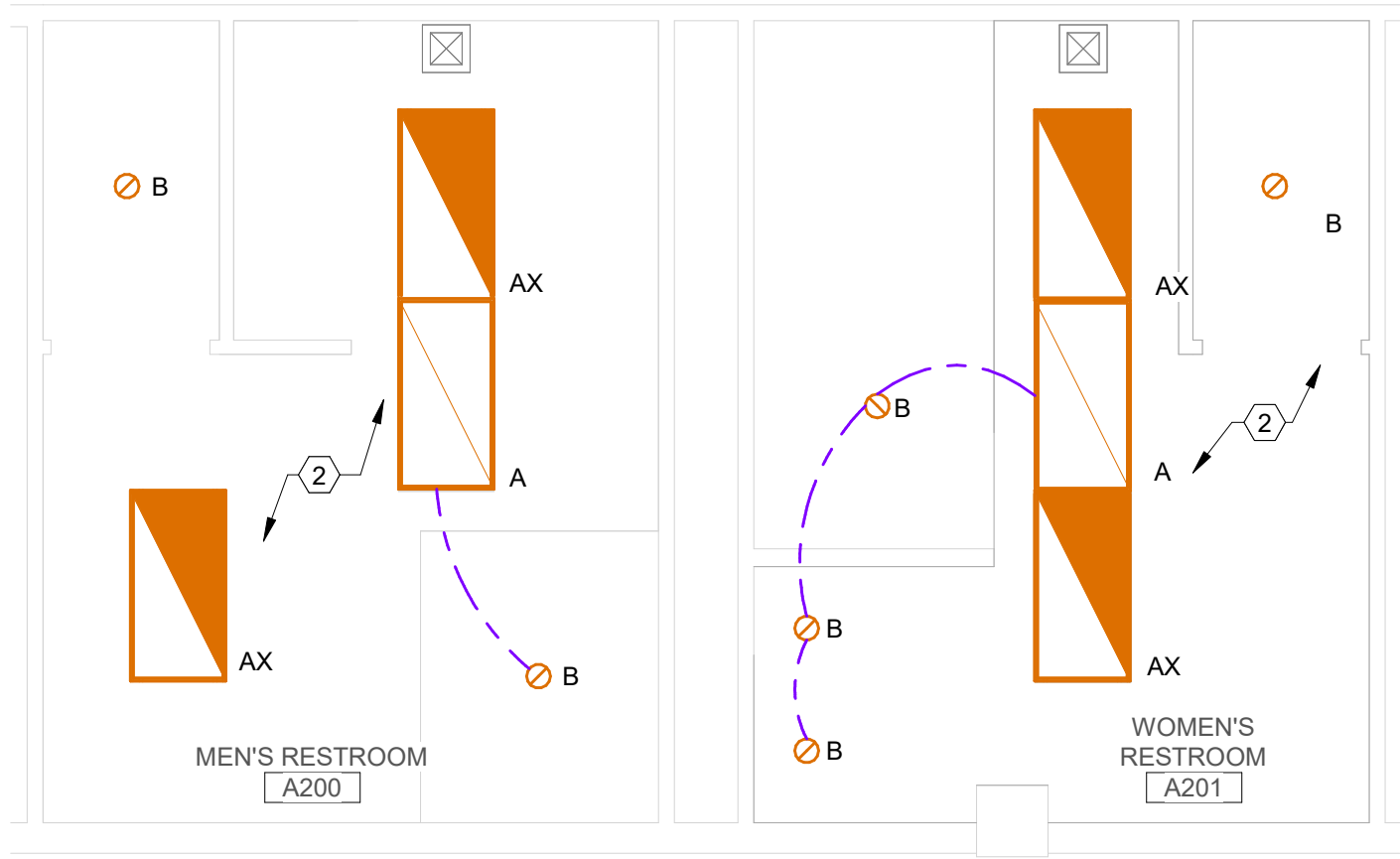
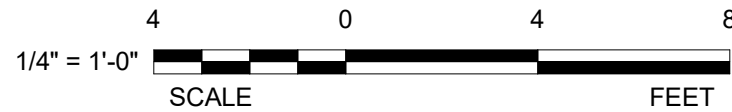
3 INT. ELEV.

2 INT. ELEV1 INT. ELEV

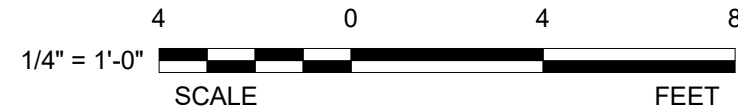
11/8/2023 2:56:12 PM



1 ELECTRICAL DEMOLITION LIGHTING
PLAN
1/4" = 1'-0"



2 ELECTRICAL LIGHTING PLAN
1/4" = 1'-0"



ELECTRICAL DEMOLITION GENERAL NOTES:

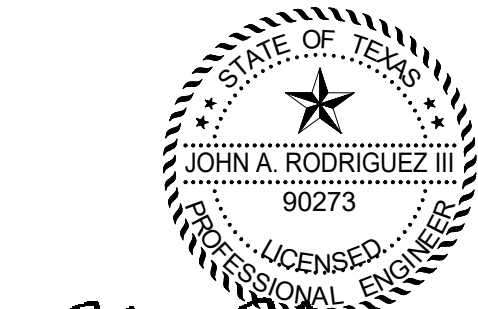
- A. IT IS THE CONTRACTOR'S RESPONSIBILITY TO HAVE VERIFIED EXISTING JOB-SITE CONDITIONS DURING THE BIDDING PERIOD SO HE OR SHE WILL HAVE OBTAINED THE SCOPE OF WORK. THE ELECTRICAL WORK SHALL INCLUDE MATERIALS AND OUTLETS, CONSISTING OF FIXTURES, DEVICES, EQUIPMENT OR APPARATUS. NOT ALL EXISTING OUTLETS ARE NECESSARILY INDICATED ON THE DRAWINGS.
- B. WHEN OUTLETS ARE REMOVED, CONDUIT AND WIRE SHALL BE REMOVED BACK TO THE NEAREST REMAINING ACTIVE J-BOX OR PANEL.
- C. RECONNECT ALL LIGHTS THAT MAY HAVE BEEN INTERRUPTED BECAUSE OF REMODELING WORK.
- D. PROVIDE ALL APPURTENANCES REQUIRED TO REROUTE, RELOCATE, REMOVE, OR REINSTALL ALL ITEMS DESCRIBED IN THESE NOTES.
- E. VERIFY THE LOADING OF EACH CIRCUIT AFFECTED BY REMODELING WORK. THE MAXIMUM LOAD OF ANY BRANCH CIRCUIT MUST NOT EXCEED 80% OF ITS RATING.
- F. REMOVE ALL OUTLETS AND WIRING ASSOCIATED WITH ALL EQUIPMENT BEING REMOVED, INCLUDING MECHANICAL AND PLUMBING EQUIPMENT.

ELECTRICAL GENERAL NOTES:

- A. CONTRACTOR SHALL VERIFY ALL DIMENSIONS AND EXISTING CONDITIONS AT THE JOB SITE BEFORE COMMENCING ANY PHASE OF THE WORK. ADJUSTMENTS FOR FIT AND COORDINATION SHALL BE MADE AT NO ADDITIONAL COST TO THE OWNER. NOTIFY ENGINEER OF ANY CONFLICTS, DISCREPANCIES OR OMISSIONS PRIOR TO COMMENCEMENT OF THE CONTRACT WORK.
- B. CONTRACTOR SHALL REVIEW ALL ARCHITECTURAL, CIVIL, MECHANICAL & STRUCTURAL DRAWINGS AND SPECIFICATIONS FOR ANY ADDITIONAL REQUIREMENTS.
- C. CONTRACTOR SHALL COORDINATE HIS WORK WITH OTHER TRADES.
- D. ALL CONDUIT SHALL BE AS STRAIGHT AS POSSIBLE AND PARALLEL OR PERPENDICULAR TO BUILDING LINES.
- E. ALL WORK SHALL COMPLY WITH CURRENTLY ADOPTED VERSION OF NATION ELECTRICAL CODE.
- F. SEAL ALL WALL, ROOF, AND FLOOR PENETRATIONS WITH UL LISTED FIRE SEALANT.
- G. ALL CONDUIT SHALL BE ROUTED CONCEALED WITHIN WALLS AND/OR ABOVE CEILINGS, WHERE APPLICABLE.
- H. REFER TO #3/E2.1 PLANS FOR EXACT LOCATIONS AND MOUNTING HEIGHTS OF ALL FIXTURES PRIOR TO ROUGH-IN.

Electrical Keynotes	
1	EXISTING LIGHT FIXTURE IS TO BE REMOVED. (TYP) MAINTAIN EXISTING CIRCUITING AND SWITCHING. REFERENCE LIGHTING SCHEDULE ON SHEET #3/E2.01 FOR ADDITIONAL INFORMATION.
2	NEW LIGHT FIXTURES ARE TO BE RECONNECTED TO EXISTING LIGHTING CIRCUIT.

CIRCUIT EXIT SIGNS & EMERGENCY LIGHTS (IF APPLICABLE) TO UNSWITCHED SIDE OF LIGHTING CIRCUIT SERVING AREA IN WHICH LOCATED, TYPICAL. ALL EMERGENCY BATTERY PACKS SHALL BE CIRCUITED TO UNSWITCHED SIDE OF CIRCUIT INDICATED.



11/08/23

NRG
ENGINEERING
5656 S. STAPLES, SUITE 360,
CORPUS CHRISTI, TX 78411
P - 361.852.2727 F - 361.852.2922
TEXAS ENGINEERING FIRM NO. 005318

23219



TEXAS A&M UNIVERSITY - CORPUS CHRISTI
CCH BATHROOMS
6300 OCEAN DRIVE, CORPUS CHRISTI, TX. 78412

KEY PLAN
TURNER | RAMIREZ ARCHITECTS
3751 S. ALAMEDA ST.
CORPUS CHRISTI, TX 78411
p (361)994-8900

www.trarch.com

DATE: 11/08/2023		
SEAL		
REV.	DESCRIPTION	DATE
PROJECT ISSUE DATE:		11/08/2023
PHASE:		PROJECT STATUS
DRAWN BY:		D.A.
CHECKED BY:		J.A.R.
PROJECT NUMBER:		2023-33
SHEET IDENTIFICATION		
ELECTRICAL LIGHTING PLAN		

E1.0

11/8/2023 2:56:12 PM

ELECTRICAL LEGEND			
NOTE: NOT ALL SYMBOLS MAY APPLY TO THIS JOB!			
SYMBOL	DESCRIPTION	SYMBOL	DESCRIPTION
B-2	HOMERUN TO CIRCUIT AND PANEL INDICATED	120V, 1P EQUIPMENT CONNECTION	TELEPHONE OUTLET BOX WITH CONDUIT TO ACCESSIBLE LOCATION ABOVE CEILING
	NEUTRAL CONDUCTOR	240V, 1P EQUIPMENT CONNECTION	DATA/TELEPHONE OUTLET BOX WITH CONDUIT TO ACCESSIBLE LOCATION ABOVE CEILING
	HOT CONDUCTOR	240V, 3P EQUIPMENT CONNECTION	DATA OUTLET BOX WITH CONDUIT TO ACCESSIBLE LOCATION ABOVE CEILING
	GROUNDING CONDUCTOR	208V, 1P EQUIPMENT CONNECTION	208V, 3P EQUIPMENT CONNECTION
	TRAVELER	277V, 1P EQUIPMENT CONNECTION	277V, 3P EQUIPMENT CONNECTION
	SWITCH LEG	480V, 1P EQUIPMENT CONNECTION	480V, 3P EQUIPMENT CONNECTION
(2)	NUMBER IN PARENTHESIS INDICATES CIRCUIT TO WHICH DEVICE IS CONNECTED	DISCONNECT SWITCH - SIZE AND POLE AS NOTED	COMBINATION STARTER/DISCONNECT SWITCH
\$	TOGGLE SWITCH - 120/277V, 20A	STARTER	JUNCTION BOX, SIZED PER N.E.C.
\$3	THREEWAY SWITCH - 120/277V, 20A	480V, 1P EQUIPMENT CONNECTION	SPEAKER
\$4	FOURWAY SWITCH - 120/277V, 20A	COMBINATION STARTER/DISCONNECT SWITCH	HUMIDIFIER OUTLET BOX WITH CONDUIT TO ACCESSIBLE LOCATION ABOVE CEILING
\$5	DIMMER SWITCH	STARTER	THERMOSTAT OUTLET BOX WITH CONDUIT TO ACCESSIBLE LOCATION ABOVE CEILING
\$K	KEY SWITCH - 120/277V, 20A	JUNCTION BOX, SIZED PER N.E.C.	CLOCK OUTLET
\$M	MANUAL MOTOR STARTER	SPEAKER	TELEVISION OUTLET BOX WITH CONDUIT TO ACCESSIBLE LOCATION ABOVE CEILING
	DUPLEX RECEPTACLE - 125V,20A,1P	STARTER	PUSHBUTTON
	GROUND FAULT INTERRUPTER DUPLEX RECEPTACLE 125V,20A,1P	HAND-HELD INTERCOM (ADMIN STATION)	
	ISOLATED GROUND RECEPTACLE - 125V,20A,1P	DOOR BELL/BUZZER	
	SINGLE RECEPTACLE - 250V, AMPS PER PANEL SCHEDULE	DOOR BELL/BUZZER TRANSFORMER	
	QUADRAPLEX RECEPTACLE - 125V,20A,1P	CAMERA	
	ISOLATED GROUND QUADRAPLEX RECEPTACLE - 125V,20A,1P		
	SINGLE RECEPTACLE - 125V,20A,1P		
	ISOLATED GROUND SINGLE RECEPTACLE - 125V,20A,1P		
	DUPLEX RECEPTACLE - 125V,20A,1P (FLOOR MOUNTED)		

ELECTRICAL SYSTEM SECTION 16000

THE ELECTRICAL CONTRACTOR SHALL BE RESPONSIBLE FOR PROVIDING AND DISMANTLING OF TEMPORARY POWER USED FOR CONSTRUCTION AND ALL COSTS INCURRED AS A RESULT OF THIS WORK. COORDINATE ALL TEMPORARY ELECTRICAL SERVICE WORK WITH LOCAL UTILITY COMPANY PRIOR TO COMMENCING WORK.

WORK UNDER THIS CONTRACT INCLUDES MODIFICATIONS TO ANY EXISTING ELECTRICAL SYSTEM AND ALSO PROVIDING NEW MATERIALS, DEVICES, AND ACCESSORIES NECESSARY FOR A COMPLETE FUNCTIONING ELECTRICAL SYSTEM. THE WORK ALSO INCLUDES FINAL CONNECTIONS TO FOOD SERVICE EQUIPMENT ITEMS PROVIDED BY OTHERS. ALL WORK SHALL BE IN ACCORDANCE WITH LOCAL AND NATIONAL ELECTRICAL CODES, ALL LOCAL APPLICABLE ORDINANCES AND LAWS, AS WELL AS, SUBJECT TO INSPECTION.

THE INTENT OF THESE DRAWINGS ARE TO INDICATE THE GENERAL EXTENT OF WORK REQUIRED FOR THE PROJECT. THE DRAWINGS FOR ELECTRICAL WORK ARE DIAGRAMMATIC, SHOWING THE LOCATION, TYPE, DEVICES, AND EQUIPMENT REQUIRED. THE DRAWINGS SHALL NOT BE SCALED FOR EXACT MEASUREMENTS. PROVIDE ALL DEVICE ACCESSORIES, OFFSETS, AND MATERIALS NECESSARY TO FACILITATE THE PROPER OPERATION OF ALL SYSTEMS AND THEIR ASSOCIATED EQUIPMENT AS INDICATED BY THE DESIGN ON THESE PLANS.

COORDINATE WITH THE WORK OF ALL OTHER SECTIONS. VERIFY ALL EXISTING CONDITIONS PRIOR TO BID. REFER TO ARCHITECTURAL PLANS, AS WELL AS, KITCHEN EQUIPMENT PLANS FOR ADDITIONAL INFORMATION REGARDING RELATED EQUIPMENT, CASEWORK, AND ELECTRICAL CONNECTIONS REQUIRED THEREIN.

COMPLY WITH THE LATEST EDITION OF THE NATIONAL ELECTRICAL CODE, NFPA, OSHA, LIFE SAFETY CODES, AND ALL APPLICABLE LAWS IN EFFECT AT THE TIME OF THIS PROPOSAL. IN THE CASE OF CONFLICT, THEN THE STRICTER INTERPRETATION SHALL TAKE PRECEDENCE. ALL MATERIALS USED SHALL BE NEW AND SHALL CONFORM TO THE STANDARDS ESTABLISHED BY THE UNDERWRITER'S LABORATORIES INC.

VERIFY VOLTAGE DROPS, A.I.C. RATINGS FOR ALL EQUIPMENT CONNECTED, AND VERIFY SIZE OF ALL CIRCUIT BREAKERS, CONDUIT, ETC. PRIOR TO INSTALLATION.

ROOF PENETRATIONS SHALL COMPLY WITH SMACNA, NRCA STANDARDS, AS WELL AS, ALL REQUIREMENTS OF THE OWNER AND ROOF METHODS AND MATERIALS WARRANTY. SUB-CONTRACT ROOFING PENETRATION WORK TO AN ENTITY APPROVED FOR USE BY THE OWNER AND ROOF MANUFACTURER.

PANELBOARDS: SHALL BE AS MANUFACTURED BY SQUARE D, EATON, OR SIEMENS. ALL EQUIPMENT SHALL BE U.L. LISTED AND MEET OR EXCEED ALL OF THE LATEST APPLICABLE U.L. AND NEMA STANDARDS. BUSSING SHALL BE COPPER WITH SILVER PLATING. PROVIDE SOLID NEUTRAL BAR.

DISCONNECT SWITCHES: SHALL BE HEAVY-DUTY TYPE AS MANUFACTURED BY SQUARE D, EATON, OR SIEMENS. ALL EQUIPMENT SHALL BE U.L. LISTED AND MEET OR EXCEED ALL OF THE LATEST APPLICABLE U.L. AND NEMA STANDARDS. DO NOT MOUNT DISCONNECT SWITCHES TO ANY HVAC UNIT. LOCATION TO BE COORDINATED WITH MECHANICAL CONTRACTOR.

TRANSFORMERS: SHALL BE AS MANUFACTURED BY SQUARE D, EATON, OR SIEMENS. ALL EQUIPMENT SHALL BE U.L. LISTED AND MEET OR EXCEED ALL OF THE LATEST APPLICABLE U.L. AND NEMA STANDARDS.

CIRCUIT BREAKERS: THERMAL MAGNETIC TYPE, QUICK-MAKE, QUICK-BREAK, BOLT-ON TYPE OF SINGLE UNIT CONSTRUCTION. TWO AND THREE POLE BREAKERS SHALL BE SINGLE UNIT COMMON TRIP TYPE. BREAKERS USED AS A SWITCH FOR 120 VOLT LIGHTING CIRCUITS SHALL BE APPROVED FOR THAT USE AND MARKED "SWD". BREAKERS USED FOR PROTECTING HVAC EQUIPMENT SHALL BE RATED "HACR".

SURGE PROTECTION DEVICE (SPD): SPDs SHALL BE UL1449 4TH EDITION LISTED AND MANUFACTURED BY THOR SQUARE D, EATON OR SIEMENS. SPDs SHALL HAVE STANDARD 7-MODE PROTECTION AND SERVICE ENTRANCE & INTERMEDIATE DISTRIBUTION UNITS SHALL BE UL LABELED WITH 20KA 1-NOMINAL. SURGE CURRENT CAPABILITY FOR SERVICE ENTRANCE DEVICES SHALL BE 300KA PER PHASE, 200KA PER PHASE FOR INTERMEDIATE DISTRIBUTION OR ROOF MOUNTED BRANCH PANELS, AND 100KA FOR BRANCH PANELS. SPDs SHALL BE EXTERNAL TO EQUIPMENT UNLESS NOTED OTHERWISE ON DRAWING.

CABINETS: SHALL BE ONE PIECE CODE GAGE GALVANIZED STEEL WITH MOUNTING STUDS, WIRING GUTTERS OF AMPLE SIZE AND KNOCKOUTS FOR CONDUIT CONNECTIONS AS REQUIRED. BUS BARS SHALL BE 98% CONDUCTIVE COPPER, ALUMINUM, OR COPPER-CLAD ALUMINUM. FRONTS SHALL BE ONE PIECE CODE GAGE FURNITURE STEEL WITH ADJUSTABLE FASTENERS. PROVIDE FLUSH MOUNT UNITS UNLESS OTHERWISE INDICATED. PROVIDE A PLASTIC COVERED TYPEWRITTEN SCHEDULE IDENTIFYING ALL BRANCH CIRCUITS INSIDE EACH CABINET.

GROUNDING SYSTEM: PERMANENTLY AND EFFECTIVELY GROUND ALL METALLIC CONDUIT, SUPPORTS, CABINETS, PANELBOARDS AND SYSTEM NEUTRAL CONDUCTORS. MAINTAIN CONTINUITY OF EQUIPMENT GROUND THROUGHOUT THE SYSTEM. GROUND CLAMPS SHALL BE APPROVED TYPE, SPECIFICALLY DESIGNED FOR GROUNDING. WHERE GROUNDING CONDUCTORS ARE ENCLOSED IN CONDUIT, GROUND CLAMPS SHALL BE OF A TYPE WHICH GROUND BOTH CONDUCTOR AND CONDUIT. ALL CIRCUITS IN FLEXIBLE METAL OR PLASTIC CONDUIT SHALL INCLUDE A GROUND WIRE SIZE IN ACCORDANCE WITH NEC TABLE 250.

ELECTRICAL ABBREVIATIONS

AFF	ABOVE FINISHED FLOOR	NO (N.O.)	NORMALLY OPEN
BFC	BELOW FINISHED CEILING	RCPT(S)	RECEPTACLE(S)
C	CONDUIT	PNL	PANEL
CB	CIRCUIT BREAKER	SO (S.O.)	SPACE ONLY
EC	EMPTY CONDUIT	SP	SPARE
EX	EXISTING	ST (S.T.)	SHUNT TRIP
E.C.	ELECTRICAL CONTRACTOR	SW	SWITCH
EW	ELECTRIC WATER COOLER	UF	UNDERFLOOR
EW	ELECTRIC WATER HEATER	UG	UNDERGROUND
F	FUSE	UNO(U.N.O.)	UNLESS NOTED OTHERWISE
FACP	FIRE ALARM CONTROL PANEL	WG	WIRE GUARD
FMCP	MASS NOTIFICATION CONTROL PANEL	WP	WEATHERPROOF
FSCP	SECURITY CONTROL PANEL	XFMR	TRANSFORMER
G	GROUND (EQUIPMENT)	TBD	TO BE DETERMINED OR COORDINATED BY OWNER/ARCHITECT
GFCI	GROUND FAULT INTERRUPTER		
HD	HAND DRYER		
IC	INTERRUPTING CAPACITY	GFGI	GOVERNMENT FURNISHED GOV. INSTALLED.
IG	ISOLATED GROUND	COR	CONTRACTING OFFICER'S REPRESENTATIVE
MTD	MOUNT OR MOUNTED		
NC (N.C.)	NORMALLY CLOSED		
NF	NONFUSED		
NIC	NOT IN CONTRACT		
NL	NIGHT LIGHT - ON 24 HRS		
PC	PHOTOCELL		
TC	TIME CLOCK		

LIGHTING CONTROL NARRATIVE:

- OCCUPANT SENSOR CONTROLS SHALL BE UTILIZED THROUGHOUT FOR INTERIOR LIGHTING CONTROL, EXCEPT IN AREAS FOR WHICH EXCEPTIONS APPLY.
- NO DAYLIGHT RESPONSIVE CONTROLS ARE REQUIRED DUE TO THE FACT THAT NO ZONE MEETS THE MINIMUM REQUIREMENT OF 150WATTS PER ZONE.
- EXTERIOR LIGHTING WILL BE CONTROLLED VIA TIME CLOCK AND PHOTOCELL.
- REDUCED LIGHTING POWER DENSITY (IECC C408.3) METHOD WILL BE UTILIZED TO SATISFY THE ADDITIONAL EFFICIENCY PACKAGE OPTION IN IECC C406.

LIGHTING SYSTEM CONTROLS FUNCTIONAL TESTING (IECC C408.3):

UNDER 2015 IECC, LIGHTING SYSTEM CONTROLS TESTING IS REQUIRED FOR ALL COMMERCIAL PROJECTS. A LETTER FROM THE THIRD PARTY REGISTERED DESIGN PROFESSIONAL OR COMMISSIONING AGENT THAT FOLLOWS THE REQUIREMENT IN C408.3.1 WILL FULFILL THIS REQUIREMENT. THIS INCLUDES IN PARTICULAR:

- (A) OCCUPANT SENSOR CONTROLS, APPLICABLE FOR ALL PROJECTS C405.2.1
- (B) TIME SWITCH CONTROLS, APPLICABLE FOR ALL PROJECTS C405.2.2
- (C) DAYLIGHT RESPONSIVE CONTROLS, WHERE APPLICABLE C405.2.3
- (D) SPECIFIC APPLICATION CONTROLS, WHERE APPLICABLE C405.2.4 (DISPLAY LIGHTING, ETC.)
- (E) EXTERIOR LIGHTING CONTROLS, WHERE APPLICABLE C405.2.5

CONDUIT: SHALL BE SIZED TO COMPLY WITH NEC FOR NUMBER AND SIZE OF CONDUCTORS INSTALLED, MINIMUM OF 24" BELOW GRADE. PROVIDE SCHEDULE 40 PVC PLASTIC OR RIGID STEEL CONDUIT BELOW GRADE, MINIMUM SIZE 3/4". PROVIDE RIGID STEEL ELBOWS WHEN UNDERGROUND CONDUIT PENETRATES THE FLOOR SLAB. PROVIDE ELECTRICAL METALLIC TUBING (EMT) MEETING F8W-C563, ARMOR CABLE, OR FLEXIBLE CONDUIT (IN LENGTHS 6' OR LESS) FOR INTERIOR LOCATIONS. EMT CONNECTORS AND COUPLINGS 2" AND SMALLER SHALL BE COMPRESSION TYPE. CLAMP CONDUIT TO BOXES WITH BUSSING INSIDE AND LOCKNUT OUTSIDE.

- RIGID STEEL CONDUIT: ANSI C80.1
- INTERMEDIATE STEEL CONDUIT: UL 1242
- ELECTRICAL METALLIC TUBING AND FITTINGS: ANSI C80.3
- FLEXIBLE METAL CONDUIT: ZINC COATED STEEL
- LIQUID-TIGHT FLEXIBLE METAL CONDUIT AND FITTINGS: UL 360. FITTINGS TO BE SPECIFICALLY APPROVED FOR USE WITH THIS RACEWAY.
- MC CABLE IS APPROVED FOR INSTALLATION ONLY AT THE END OF A RIGID CONDUIT RUN AND IS ONLY TO ORIGINATE FROM AN APPROVED JUNCTION BOX AND FEED DIRECTLY DOWN TO DEVICE.

CONDUCTORS: INSULATED SOFT ANNEALED 98% PURE COPPER WITH COLOR CODING, B AND S GAGE, #12 TO BE SOLID OR STRANDED, #10 AND LARGER TO BE STRANDED, MINIMUM #12, UNLESS OTHERWISE INDICATED. ALL EQUIPMENT TO BE PROVIDED WITH CU/AL 75° DEGREE C. TERMINAL LUGS. CONDUCTORS WITH "THHN" INSULATION MAY NOT BE USED UNDERGROUND AT SERVICE ENTRANCES, OUTSIDE, OR IN WET LOCATIONS. ALL INSULATION TO BE RATED FOR 90° DEGREE C OR 600 VOLT AND TYPES AS FOLLOWS:

BRANCH CIRCUITS	THHN, THWN2
FEEDERS	THWN2
SERVICE ENTRANCE	THWN2, XHHW, XHHW2

DEVICES & COVERPLATES: PUBLIC AREAS: ALL DEVICES AND COVERPLATES SHALL BE STAINLESS STEEL. STANDARD DUPLEX RECEPTACLES SHALL BE GROUNDING TYPE, 20 AMP, NEMA 5-20R, SIDE OR BACK WIRED.

SINGLE RECEPTACLE: 15 AMP, 125 VOLT, 2-POLE, 3-WIRE, GROUNDING TYPE WITH NEMA CONFIGURATION 5-15R. HUBBELL #5251-#. (DEVICE COLOR IS DEPENDENT ON AREA OF BUILDING).

DUPLEX RECEPTACLE: 20 AMP, 125 VOLT, 2-POLE, 3-WIRE, GROUNDING TYPE WITH NEMA CONFIGURATION 5-20R. HUBBELL #5342-#. (DEVICE COLOR IS DEPENDENT ON AREA OF BUILDING).

GROUND-FAULT INTERRUPTER RECEPTACLE: 20 AMP, 125 VOLT, 2-POLE, 3-WIRE, GROUNDING TYPE WITH NEMA CONFIGURATION 5-20R, FEED-THRU TYPE CAPABLE OF PROTECTING CONNECTED DOWNSTREAM RECEPTACLES, UL RATED CLASS A, GROUP 1, SOLID STATE GROUND-FAULT SENSING LEVEL WITH 5 ma GROUND-FAULT TRIP LEVEL. HUBBELL #1G5362#. (DEVICE COLOR IS DEPENDENT ON AREA OF BUILDING).

WEATHERPROOF RECEPTACLE: SHALL BE A GROUND-FAULT INTERRUPTER WITH STAINLESS STEEL, GASKETED LIDS AND PLATE. PLATE TO CONSIST OF TWO SPRING LOADED LIDS HINGED AT TOP.

PLUG FILLERS: PROVIDE FLUSH RECEPTACLE COVERS AT ALL DUPLEX RECEPTACLES IN PUBLIC AREAS. COLOR OF FILLERS TO MATCH COLOR OF RECEPTACLE AND COVERPLATE.

LIGHTING FIXTURES: ALL LIGHTING FIXTURES AND ASSOCIATED LAMPS AND BALLASTS SHALL BE FURNISHED AND INSTALLED BY THE ELECTRICAL CONTRACTOR.

LAYOUT BRANCH CIRCUIT WIRING AND ARRANGE HOMERUNS FOR MAXIMUM ECONOMY AND EFFICIENCY. INCREASE WIRE AND CONDUIT SIZE ACCORDINGLY IF VOLTAGE DROP EXCEEDS 3% OR LENGTH OF RUN EXCEEDS 100 FEET.

CONCEAL WIRING SYSTEM ABOVE SUSPENDED CEILINGS OR IN WALL OR FLOOR CONSTRUCTION WHERE POSSIBLE. INSTALL CONDUIT PARALLEL OR PERPENDICULAR TO ALL BUILDING LINES, SUCH THAT ALL OPENINGS, DEPRESSIONS, PIPES, DUCTS, STRUCTURE, ETC. ARE AVOIDED.

INSTALL CONDUIT CONTINUOUS BETWEEN BOXES AND CABINETS WITH NO MORE THAN FOUR (4) 90° DEGREE BENDS. SECURELY FASTEN IN PLACE WITH STRAPS, HANGERS AND STEEL SUPPORTS AS REQUIRED. DO NOT SUPPORT CONDUIT FROM SUSPENDED CEILING GRID OR SUSPENSION WIRES. REAM CONDUIT ENDS AND THOROUGHLY CLEAN BEFORE INSTALLATION. OPENINGS SHALL BE PLUGGED OR COVERED TO KEEP CONDUIT FREE OF DEBRIS. SWITCHES AND OUTLETS SHALL NOT BE USED TO FEED THRU TO THE NEXT SWITCH OR OUTLET. THE DISCONNECTION OR REMOVAL OF A RECEPTACLE, FIXTURE OR OTHER DEVICE FED FROM A BOX SHALL NOT INTERFERE WITH OR INTERRUPT THE CONDUCTOR CONTINUITY.

ADJUSTING AND TESTING: ALL ELECTRICAL EQUIPMENT SHALL BE ADJUSTED AND TESTED FOR PROPER OPERATION. COMPLETED WIRING SYSTEM SHALL BE FREE OF SHORT CIRCUITS.

TOUCH-UP OR REFINISH DAMAGED SURFACES OF FIXTURES AND EQUIPMENT, EXPOSED TO VIEW, TO PRESENT A "NEW" APPEARANCE.

ALL CONDUIT AND JUNCTION BOXES LOCATED WITHIN AN EXPOSED STRUCTURAL SYSTEM SHALL BE PAINTED TO MATCH THE COLOR OF THE STRUCTURE (COLOR TO BE VERIFIED WITH ARCHITECT).

ALL LAMPS, FIXTURES AND ASSOCIATED HOUSINGS, LENSES, AND LOUVERS SHALL BE CLEANED PRIOR TO OWNER ACCEPTANCE.

TOGGLE TYPE SWITCH: 20 AMP, 120/277 VOLT AC SINGLE-POLE, QUIET TYPE, WITH MOUNTING YOKE INSULATED FROM MECHANISM, EQUIPPED WITH PLASTER EARS, SIDE-WIRED SCREW TERMINALS. HUBBELL #HBL 12211. A. 2-POLE, 3-WAY & 4-WAY SWITCHES SHALL BE OF THE SAME MAKE AS FOR SINGLE-POLE.

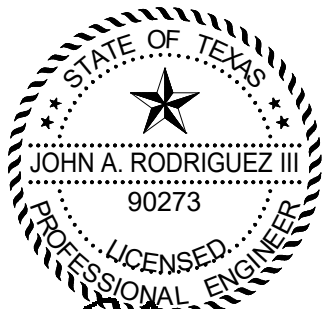
PILOT TYPE TOGGLE SWITCH: INSTALL SWITCH DEVICE WITH 1/25 WATT NEON PILOT INTEGRAL WITH TOGGLE HANDLE, RATED 120/277 VOLT AC. PILOT LIGHT GLOWS IN THE "ON" POSITION. HUBBELL #HBL 1221PL.

ELECTRICAL EQUIPMENT IDENTIFICATION :

- ENGRAVED PLASTIC-LAMINATE NAMEPLATES: SHALL BE ENGRAVING STOCK MELAMINE PLASTIC LAMINATE 1/16" THICK, 1-1/2" HIGH (2" HIGH FOR 2 LINES OF TEXT) WITH 1/2" HIGH ENGRAVER'S STYLE LETTERS. COLOR SHALL BE BLACK WITH WHITE LETTERING. NAMEPLATE SHALL BE PUNCHED FOR MECHANICAL FASTENING WITH SELF-TAPPING STAINLESS STEEL SCREWS, UNLESS ADHESIVE MOUNTING IS NECESSARY DUE TO SUBSTRATE MATERIAL.
- UNDERGROUND-TYPE PLASTIC LINE MARKER: SHALL BE PERMANENT, BRIGHT COLORED, CONTINUOUS-PRINTED PLASTIC TAPE, INTENDED FOR DIRECT BURIAL SERVICE, NOT LESS THAN 6" WIDE x 4 MILS THICK. PROVIDE TAPE WITH WORDED PRINT WHICH MOST ACCURATELY DESCRIBES THE TYPE OF SERVICE FOR BURIED CABLE.
- CABLE/CONDUCTOR IDENTIFICATION BANDS: SHALL BE VINYL-CLOTH, SELF-ADHESIVE, WRAP-AROUND TYPE MARKER; EITHER PRE-NUMBERED PLASTIC COATED TYPE OR WRITE-ON TYPE WITH CLEAR PLASTIC SELF-ADHESIVE COVER FLAP; NUMBERED TO SHOW CIRCUIT IDENTIFICATION.

GENERAL ROOF PLAN NOTES:

- CONTRACTOR SHALL CAREFULLY REVIEW CONTRACT DOCUMENTS INCLUDING DRAWINGS AND PROJECT MANUAL. INFORMATION REGARDING WORK OF THE VARIOUS TRADES AND SUBCONTRACTORS ARE DISPERSED THROUGHOUT THE DOCUMENTS AND CANNOT BE ACCURATELY DETERMINED WITHOUT REFERENCE TO THE FULL SET OF DOCUMENTS.
- CONTRACTOR SHALL COORDINATE INSTALLATION OF UTILITIES ABOVE THE CEILING TO PROVIDE GREATEST POSSIBLE CLEARANCE FOR INSTALLATION OF AND FUTURE CHANGES IN MECHANICAL EQUIPMENT. CONDUIT AND PIPE TO BE RUN THROUGH TRUSSES. COORDINATE SERVICE AND ACCESS POINTS ABOVE CEILING TO MINIMIZE REQUIRED ACCESS.
- VERIFY EXACT LOCATION OF ALL HVAC EQUIPMENT WITH HVAC CONTRACTOR PRIOR TO COMMENCING ANY WORK.
- ALL EQUIPMENT (RECEPTACLES, DISC. SWITCHES, ETC.) SHALL BE WEATHERPROOF.
- ALL FUSES FOR HVAC UNITS SHALL BE SIZED AS REQUIRED BY MANUFACTURER'S NAMEPLATE ON EQUIPMENT. FUSES SHALL BE CURRENT LIMITING, TIME DELAY BUSSMAN FRN-R OR EQUAL BY GOULD SHAWMUT.
- ALL CONDUIT SHALL BE RUN CONCEALED BELOW ROOF. PROVIDE WATERTIGHT PITCH POCKETS AS REQUIRED.
- REFER TO HVAC DRAWINGS FOR ADDITIONAL ELECTRICAL REQUIREMENTS. PROVIDE ALL CONTROL CONDUIT AND WIRING AS REQUIRED FOR INTERLOCKING FANS, MOTORS, ETC. AS INDICATED ON THE HVAC DRAWINGS.
- ALL DEVICES INSTALLED ON ROOF TOP EQUIPMENT SHALL BE MOUNTED ON A NON-REMOVABLE PANEL OF THE EQUIPMENT; THIS LOCATION SHALL BE COORDINATED WITH THE MECHANICAL OR PLUMBING CONTRACTOR PRIOR TO ROUGH-IN.
- ROOF DECK PENETRATIONS: CONTRACTOR SHALL SECURE LANDLORD APPROVAL FOR ALL BUILDING ROOF DECK PENETRATIONS. REQUESTS SHALL BE ON A SCALED ROOF PLAN SHOWING EXACT LOCATION & SIZE OF PENETRATION & INCLUDE DETAILS OF MOUNTING, FLASHING & SEALING. CONTRACT WITH THE LANDLORD'S ROOFING CONTRACTOR TO PERFORM ALL WORK AT THIS CONTRACTOR'S SOLE EXPENSE. CONTRACTOR SHALL COORDINATE THE LOCATION OF ALL ROOFTOP EQUIPMENT, NEW ROOF PENETRATIONS, REMOVAL OF EXISTING ROOFTOP EQUIPMENT & INSTALLATION OF ALL ROOFTOP EQUIPMENT WITH THE LANDLORD.



11/08/23

NRG
ENGINEERING
5656 S. STAPLES, SUITE 360,
CORPUS CHRISTI, TX 78411
P - 361.852.2727 F - 361.852.2922
TEXAS ENGINEERING FIRM NO. 005318

23219



TEXAS A&M UNIVERSITY - CORPUS CHRISTI
CCH BATHROOMS
6300 OCEAN DRIVE, CORPUS CHRISTI, TX. 78412

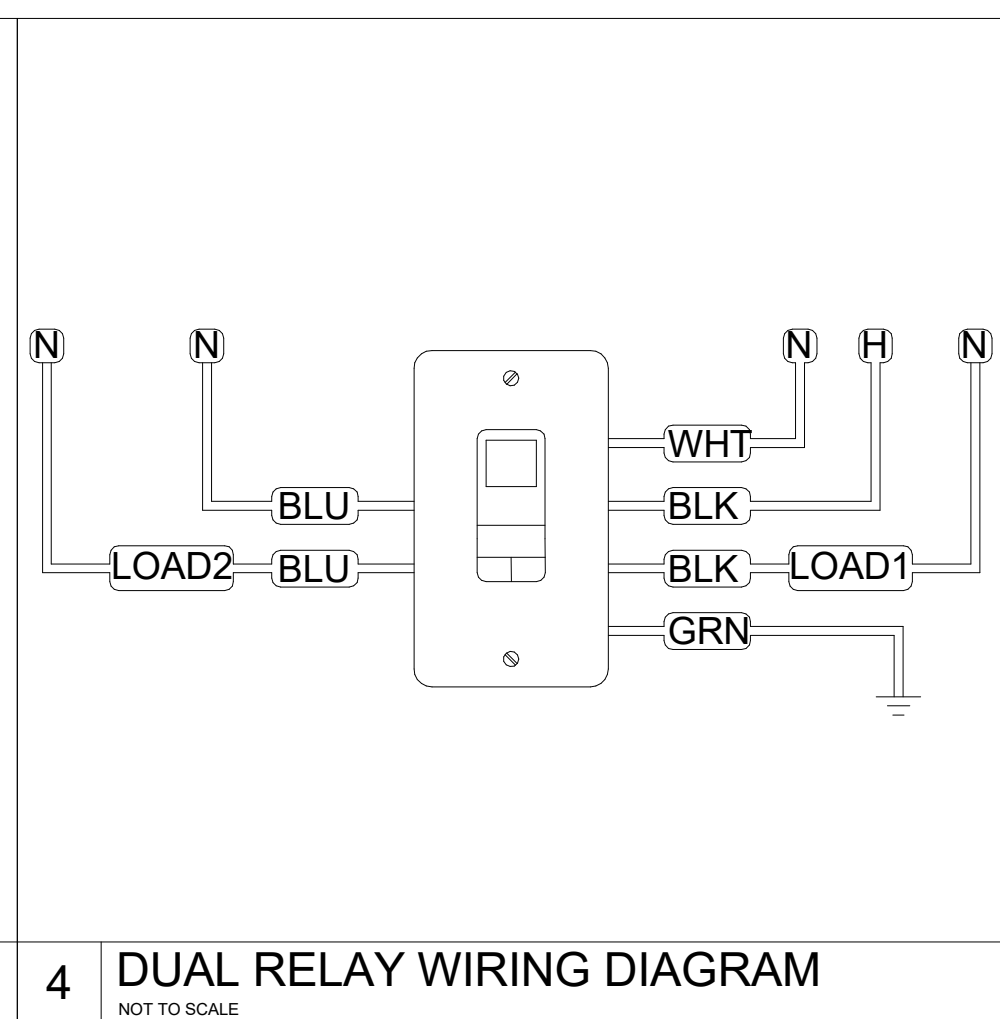
KEY PLAN
TURNER | RAMIREZ ARCHITECTS
3751 S. ALAMEDA ST.
CORPUS CHRISTI, TX 78411
p (361)994-8900

www.trarch.com

DATE: 11/08/2023		
SEAL		
REV.	DESCRIPTION	DATE
PROJECT ISSUE DATE:		11/08/2023
PHASE:		PROJECT STATUS
DRAWN BY:		D.A.
CHECKED BY:		J.A.R.
PROJECT NUMBER:		2023-33
SHEET IDENTIFICATION		

ELECTRICAL
SPECIFICATIONS

E2.0



KEY PLAN

TURNER | RAMIREZ ARCHITECTS
3751 S. ALAMEDA ST.
CORPUS CHRISTI, TX 78411
p (361)994-8900

www.trarch.com

ELECTRICAL SCHEDULES & DETAILS

11/8/2023 2:30:47 PM

PLUMBING LEGEND		
DISREGARD LEGEND ITEMS NOT INDICATED ON DRAWINGS		
SYMBOL	DESCRIPTION	ABBR.
— — — — —	SOIL OR WASTE PIPING B.G.	WST
— — — — —	SOIL OR WASTE PIPING A.G.	WST
— GW —	GREASE WASTE PIPING	GW
- - - - -	VENT PIPING	V
— SD —	STORM DRAIN PIPING	SD
— OD —	OVERFLOW STORM DRAIN PIPING	OD
— G —	GAS LINE	G
— F —	FIRE OR SPRINKLER LINE	F
— — — — —	DOMESTIC COLD WATER	CW
— — — — —	DOMESTIC HOT WATER	HW
— — — — —	DOMESTIC HOT WATER RETURN	HWR
— TW —	TEMPERED DOMESTIC HOT WATER	TW
— GV —	GATE VALVE	GV
— GLV —	GLOBE VALVE	GLV
— BV —	BALL VALVE	BV
— CKV —	CHECK VALVE	CKV
— BAV —	BALANCING VALVE	BAV
— BTV —	BUTTERFLY VALVE	BTV
— PLV —	PLUG VALVE	PLV
— PRV —	PRESSURE REDUCING VALVE	PRV
— T&P —	PRESSURE RELIEF VALVE	T&P
— STR —	STRAINER	STR
— UN —	UNION	UN
— TW —	THERMOMETER WELL	TW
— PG —	PRESSURE GAUGE	PG
— THRM —	THERMOMETER	THRM
— D —	CONDENSATE OR INDIRECT DRAIN	D
— — — — —	BRANCH CONNECTION, TOP	--
— — — — —	BRANCH CONNECTION, BOTTOM	--
— — — — —	ELBOW UP	--
— — — — —	ELBOW DOWN	--
— FCO —	FLOOR CLEANOUT (INTERIOR)	FCO
— COG —	CLEANOUT AT GRADE (EXTERIOR)	COG
— WCO —	WALL CLEANOUT	WCO
— FD —	FLOOR DRAIN	FD
— FS —	FLOOR SINK	FS
— HB —	HOSE BIBB	HB
— WH —	WALL HYDRANT	WH
— — — — —	NEW TO EXISTING PIPE CONNECTION	--
— ABBR. —	ABBREVIATIONS	ABBR.
— AFF —	ABOVE FINISHED FLOOR	AFF
— AP —	ACCESS PANEL	AP
— BFF —	BELOW FINISHED FLOOR	BFF
— BOP —	BOTTOM OF PIPE	BOP
— D —	INDIRECT DRAIN	D
— (E) —	EXISTING TO REMAIN	(E)
— (D) —	EXISTING TO BE DEMOLISHED	(D)
— (R) —	EXISTING TO BE RELOCATED	(R)
— FIN —	FINISHED	FIN
— FLR —	FLOOR	FLR
— INV. EL. —	INVERT ELEVATION	INV. EL.
— NC —	NORMALLY CLOSED	NC
— SW —	SOFT WATER	SW
— TP —	TRAP PRIMER	TP
— TYP —	TYPICAL	TYP
— VTR —	VENT THRU ROOF	VTR
NOT ALL SYMBOLS MAY BE USED		

GENERAL NOTES:

- CONTRACTOR TO FIELD VERIFY ELEVATIONS AND DIMENSIONS OF FINISHED FLOORS AND WALLS. TRUE ALL DRAINS, ROUGH-INS AND CARRIERS IN ACCORDANCE WITH THE PROPOSED ELEVATIONS AND FINISHED SURFACES.
- MOUNTING HEIGHT ELEVATION OF ALL WALL HUNG OR COUNTER MOUNTED FIXTURES SHALL BE COORDINATED WITH THE ARCHITECT PRIOR TO INSTALLATION OF ROUGH-IN WORK.
- FOR ALL FIXTURES AND EQUIPMENT WITH ASSOCIATED TRIM OR COMPONENT ACCESSORIES, PROVIDE UNDER SEPARATE DIVISIONS AND REQUIRING PLUMBING CONNECTIONS; THIS CONTRACTOR SHALL FIELD COORDINATE EXACT REQUIREMENTS OF, MAKE PROVISIONS FOR, AND SUPPLY ALL MATERIALS AND LABOR FOR MAKING FINAL CONNECTIONS.
- CONTRACTOR SHALL REFER TO SHOP DRAWINGS OF EQUIPMENT TO BE SUPPLIED FOR FINAL COORDINATION OF ALL ROUGH-IN OPENINGS BEFORE BEGINNING WORK.
- ALL FIXTURE AND EQUIPMENT STUB-OUTS SHALL BE PROVIDED WITH A STOP VALVE. ALL FIXTURE STOPS SHALL BE SOLID BRASS, LOOSE KEY OPERATED, CHROME PLATED (WERE EXPOSED), AND FITTED TIGHT TO CHROME PLATED BRASS WALL ESCUTCHEON PLATES. SUPPLY RISERS SHALL BE TYPE "L" TUBING, CHROME PLATED. PROVIDE 1/2" FIP X 3/8" OD COMPRESSION FITTINGS FOR ALL SINKS, LAVATORIES, AND SIMILAR FIXTURES.
- ALL P-TRAPS WITHIN THE BUILDING, ABOVE GRADE AND EXPOSED TO INSPECTION SHALL BE CHROME PLATED ADJUSTABLE, CAST BRASS WITH CLEANOUT PLUG. PROVIDE C.P. CAST BRASS SLIP NUTS AND WASHERS, 17 GAGE SEAMLESS TUBULAR BRASS DRAIN TO WALL AND WALL FLANGE. PROVIDE 1-1/2" P-TRAP FOR ALL LAVATORIES AND SIMILAR FIXTURES. PROVIDE 1-1/2" P-TRAP FOR ALL SINKS AND SIMILAR FIXTURES, MCGUIRE OR EQUAL.
- ALL ROUGH-IN OPENINGS SHALL BE FITTED WITH CHROME PLATED, WROUGHT BRASS DEEP BELL OR BOX ESCUTCHEON PLATES FITTED TIGHT TO PIPE AND FLUSH TO WALL. STEEL ESCUTCHEON PLATES ARE NOT ACCEPTED.
- ALL EXPOSED BRASS SHALL BE CHROME PLATED.
- ALL HANDICAPPED ACCESSIBLE FIXTURES SHALL BE OF APPROVED TYPES AND WITH REQUIRED CONTROLS INSTALLED TO HEIGHTS AND CLEARANCES, AS PRESCRIBED BY THE AMERICANS WITH DISABILITIES ACT (ADA) AND THE TEXAS ACCESSIBILITY STANDARDS (TAS). FIXTURES SHALL COMPLY WITH ALL FEDERAL, STATE, AND LOCAL ACCESSIBILITY CODE REQUIREMENTS. PROVIDE FIXTURES WITH DEPTHS AT MAXIMUM PERMITTED AND AVAILABLE FOR INTENDED FIXTURE USE.
- INSULATE ALL EXPOSED WATER AND DRAIN LINES ON ADATAS ACCESSIBLE LAVATORIES AND SINKS WITH MCGUIRE PRO WRAP OR EQUAL. PROVIDE OFFSET DRAIN FITTINGS WHERE REQUIRED TO PROVIDE MINIMUM CLEARANCES.
- ALL ADATAS SINKS SHALL BE STAMPED WITH DRAIN OUTLET AT THE REAR OF THE BOWL.
- PLUMBING FIXTURES SHALL BE OF WATER CONSERVATION TYPE IN ACCORDANCE WITH SENATE BILL 587 FOR WATER SAVING PERFORMANCE. LAVATORY AND SINK FAUCETS SHALL INCLUDE 0.5 GPM AND 2.2 GPM FLOW CONTROL RESPECTIVELY.
- ORIENT ADATAS WATER CLOSET FLUSH VALVE WITH OPERATOR ON LARGE SIDE OF ENCLOSURE AND BELOW GRAB BARS.
- SEAL ALL SPACES BETWEEN PLUMBING FIXTURES AND MOUNTING SURFACES WITH WHITE LATEX CAULK WIPED SMOOTH AND FLUSH WITH FIXTURE.
- FLOOR DRAINS SHALL BE INSTALLED AT LOW POINTS OF UNIFORMLY SLOPED FLOOR. CONTRACTOR SHALL FIELD COORDINATE WITH STRUCTURAL TO INSURE FLOORS ARE UNIFORMLY SLOPED ACROSS ENTIRE TOILET ROOMS OR OVER AS WIDE AN AREA AS PRACTICAL FOR OPEN AREA FLOOR DRAINS. CONVEX FLOOR SLOPE IN THE IMMEDIATE VICINITY OF THE FLOOR DRAIN IS NOT ACCEPTABLE.
- EQUIVALENT MANUFACTURES OF CHINA FIXTURES ARE KOHLER, AND AMERICAN STANDARD. EQUIVALENT MANUFACTURES OF STAINLESS FIXTURES ARE JUST, ELKAY, AND ADVANCE TABCO.
- WATER HEATER SHALL BE PROVIDED WITH CODE APPROVED VACUUM BREAKER AND BRASS ASME TEMPERATURE AND PRESSURE RELIEF VALVE. ROUTE TPR DRAIN LINE FULL SIZED TO EXTERIOR OF BUILDING AND TERMINATE 6" ABOVE FINISHED GRADE, OR AS INDICATED ON PLANS.
- ROOF PENETRATIONS SHALL BE DONE IN STRICT COMPLIANCE WITH THE ARCHITECTS SPECIFICATIONS AND SHALL BE LEAK PROOF.
- FIELD VERIFY ALL EXISTING CONDITIONS AND LOCATION OF STUB OUTS. NOTIFY ARCHITECT OF ANY DISCREPANCIES IMMEDIATELY WHICH MAY AFFECT THE INTENDED DESIGN.
- ALL PLUMBING WORK SHALL BE DONE IN STRICT COMPLIANCE WITH ALL STATE AND LOCAL CODES.
- THE PLUMBING CONTRACTOR SHALL GUARANTEE THE COMPLETE PLUMBING SYSTEM TO BE FREE OF DEFECTS IN WORKMANSHIP AND MATERIALS FOR A PERIOD OF 12 MONTHS FROM DATE OF FINAL ACCEPTANCE.
- ALL WATER HEATER SUPPLY CONNECTIONS SHALL HAVE HEAT TRAP NIPPLE CONNECTIONS. HEAT TRAP NIPPLES NOT REQUIRED IF HOT WATER RECIRCULATION SYSTEM IS PROVIDED.
- NO HUB COUPLINGS SHALL BE HEAVY DUTY 4 BAND COUPLINGS WITH STAINLESS STEEL SHIELD.
- INSULATE CONCEALED ROOF DRAIN BODIES, VERTICAL LEAD AND HORIZONTAL PIPING WITH R-6 FLEXIBLE BLANKET INSULATION. EXPOSED ROOF DRAIN BODIES AND PIPES SHALL BE INSULATED WITH AN R-6 RIGID INSULATION AND PAINTABLE CANVAS JACKET.

PLUMBING SYSTEM SECTION 15400

THE WORK INCLUDES PROVIDING NEW MATERIALS, FITTINGS, AND ACCESSORIES NECESSARY FOR A COMPLETE FUNCTIONING PLUMBING SYSTEM. THE WORK ALSO INCLUDES ROUGH-IN AND FINAL CONNECTIONS TO FOOD SERVICE EQUIPMENT PROVIDED BY OTHERS. ALL WORK SHALL BE IN ACCORDANCE WITH LOCAL CODES AND/OR ORDINANCES AND IS SUBJECT TO INSPECTION.

CONNECTION CHARGES, PERMITS AND ALL OTHER EXPENSES RELATED TO A COMPLETE AND FUNCTIONING PLUMBING SYSTEM ARE INCLUDED AS A PART OR THIS SECTION.

THE INTENT OF THE DRAWINGS IS TO INDICATE THE GENERAL EXTENT OF WORK REQUIRED FOR THE PROJECT. THE DRAWINGS FOR PLUMBING WORK ARE DIAGRAMMATIC, SHOWING THE GENERAL LOCATION, TYPE, FIXTURES AND EQUIPMENT REQUIRED. THE DRAWINGS SHALL NOT BE SCALED FOR EXACT MEASUREMENTS. REFER TO MANUFACTURER'S STANDARD ROUGH-IN DRAWINGS FOR PLUMBING FIXTURE INSTALLATION REQUIREMENTS. COMPLY WITH ALL APPLICABLE ADA INSTALLATION REQUIREMENTS.

COORDINATE WITH THE WORK OF OTHER SECTIONS, EQUIPMENT FURNISHED BY OTHERS, AND WITH THE CONSTRAINTS OF THE EXISTING CONDITIONS ON THE PROJECT SITE.

SUBMITTALS
COORDINATE WITH DIVISION 1 FOR SUBMITTAL TIMETABLE REQUIREMENTS, UNLESS NOTED OTHERWISE WITHIN THIRTY (30) DAYS AFTER THE CONTRACT IS AWARDED THE CONTRACTOR SHALL SUBMIT A MINIMUM OF ONE ELECTRONIC COPY IN A PORTABLE DIGITAL FORMAT (PDF) COMPLETE WITH TABLE OF CONTENTS AND BOUND SETS OF SHOP DRAWINGS AND COMPLETE DATA COVERING EACH ITEM OF EQUIPMENT OR MATERIAL. THE FIRST SUBMITTAL OF EACH ITEM REQUIRING A SUBMITTAL MUST BE RECEIVED BY THE ARCHITECT OR ENGINEER WITHIN THE ABOVE THIRTY DAY PERIOD. THE ARCHITECT OR ENGINEER SHALL NOT BE RESPONSIBLE FOR ANY DELAYS OR COSTS INCURRED DUE TO EXCESSIVE SHOP DRAWING REVIEW TIME FOR SUBMITTALS RECEIVED AFTER THE THIRTY (30) DAY TIME LIMIT. THE ARCHITECT AND ENGINEER WILL RETAIN A COPY OF ALL SHOP DRAWINGS FOR THEIR FILES. WHERE FULL SIZE DRAWINGS ARE INVOLVED, SUBMIT ONE (1) PRINT IN LIEU OF ELECTRONIC COPIES. ALL LITERATURE PERTAINING TO AN ITEM SUBJECT TO SHOP DRAWING SUBMITTAL SHALL BE SUBMITTED AT ONE TIME. A SUBMITTAL SHALL NOT CONTAIN INFORMATION FROM MORE THAN ONE SPECIFICATION SECTION, BUT MAY HAVE A SECTION SUBDIVIDED INTO ITEMS OR EQUIPMENT AS LISTED IN EACH SECTION. THE CONTRACTOR MAY ELECT TO SUBMIT EACH ITEM OR TYPE OF EQUIPMENT SEPARATELY.

PIPING SYSTEMS - GENERAL: ALL PIPING SHALL BE RUN PARALLEL TO BUILDING LINES AND SUPPORTED AND ANCHORED AS REQUIRED TO FACILITATE EXPANSION AND CONTRACTION. ALL PIPING SHALL BE CONCEALED EXCEPT IN UNFINISHED SPACES. INSTALL AS REQUIRED TO MEET ALL CONSTRUCTION CONDITIONS AND TO ALLOW FOR INSTALLATION OF OTHER WORK SUCH AS DUCTS AND ELECTRICAL CONDUIT. AT ALL CONNECTIONS BETWEEN FERROUS PIPING AND NONFERROUS PIPING, PROVIDE AN ISOLATING DIELECTRIC UNION. ALL HANGERS SHALL BE COMPATIBLE WITH PIPING MATERIAL TO PREVENT CORROSION.

PROVIDE ALL FITTINGS, ACCESSORIES, OFFSETS, AND MATERIALS NECESSARY TO FACILITATE THE PLUMBING SYSTEM'S FUNCTIONING AS INDICATED BY THE DESIGN AND THE EQUIPMENT INDICATED.

SEWER/WASTE PIPING: SANITARY DRAINAGE PIPING ABOVE FLOOR SHALL BE HUBLESS CAST IRON, PVC PIPE WHERE ACCEPTED BY CODE, FITTINGS AND CONNECTIONS. SANITARY DRAINAGE PIPING BELOW GRADE SHALL BE SCHEDULE 40 PVC WITH SOVENT WELD JOINTS AND FITTINGS. ALL DRAINAGE PIPING SHALL BE UNIFORMLY PITCHED, 1/4" PER FOOT FOR SIZES 3" AND SMALLER AND 1/8" PER FOOT FOR PIPE SIZES 4" AND LARGER.

VENTS: PROVIDE A COMPLETE SYSTEM OF STANDARD WEIGHT CAST IRON. DO NOT USE DWV PLASTIC IN RETURN AIR PLENUM SPACES. THE VENT SYSTEM SHALL BE CARRIED THROUGH THE ROOF WITH APPROPRIATE FLASHING.

CONDENSATE AND INDIRECT DRAIN PIPING: TYPE M COPPER TUBING UP TO 1" ID, TYPE DWV TUBING AND FITTINGS FOR 1-1/4" AND LARGER SIZES.

CLEANOUTS: PROVIDE CLEANOUTS AT THE END OF EACH HORIZONTAL RUN, AND AT THE BASE OF ALL VERTICAL WASTE AND DRAIN PIPES. CLEANOUTS SHALL BE OF THE SAME SIZE AS THE PIPES THEY SERVE. CONFORM TO CODE REQUIREMENTS. PROVIDE SUITABLE WALL OR FLOOR CLEANOUTS WITH ACCESSORIES TO OBSCURE FROM VIEW.

WATER DISTRIBUTION PIPING: LAYOUT WATER PIPING SO THAT THE ENTIRE SYSTEM CAN BE DRAINED. HOT AND COLD WATER PIPING SHALL BE 1/2" MIN. TYPE L COPPER TUBING WITH WROUGHT COPPER FITTINGS AND SWEAT CONNECTIONS OR PEX IF ALLOWABLE BY LOCAL JURISDICTION. PROVIDE WATER HAMMER ARRESTORS AT EACH FIXTURE STOP. INSTALL CHROME PLATED BRASS ESCUTCHEON PLATES AT ALL PENETRATIONS THROUGH FINISHED SURFACES (INCLUDING CABINET INTERIORS). USE TIN-ANTIMONY SOLDER, 95/5 FOR ALL SWEAT FITTINGS OF COPPER PIPING.

PIPE INSULATION: INSULATE ALL HOT AND COLD WATER PIPING, ROOF DRAIN BODIES AND HORIZONTAL ROOF DRAIN PIPES WITH A THERMAL INSULATION HAVING AN R-VALUE OF 4 OR GREATER. INSULATION SHALL HAVE A K FACTOR OF 0.23 AT 75 DEGREES F. PROVIDE PRE-FORMED FIBERGLASS, ASJ-VB, FLAME SPREAD 25, SMOKE DEVELOPED 50, ASTM C-547. OR PROVIDE WHERE PERMITTED BY LOCAL CODES. 1" SELF-ADHESIVE CLOSED CELL FOAM PIPE INSULATION WITH PRE-FORMED PVC FITTING COVERS. EQUAL TO SELF-ADHESIVE ARMACELL'S AP ARMAFLEX WITH K FACTOR OF 0.23 AT 75 DEGREES MEAN TEMPERATURE. INSULATE ANY EXPOSED CONDENSATE PIPING WITH WASTE TEMPERATURES BELOW 60 DEGREES F.

PROVIDE HEAT TRAPS AT HOT AND COLD WATER CONNECTIONS TO WATER HEATER. SHUTOFF VALVES, WITH UNIONS SHALL BE PROVIDED FOR SERVICE TO EACH PLUMBING FIXTURE, FOOD SERVICE EQUIPMENT ITEM OR OTHER EQUIPMENT ITEM, TO FACILITATE ISOLATION FOR REPAIR OR REPLACEMENT. VALVES SHALL BE EQUAL TO NIBCO NO. T-585-70-66 BALL VALVE, BRONZE BODY, S.S. BALL AND STEM, TEFLON SEATS AND WELDING, 600 LB. W.O.G., THREADED UNION END.

ACCESS PANELS SHALL BE PROVIDED WHERE CONCEALED CONTROL DEVICES, VALVES, ETC. ARE CONCEALED WITHIN WALLS. WHERE ACCESS FOR ADJUSTMENT AND MAINTENANCE IS POSSIBLE THROUGH LAY-IN SUSPENDED CEILINGS, ACCESS PANELS ARE NOT REQUIRED.


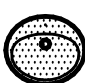

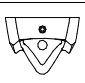

SUPPLIES AND TRAPS: PROVIDE WATER SEALED TRAPS AND/OR SUPPLIES INSTALLED AS CLOSE AS POSSIBLE TO ALL PLUMBING FIXTURES, DRAINS, AND FOOD SERVICE EQUIPMENT OR BEVERAGE DISPENSING EQUIPMENT ITEMS FURNISHED BY OTHERS, HAVING A WASTE CONNECTION, OR REQUIRING WATER SERVICE. EXPOSED TRAPS AND SUPPLIES IN EXPOSED AREAS (INCLUDING CABINET INTERIORS) SHALL BE CHROMIUM PLATED BRASS, WITH CHROME PLATED BRASS NUTS AND CHROME PLATED BRASS ESCUTCHEON PLATES. PROVIDE HUBLESS CAST IRON WASTE PIPING AND FITTINGS FOR THE TWO, THREE AND, FOUR COMPARTMENT SINKS. REMOVE MARKINGS FROM ALL PIPING WHEN INSTALLATION IS COMPLETE.

INSTALLATION: THOROUGHLY CLEAN ITEMS BEFORE INSTALLATION. CAP PIPE OPENINGS TO EXCLUDE DIRT UNTIL FIXTURES ARE INSTALLED AND FINAL CONNECTIONS HAVE BEEN MADE. PROCEED AS RAPIDLY AS CONSTRUCTION WILL PERMIT. SET ALIGNMENT WITH FIXTURES. INSTALL SILICONE SEALANT BETWEEN FIXTURES AND ADJACENT MATERIAL, FOR SANITARY JOINT, AND OMIT ESCUTCHEONS.

REPAIR EXISTING PLUMBING SYSTEM COMPONENTS DAMAGED BY CONSTRUCTION OPERATIONS AND RESTORE TO ORIGINAL CONDITIONS.

TEST WATER SYSTEM UNDER 150 PSIG HYDROSTATIC PRESSURE, FOR FOUR (4) HOURS MINIMUM. WHEN TESTING INDICATES MATERIALS OR WORKMANSHIP IS DEFICIENT, REPLACE OR REPAIR AS REQUIRED, AND REPEAT TEST UNTIL STANDARDS ARE ACHIEVED.

SHOP DRAWINGS: CONTRACTORS TO PROVIDE SIX SETS OF SHOP DRAWING SUBMITTALS FOR REVIEW AND APPROVAL TO ARCHITECT, OWNER, ARCHITECT, AND ENGINEER (WHEN APPLICABLE) TO RETAIN ONE SET FOR THEIR OWN RECORDS.

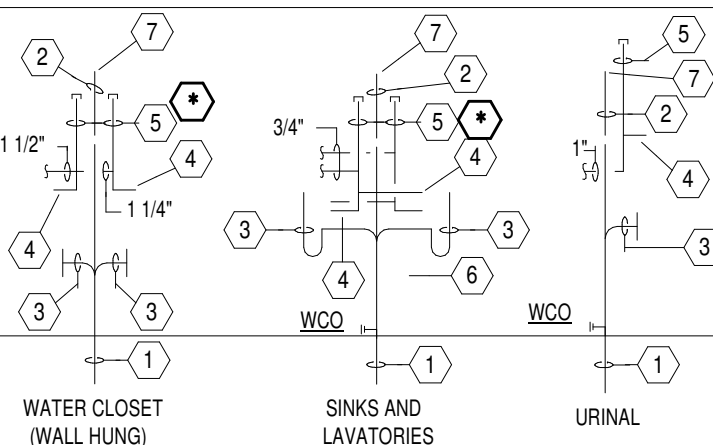
PLUMBING FIXTURE SCHEDULE							
	REFER TO ARCHITECTURAL TAS/ADA SHEETS AND TAS/ADA REGULATIONS FOR MOUNTING HEIGHTS AND CLEARANCES.						
SYMB.	PLAN MARK	MINIMUM ROUGH-IN SIZES					DESCRIPTION
		WST & VENT	DRAIN	CW	HW		
	LAVATORY LV1 (COUNTER MOUNT) 	2"	1-1/2"	1-1/4"	1/2"	1/2"	AMERICAN STANDARD NO. 0476.028 "AQUALYN" SELF RIMMING LAVATORY: TAS COMPLIANT, WHITE, V.C., FRONT OVERFLOW 4" O.C. TAPPINGS; FAUCET: CLEAN AND REINSTALL EXISTING FAUCET; WASTE: 1-1/4" 17 GA C.P. BRASS OFFSET TAILPIECE WITH GRID STRAINER, 1-1/4" 17 GA BRASS C.P. ADJ. "P"-TRAP W/C.O., ESCUTCHEON; SUPPLY: C.P. ANGLE SUPPLIES W/STOPS, 3/8" FLEX TUBE RISERS, ESCUTCHEONS; PROVIDE TRUEBRO 103 EZ SERIES INSULATION KIT ON EXPOSED PIPING. REFER TO ARCHITECTURAL DRAWINGS FOR MOUNTING HEIGHT.
	URINAL UR1 	2"	2"	1-1/2"	3/4"	----	KOHLER No. K-4991-ET "BARDON" URINAL: TAS COMPLIANT, WASH-OUT, V.C., WHITE, WALL HUNG, 3/4" TOP SPUD, 0.125 GAL. FLUSH, 14" LIP, MOUNT AT 17" A.F.F. TO TOP OF LIP; SLOAN ROYAL NO.186-0.5-SFSM FLUSH VALVE: SENSOR ACTIVATED, BATTERY OPERATED, 0.5 GPF, DIAPHRAGM TYPE, EXPOSED, C.P., 3/4" VACUUM BREAKER TOP SPUD, MANUAL OVERRIDE; ZURN ZR-1222 C.I. WALL CARRIER: C.I., FLOOR MOUNTED.

PLUMBING EQUIPMENT SCHEDULE							
SYMB.	PLAN MARK	MINIMUM ROUGH-IN SIZES				DESCRIPTION	
		WST & VENT	DRAIN	CW	HW		
	WALL CLEANOUT WCO	SEE PLAN	SEE PLAN	SEE PLAN	----	----	ZURN NO. ZS1469-7-VP ROUND STAINLESS STEEL ACCESS COVER COMPLETE WITH SECURING SCREW, MIN 5" DIA.. PROVIDE CLEANOUT PLUG TO MATCH PIPE MATERIAL.
○	WATER HAMMER ARRESTOR WHA	SEE DETAIL	SEE DETAIL	SEE DETAIL	----	----	SIOUX CHIEF 650 SERIES WATER HAMMER ARRESTOR: TYPE L COPPER TUBE, POLY PISTON WITH TWO EPDM O-RINGS, ASSE 1010 CERT., MAX. 250°F, MAX. 350 PSIG, LEAD FREE, INSTALL TO MANUFACTURES SPECIFICATIONS.

PLUMBING PIPE MATERIALS SCHEDULE	
PIPING SYSTEM	PIPING MATERIAL
SANITARY SEWER BELOW GRADE	SCHEDULE 40 DWV PVC
SANITARY DRAIN AND VENTS ABOVE GRADE	SCHEDULE 40 DWV PVC *
DOMESTIC HOT & COLD WATER BELOW GRADE	COPPER, TYPE "K" SOFT
DOMESTIC HOT & COLD WATER ABOVE GRADE	COPPER, TYPE "L" HARD DRAWN
HOT AND COLD WATER PIPE INSULATION	1" RIGID FIBER GLASS
* SCHEDULE 40 DWV PVC SHALL NOT BE USED IN RETURN AIR PLENUMS. WHERE CEILING PLENUMS ARE USED FOR RETURN AIR, CONTRACTOR SHALL ONLY USE BELL AND SPIGOT SERVICE WEIGHT CAST IRON PIPE.	

GENERAL ENERGY NOTES:						
INSULATION SHALL BE PROVIDED FOR PIPING AS NOTED IN THE TABLE BELOW. PIPING INSULATION SHALL BE PROVIDED FOR RETURN CIRCULATION HOT WATER SYSTEM WITH 1" OR R-4 INSULATION. THE FIRST 8' OF PIPING IN NONCIRCULATING SYSTEMS SERVED BY EQUIPMENT W/O INTEGRAL HEAT TRAPS SHALL BE INSULATED WITH 1-1/2" OR R-4 INSULATION.						
WATER HEATING EQUIPMENT NOT SUPPLIED WITH INTEGRAL HEAT TRAPS AND SERVING NONCIRCULATING SYSTEMS SHALL BE PROVIDED WITH HEAT TRAPS ON THE SUPPLY AND DISCHARGE PIPING AS ASSOCIATED WITH THE EQUIPMENT.						
AUTOMATIC CIRCULATING HOT WATER SYSTEMS OR HEAT TRACE SHALL HAVE TIME SWITCHES THAT ARE CAPABLE OF BEING SET TO TURN OFF THE SYSTEM.						
MINIMUM PIPE INSULATION THICKNESS (in inches)						
FLUID	CONDUCTIVITY	MEAN TEMP °F	NORMINAL PIPE DIA.			
			< 1"	1 < 1.5"	1.5" TO < 4"	4 TO < 8"
DOM. COLD WATER	0.23	75	1/2	1	1	1
HOT WATER	0.24	100	1	1	1-1/2	1-1/2

PLUMBING RISER DETAILS



KEYED NOTES - RISER DIAGRAM DETAILS:

- 1 REFER TO PLUMBING FIXTURE SCHEDULE FOR SOIL OR WASTE ROUGH-IN PIPE SIZE. MINIMUM SOIL OR WASTE DRAIN LINE SIZE (EXCEPT AS NOTED) FOR THIS FIXTURE.
- 2 REFER TO PLUMBING FIXTURE SCHEDULE FOR SANITARY VENT ROUGH-IN PIPE SIZE. MINIMUM SANITARY VENT BRANCH SIZE (EXCEPT AS NOTED) FOR THIS FIXTURE.
- 3 REFER TO PLUMBING FIXTURE SCHEDULE FOR FIXTURE DRAIN ROUGH-IN PIPE SIZE. MINIMUM FIXTURE DRAIN AND TRAP SIZE FOR THIS FIXTURE.
- 4 REFER TO PLUMBING FIXTURE SCHEDULE FOR WATER PIPING ROUGH-IN PIPE SIZE. MINIMUM WATER SUPPLY BRANCH SIZE (EXCEPT AS NOTED) FOR THIS FIXTURE.
- 5 SHOCK ARRESTOR INLET. REFER TO SHOCK ARRESTOR SCHEDULE FOR SIZE. LOCATION SHOWN HERE FOR INDIVIDUAL FIXTURE WILL VARY WHERE INCLUDED AS PART OF PLUMBING CHASE BATTERY OF PIPING. REFER TO RISER DIAGRAMS FOR BATTERY LOCATIONS. ARRANGE ALL WATER LINES TO GRAVITY DRAIN.
- 6 WALL CLEANOUTS SHALL BE PROVIDED AT END OF BATTERY OR END OF BRANCH LINE FIXTURES AND WHERE REQUIRED BY PLUMBING CODE OFFICIALS TO ASSURE COMPLETE ACCESS TO ALL PORTIONS OF DRAIN.
- 7 SANITARY VENT PIPES SHALL CONTINUE TO CEILING OR HEADER TOGETHER AT A MINIMUM 42" ABOVE FIN. FLOOR.

11/08/2023





5656 S. STAPLES, SUITE 360,
CORPUS CHRISTI, TX 78411
P - 361.852.2727 F - 361.852.2922
TEXAS ENGINEERING FIRM NO. 005318

23219



TEXAS A&M UNIVERSITY - CORPUS CHRISTI
CCH BATHROOMS
6300 OCEAN DRIVE, CORPUS CHRISTI, TX. 78412

KEY PLAN
TURNER | RAMIREZ ARCHITECTS
3751 S. ALAMEDA ST.
CORPUS CHRISTI, TX 78411
p (361)994-8900
www.trarch.com

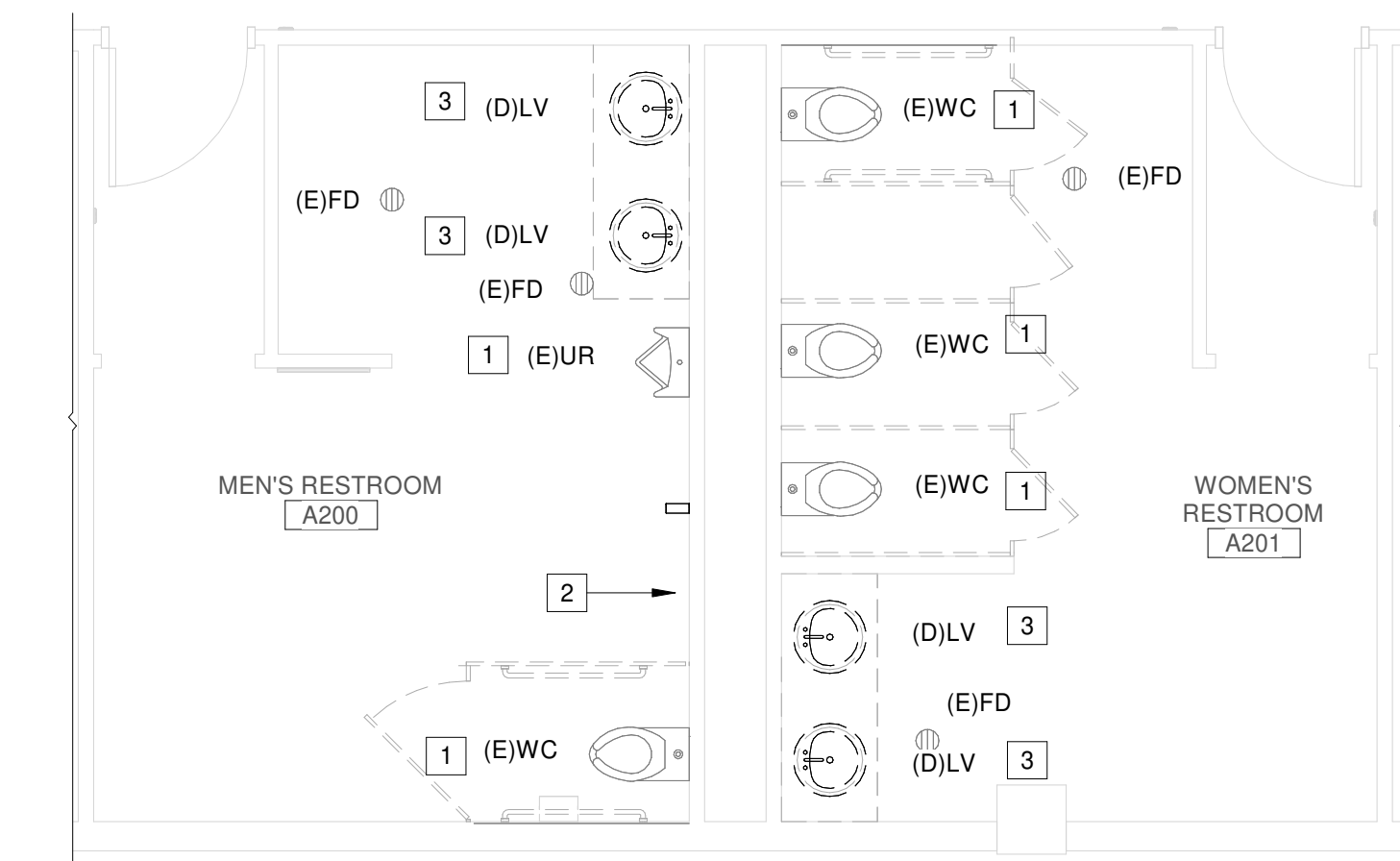
DATE: 11/08/2023		
REV.	DESCRIPTION	DATE
PROJECT ISSUE DATE: 11/08/2023		
PHASE:		PROJECT STATUS
DRAWN BY:		KMS
CHECKED BY:		SMR
PROJECT NUMBER:		2023-33
SHEET IDENTIFICATION		

PLUMBING
SPECIFICATIONS

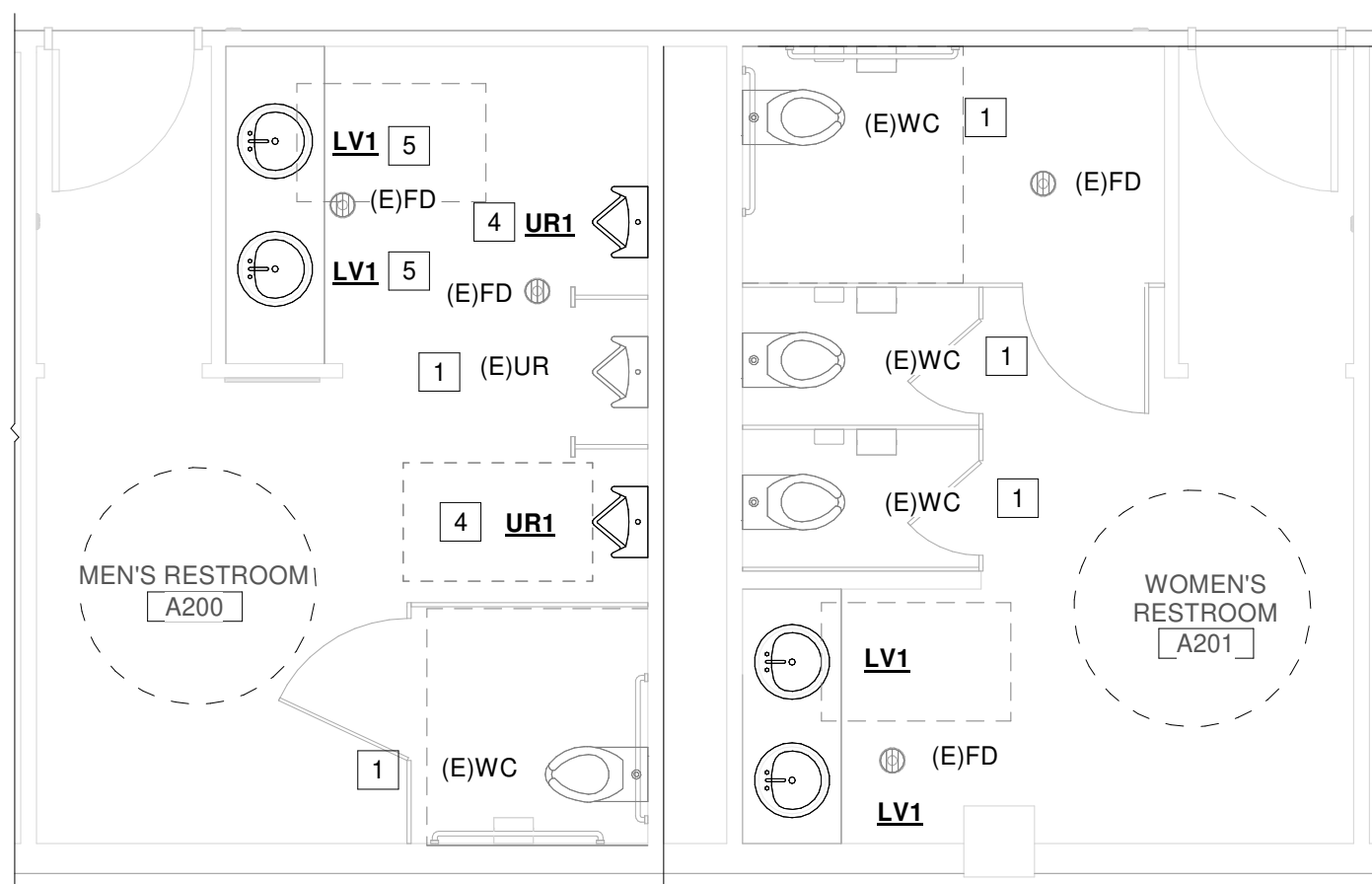
P0.1



TEXAS A&M UNIVERSITY - CORPUS CHRISTI
CCH BATHROOMS
63300 OCEAN DRIVE, CORPUS CHRISTI, TX. 78412



1 PLUMBING DEMO FLOOR PLAN
1/4" = 1'-0"



② PLUMBING FLOOR PLAN
1/4" = 1'-0"

PLUMBING GENERAL NOTES:

1. CONTRACTOR SHALL VERIFY ALL DIMENSIONS AND EXISTING CONDITIONS AT THE JOB SITE BEFORE COMMENCING ANY PHASE OF THE WORK. ADJUSTMENTS FOR FIT AND COORDINATION SHALL BE MADE AT NO ADDITIONAL COST TO THE OWNER. NOTIFY ENGINEER OF ANY CONFLICTS, DISCREPANCIES OR OMISSIONS PRIOR TO COMMENCEMENT OF THE CONTRACT WORK.
2. CONTRACTOR SHALL REVIEW ALL ARCHITECTURAL, MECHANICAL, & STRUCTURAL DRAWINGS AND SPECIFICATIONS FOR ANY ADDITIONAL REQUIREMENTS.
3. CONTRACTOR SHALL COORDINATE HIS WORK WITH OTHER TRADES.
4. SEAL ALL WALL, ROOF, AND FLOOR PENETRATIONS WITH UL LISTED FIRE SEALANT.
5. PLUMBING CONTRACTOR TO FIELD COORDINATE WITH STRUCTURAL. ROUTE SANITARY LINES OUT AND AWAY FROM BEAMS WHERE POSSIBLE AND CROSS BEAMS PERPENDICULAR WITH SLEEVES AS REQUIRED.
6. REMOVE AND CAP ABOVE CEILING LEVEL ALL DOMESTIC WATER AND VENT PIPING LOCATED IN WALLS THAT ARE TO BE DEMOLISHED.
7. WHERE PLUMBING FIXTURES ARE TO BE REMOVED AND RELOCATED OR REPLACED, THE CONTRACTOR SHALL CUT AND REPAIR EXISTING WALLS, FLOORS, AND CEILINGS AS NECESSARY TO MATCH NEW CONDITIONS.

PLUMBING KEY NOTES:

- 1 EXISTING FIXTURE TO REMAIN. PROTECT DURING RENOVATION. CLEAN AND CAULK IF NEEDED.
- 2 REMOVE EXISTING WATER CLOSET CARRIER AND REVISE PIPING FOR NEW URINAL.
- 3 REMOVE EXISTING LAVATORY AND APPURTENANCES. CLEAN AND STORE ELECTRONIC FAUCET AND POWER SUPPLY FOR REINSTALLATION.
- 4 INSTALL NEW FIXTURE AS SCHEDULED. CONNECT TO EXISTING WASTE AND WATER IN WALL.
- 5 INSTALL NEW LAVATORY AS SCHEDULED. CONNECT TO NEAREST WASTE, VENT, HOT, AND COLD WATER. REINSTALL STORED FAUCET AND POWER SUPPLY.


KEY PLAN

TURNER | RAMIREZ ARCHITECTS
3751 S. ALAMEDA ST.
CORPUS CHRISTI, TX 78411
p (361)994-8900

www.trarch.com

11/08/2023

DATE: 11/08/2023



NRG
ENGINEERING
 5656 S. STAPLES, SUITE 360,
 CORPUS CHRISTI, TX 78411
 P - 361.852.2727 F - 361.852.2922
 TEXAS ENGINEERING FIRM NO.
 005318

23219

REV.	DESCRIPTION	DATE
PROJECT ISSUE DATE:	11/08/2023	
PHASE:	PROJECT STATUS	
DRAWN BY:	KMS	
CHECKED BY:	SMR	
PROJECT NUMBER:	2023-33	
SHEET IDENTIFICATION		

PLUMBING FLOOR PLANS

P1.0