



## Environmental Inspection Report

---

**August 20, 2019**

**FIVE-STORY OFFICE BUILDING  
223 NORTH CHAPARRAL STREET  
CORPUS CHRISTI, TEXAS**

**Prepared for:**

**SSC SERVICES FOR EDUCATION**

**Prepared by:**

**ENVIROTEST, LLC  
5233 IH 37 SUITE A-3  
CORPUS CHRISTI, TEXAS 78408  
(361) 887-9400**

**ENVIROTEST PROJECT NUMBER: 14386**

**HOUSTON • CORPUS CHRISTI**



August 20, 2019

Mr. Jim Eckhart  
SCC Services for Education  
6300 Ocean Drive, Unit 5870  
Corpus Christi, TX 78412

**RE: Limited Asbestos Inspection**  
**223 North Chaparral Street**  
**Corpus Christi, TX 78401**  
**Envirotest Project Number: 14386**

Dear Mr. Eckhart:

Enclosed is the report for the environmental inspection performed at 223 North Chaparral Street in Corpus Christi, TX. The inspection was performed August 5 and 6, 2019 by Mr. Wayne Pflughaupt of Envirotest, LLC. Mr. Pflughaupt is licensed by the Texas Department of State Health Services as an Asbestos Inspector (#60-3090).

#### **SCOPE OF WORK**

The scope of this project was limited to suspect asbestos and lead containing materials associated with the five-story building at the above reference property. Eighty-nine (89) samples of suspect asbestos materials and three (3) samples of suspect lead-containing paint were collected.

#### **Lead Result Summary**

Paint sampling was conducted in accordance with commonly accepted commercial and professional standard practices for similar assignments. The intent of the project was to collect a random sampling of painted surfaces that may contain elevated levels of lead. Visually discernable painted surface coatings associated with the above-referenced building were sampled on three floors for lead content.

The State of Texas defines lead-based paint as having  $\geq 1.0$  mg/cm as measured by XRF or laboratory analysis, or  $\geq 5,000$  parts per million (ppm) lead,  $\geq 0.5\%$  lead by weight, or  $\geq 5000$  mg/kg concentration, as measured by laboratory analysis. All samples collected were below the regulatory limit for being considered lead containing paint.

#### **HOUSTON • CORPUS CHRISTI**



### **Asbestos Result Summary**

Suspect asbestos-containing materials (ACM) were collected according to protocol established by the *Texas Asbestos Health Protection Rules (TAPHR) 295.34 (c)* for building demolitions and renovations. During the inspection, sampled materials were assigned a sample number and a homogenous area number. Samples were collected of each area and the friability and condition of the suspect material was assessed. Samples of the following materials were found to contain greater than one percent (>1%) asbestos:

- 1) Black Floor Tile Mastic with Residual Floor Tile (Level 4)
- 2) Residual Black Floor Tile Mastic (Level 2)
- 3) Residual Black Floor Tile Mastic (Mezzanine Under Carpet)
- 4) Elevator Brake Shoes (Penthouse)
- 5) Residual Black Floor Tile Mastic (Level 1 Shipping Area and Business Interiors Suite)

Window glaze compound samples collected in the southeast stairwell, and windowpane caulk collected in the penthouse were found to contain less than one percent (< 1%) asbestos by approved laboratory analytical methods. In the State of Texas, a material must contain greater than one percent (> 1%) asbestos to be considered a regulated material. **Based upon EPA and Texas DSHS (Department of State Health Services) regulations, the glaze compound and caulk is not defined as an asbestos-containing material by rule, is not regulated by DSHS, and does not require abatement prior to the demolition or renovation of the existing structure.**

However, OSHA regulations regarding asbestos fiber exposure to workers does apply to materials containing less than one percent (< 1%) asbestos. The OSHA regulation requires each employer to determine the proper respiratory protection for employees, based upon reliable air monitoring data. Each employer should evaluate the respiratory hazards based upon their own health and safety programs, which are developed to comply with the current OSHA respiratory requirements. Envirotest recommends wet methods, engineering controls during demolition activities, and employee air monitoring to determine proper respiratory protection when dealing with materials containing less than one percent (< 1%) asbestos.

### **Sampled Materials Data**

Tables 1 and 2 contain the homogenous area numbers, material types, material descriptions, material locations, condition assessments, and a summary of the analytical results for asbestos. A list of definitions can be found following the text of this report. Table 3 associates homogenous paint descriptions, locations, and a summary of the analytical results. The complete laboratory analytical results for asbestos and paint film samples are listed in separate laboratory documents following the text of this report.



### **RECOMMENDATIONS - LEAD-BASED PAINT**

One of the three (3) paint samples collected was found to contain lead approaching, but not over, regulatory limits. Sample #P1 was found to contain 0.417% lead by weight. The definition of lead containing paint is 0.5% lead by weight. It would be advisable, but not required by regulations, for workers disturbing this paint material to have proper training according to state and federal regulations. According to OSHA regulations, employers are also required to provide proper respiratory protection to all workers exposed to lead-containing dust. This exposure level is unique to the material disturbed and the methods used during the removal process.

### **RECOMMENDATIONS - ASBESTOS**

Recommendations concerning the asbestos-containing materials (ACM) identified in this limited inspection are based on the following:

1. Condition
2. Friability
3. Potential for disturbance

#### **Condition and Friability**

The asbestos-containing materials are in good condition and considered non-friable.

#### **Response Actions for Renovation**

According to *NESHAP 40 CFR 61 Subpart M, 61.145* and *Texas Asbestos Health Protection Rules, 295.60*, friable or potentially friable ACM which will be disturbed during renovation, or has the potential to be disturbed, must be removed. A licensed asbestos consultant should be consulted prior to any renovation operations in a building or other structure containing ACM. The project must be designed by a DSHS (Department of State Health Services) licensed asbestos consultant and monitored by a DSHS licensed company.

#### **Use of Licensed Contractors**

According to the *Texas Asbestos Health Protection Rules, 295.34*, the removal of asbestos in projects covered by the regulations require asbestos abatement specifications to be written by a DSHS (Department of State Health Services) licensed asbestos consultant and air monitoring be performed by a DSHS licensed air monitoring firm. In addition, a DSHS licensed asbestos abatement contractor must perform the removal.

### **ANALYTICAL METHODS**

Asbestos and lead analyses were performed at SanAir Technologies Laboratories Inc. laboratory in Powhatan, VA. SanAir is an American Industrial Hygiene Association accredited laboratory (#162952), a National Institute of Standards and Technology NVLAP-accredited laboratory (#200870) and licensed by the Texas Department of

### **HOUSTON • CORPUS CHRISTI**



State Health Services (#30-0440) for asbestos laboratory analysis. Phase contrast microscopy (PLM) lab analyses of asbestos samples was performed using standard oil immersion and optical staining techniques. Lead-based paint film lab analyses were performed via the EPA Method SW-846 M3050B/7000B, using flame atomic absorption .

#### **LIMITATIONS**

This sampling report does not guarantee that additional asbestos-containing materials or lead-containing materials are not present. The scope of this project was limited to the materials sampled within this report. Areas such as, but not limited to, beneath large furniture items in storage on levels 5, 4, 3, and 2, beneath existing flooring, inside walls, inside doors, interior of ductwork, interior of mechanical or other equipment, interior of piping flanges/valves, interior of electrical components, behind all non-movable finish materials, and all other portions of the building not designated in the Scope of Work were specifically excluded and not sampled for the presence of asbestos or paint.

The following analytical results pertain to only the samples analyzed and may not reflect the actual composition of the entire homogeneous area. Envirotest, LLC assumes no responsibility for any subsequent use or interpretations of these analytical results. This report must not be used to claim product endorsement by NVLAP or any other state or federal government agency.

Please call us if you have any questions regarding this inspection report. We appreciate the opportunity to be of service to you.

Sincerely,

Alex Fuhrmann  
Asbestos Consultant (#10-5629)  
Envirotest, LLC

Wayne Pflughaupt  
Asbestos Inspector (#60-3090)  
Envirotest, LLC

#### **HOUSTON • CORPUS CHRISTI**



### **List of Asbestos Definitions**

Asbestos-Containing Material (ACM) - any material containing more than one percent asbestos (chrysotile, amosite, crocidolite, tremolite asbestos, anthophyllite asbestos, actinolite asbestos).

Demolition - the wrecking or taking out of any load-supporting structure member and any related razing, removing, or stripping of asbestos products.

Disturbance - contact which releases fibers from ACM or debris containing ACM including activities which that disrupts the matrix of ACM, render ACM friable, or generate visible debris.

Encapsulation - a method of control of asbestos fibers in which the surface of ACM is penetrated by or covered with a liquid coating prepared for that purpose.

Enclosure - the construction of an airtight, impermeable, semi-permanent barrier surrounding asbestos to prevent the release of asbestos fibers into the air.

Fiber - a particulate form of asbestos, 5 micrometers or longer, with a length-to diameter ratio of at least 3 to 1.

Friable Materials - any material that when dry can be crumbled, pulverized, or reduced to powder by hand pressure.

Homogeneous Area - an area of surfacing material or thermal system that is uniform in color and texture.

Intact - means that the ACM has not crumbled, been pulverized, or otherwise deteriorated so that it is no longer likely to be bound with its matrix.

Removal - all operations where ACM is taken out or stripped from structures or substrates, and includes demolition operations.

Renovation - the modifying of any existing structure, or portion thereof.

Repair - overhauling, rebuilding, reconstructing, or reconditioning of structures or substrates, including encapsulation or other repair of ACM attached to structures or substrates.

---

### **HOUSTON • CORPUS CHRISTI**

CORPUS CHRISTI OFFICE: 5233 IH 37 Suite A-3 • Corpus Christi, Texas 78408 • Voice 361.887.9400 • Fax 361.887.9401 • [www.envirotestllc.com](http://www.envirotestllc.com)



**Tables I, II, III**

**Sample Location Diagram**

**Asbestos Polarized Light Microscopy Laboratory Analytical Results**

**Lead in Paint Laboratory Analytical Results**

**HOUSTON • CORPUS CHRISTI**



**TABLE I – ASBESTOS SAMPLE MATERIAL SUMMARY**  
**223 North Chaparral Street, Corpus Christi, TX 78401**

H.A.*	MATERIAL NAME	MATERIAL DESCRIPTION	MATERIAL LOCATION	CONDITION	FRIABLE	ASBESTOS-CONTAINING MATERIAL
1	Window Glaze Compound	White Chalky Putty	Southeast Stairwell Entrance Windows	Good	No	No
2	Plaster Lath with Skim Coat	Gray Cementitious Material with White Lime and Plaster Composite Matrix	Level 5 Walls	Damaged	No	<b>YES</b>
3	Air Handler Cork Insulation Adhesive	Hard Brown Adhesive	Level 5 East Mechanic Room Abandoned Air Handler	Damaged	No	No
4	Window Caulk	White Chalky Putty	Penthouse North Window	Good	No	No
5	Wire Insulation	Hard Gray Woven Fabric	Penthouse, Bundled Electrical Wire from Floor Feeding Elevator Control Panel	Good	No	No
6	Fire Hose	White Woven Fibrous Cloth	Levels 5, 4, 3	Good	No	No
7	Plaster Lath with Skim Coat	Gray Cementitious Material with White Lime and Plaster Composite Matrix	Level 4 Ceiling	Damaged	No	No
8	Drywall	White Chalky Gypsum Board	Above H.A. #7	Damaged	Yes	No

**HOUSTON • CORPUS CHRISTI**





**TABLE I – ASBESTOS SAMPLE MATERIAL SUMMARY**  
**223 North Chaparral Street, Corpus Christi, TX 78401**

H.A.*	MATERIAL NAME	MATERIAL DESCRIPTION	MATERIAL LOCATION	CONDITION	FRIABLE	ASBESTOS-CONTAINING MATERIAL
9	Plaster Lath with Skim Coat	Gray Cementitious Material with White Lime and Plaster Composite Matrix	Level 4 Walls	Damaged	No	No
10	Black Mastic with Residual Floor Tile	Black Bituminous Material with Dark Brown Tile, Size Undetermined	Level 4 Floor Throughout, Excluding Restrooms	Good	No	<b>YES (Tile and Mastic)</b>
11	Plaster Lath with Skim Coat	Gray Cementitious Material with White Lime and Plaster Composite Matrix	Level 3 Ceiling	Good	No	No
12	Drywall	White Chalky Gypsum Board	Above H.A. #11	Good	Yes	No
13	Plaster Lath with Skim Coat	Gray Cementitious Material with White Lime and Plaster Composite Matrix	Level 3 Walls	Good	No	No
14	Drywall	White Chalky Gypsum Board	Level 3 Storage Units Walls	Good	Yes	No
15	Joint Compound	Dried White Gypsum Mud	Level 3 Storage Units Walls	Good	Yes	No
16	Plaster Lath with Skim Coat	Gray Cementitious Material with White Lime and Plaster Composite Matrix	Level 2 Ceiling	Good	No	No

**HOUSTON • CORPUS CHRISTI**



**TABLE I – ASBESTOS SAMPLE MATERIAL SUMMARY**  
**223 North Chaparral Street, Corpus Christi, TX 78401**

H.A.*	MATERIAL NAME	MATERIAL DESCRIPTION	MATERIAL LOCATION	CONDITION	FRIABLE	ASBESTOS-CONTAINING MATERIAL
17	Drywall	White Chalky Gypsum Board	Above H.A. #16	Good	Yes	No
18	Plaster Lath with Skim Coat	Gray Cementitious Material with White Lime and Plaster Composite Matrix	Level 2 Walls	Good	No	No
19	Drywall	White Chalky Gypsum Board	Level 2 Built-Out Walls	Good	Yes	No
20	Joint Compound	Dried White Gypsum Mud	Level 2 Built-Out Walls	Good	Yes	No
21	Residual Floor Tile Mastic	Black Bituminous Material	Level 2 Floor Southeast Area	Good	No	<b>YES</b>
22	Carpet Mastic	Yellow Resinous Adhesive	Level 2 Northeast Office	Good	No	No
23	Elevator Brake	Gray Material	Penthouse Elevators	Good	No	<b>YES</b>
24	Plaster Lath with Skim Coat	Gray Cementitious Material with White Lime and Plaster Composite Matrix	Mezzanine Air Handler Room, Level 1 Walls and Partial Ceiling	Good	No	No
25	Drywall	White Chalky Gypsum Board	Mezzanine Short West Wall	Good	Yes	No

**HOUSTON • CORPUS CHRISTI**



**TABLE I – ASBESTOS SAMPLE MATERIAL SUMMARY**  
**223 North Chaparral Street, Corpus Christi, TX 78401**

H.A.*	MATERIAL NAME	MATERIAL DESCRIPTION	MATERIAL LOCATION	CONDITION	FRIABLE	ASBESTOS-CONTAINING MATERIAL
26	Joint Compound	Dried White Gypsum Mud	Mezzanine Short West Wall	Good	Yes	No
27	Carpet Mastic	Green Sticky Adhesive with Residual Black Bituminous Adhesive	Mezzanine Floor	Good	No	<b>YES (Black Mastic)</b>
28	Drywall	White Chalky Gypsum Board	Level 1 Built-Out Walls	Good	Yes	No
29	Joint Compound	Dried White Gypsum Mud	Level 1 Built-Out Walls	Good	Yes	No
30	Carpet Mastic	Sticky Green Adhesive with Yellow Resinous Adhesive	Level 1 Wittigs Office Interiors Suite	Good	No	No
31	Carpet Mastic	Yellow Resinous Adhesive with Residual Black Bituminous Adhesive	Level 1 Business Office Interiors Suite	Good	No	<b>YES (Black Mastic)</b>
32	Residual Black Floor Tile Mastic	Black Bituminous Adhesive	Level 1 Shipping / Receiving	Good	No	<b>YES</b>
33	Sink Dampener	White Resinous Undercoat	Level 1 Business Office Interiors Kitchen	Good	No	No

\* Homogeneous Area

**HOUSTON • CORPUS CHRISTI**



**TABLE II: ASBESTOS SAMPLE NUMBER ↔ HOMOGENEOUS AREA**  
**223 North Chaparral Street, Corpus Christi, TX 78401**

SAMPLE #	H.A.*	SAMPLE LOCATION
1	1	Level 5 Southeast Stairwell Entrance
2	1	Level 3 Southeast Stairwell Entrance
3	1	Level 2 Southeast Stairwell Entrance
4	2	Level 5 Northeast Stairwell
5	2	Level 5 Northwest Stairwell
6	2	Level 5 Northwest Corridor
7	3	Level 5 East Mechanic Room
8	3	Level 5 East Mechanic Room
9	3	Level 5 East Mechanic Room
10	4	Penthouse North Window
11	5	Penthouse Elevator Switch Panel
12	6	Level 4 Exterior Wall of Southeast Stairwell
13	7	Level 4 East Area
14	7	Level 4 Southeast Area
15	7	Level 4 South Area
16	8	Level 4 East Area
17	8	Level 4 Southeast Area
18	8	Level 4 South Area
19	9	Level 4 Northwest Window Ledge
20	9	Level 4 Northwest Corridor
21	9	Level 4 Exterior Corner of Southwest Stairwell
22	10	Level 4 Southeast Area
23	10	Level 4 South Area
24	10	Level 4 Northeast Area
25	11	Level 3 North Area
26	11	Level 3 Air Handler Room 305
27	11	Level 3 Southwest Area
28	12	Level 3 North Area
29	12	Level 3 Air Handler Room 305
30	12	Level 3 Southwest Area
31	13	Level 3 Southwest Area
32	13	Level 3 from Northwest Window Ledge
33	13	Level 3 Northwest Area

**HOUSTON • CORPUS CHRISTI**



**TABLE II: ASBESTOS SAMPLE NUMBER ↔ HOMOGENEOUS AREA**  
**223 North Chaparral Street, Corpus Christi, TX 78401**

SAMPLE #	H.A.*	SAMPLE LOCATION
34	14	Level 3 Storage Room 309 at Exterior Light Switch
35	14	Level 3 Air Handler Room 305
36	14	Level 3 Storage Room 303
37	15	Level 3 Storage Room 309 at Exterior Light Switch
38	15	Level 3 Air Handler Room 305
39	15	Level 3 Storage Room 303
40	16	Level 2 Northwest Corridor
41	16	Level 2 Northwest Area
42	16	Level 2 Women's Restroom
43	17	Level 2 Northwest Corridor
44	17	Level 2 Northwest Area
45	17	Level 2 Women's Restroom
46	18	Level 2 Southwest Stairwell Entrance
47	18	Level 2 Northwest Area
48	18	Level 2 Northwest Corridor
49	19	Level 2 Southwest Exterior Corner of North Build-Out
50	19	Level 2 South Exterior Corner of South Build-Out
51	19	Level 2 Office Northeast Corner
52	20	Level 2 Southwest Exterior Corner of North Build-Out
53	20	Level 2 South Exterior Corner of South Build-Out
54	20	Level 2 Office Northeast Corner
55	21	Level 2 Southeast Area
56	21	Level 2 Southeast Area
57	21	Level 2 Southeast Area
58	22	Level 2 Outer Office
59	22	Level 2 Outer Office
60	22	Level 2 Outer Office
61	23	Penthouse
62	24	Mezzanine Air Handler Room
63	24	Mezzanine Air Handler Room
64	24	Mezzanine Air Handler Room
65	25	Mezzanine Southwest Corner
66	25	Mezzanine West Area

**HOUSTON • CORPUS CHRISTI**



**TABLE II: ASBESTOS SAMPLE NUMBER ↔ HOMOGENEOUS AREA**  
**223 North Chaparral Street, Corpus Christi, TX 78401**

SAMPLE #	H.A.*	SAMPLE LOCATION
67	25	Mezzanine North Area
68	26	Mezzanine Southwest Corner
69	26	Mezzanine West Area
70	26	Mezzanine North Area
71	27	Mezzanine Southwest Corner
72	27	Mezzanine Southeast Area
73	27	Mezzanine Air Handler Room
74	28	Level 1 Wittigs Suite at Column Near Entrance
75	28	Level 1 Business Interiors Suite, Corner Outside Training Room
76	28	Level 1 Business Interiors Suite, Corner Outside Kitchen
77	29	Level 1 Wittigs Suite at Column Near Entrance
78	29	Level 1 Business Interiors Suite, Corner Outside Training Room
79	29	Level 1 Business Interiors Suite, Corner Outside Kitchen
80	30	Level1 Wittigs Suite North Area
81	30	Level1 Wittigs Suite South Area
82	30	Level Wittigs Suite East
83	31	Level 1 Business Interiors Suite, Corner Outside Training Room
84	31	Level 1 Business Interiors Suite, Corner Outside Kitchen
85	31	Level 1 Business Interiors Suite, Outside Office
86	32	Level 1 Shipping / Receiving Area
87	32	Level 1 Shipping / Receiving Area
88	32	Level 1 Shipping / Receiving Area
89	33	Level 1 Business Interiors Suite Kitchen

\* = Homogeneous Area

**HOUSTON • CORPUS CHRISTI**

CORPUS CHRISTI OFFICE: 5233 IH 37 Suite A-3 • Corpus Christi, Texas 78408 • Voice 361.887.9400 • Fax 361.887.9401 • [www.envirotellc.com](http://www.envirotellc.com)



**TABLE III: LEAD PAINT SAMPLE MATERIAL SUMMARY**  
**223 North Chaparral Street, Corpus Christi, TX 78401**

SAMPLE #	SAMPLE LOCATION	PAINT COLOR LAYER DESCRIPTION	LEAD CONCENTRATION ppm	LEAD CONCENTRATION % by weight
P1	Level 4 East Central Structural Column	White / Gray /tan	4174	0.417
P2	Level 3 West Wall North of Southwest Stairwell	White	2110	0.211
P3	Level 5 South Elevator Wall	Yellow / Pink	1156	0.116

EPA, HUD, and Texas Standards for being considered lead containing paint are:

1.0 mg/cm<sup>2</sup>-X-ray fluorescence (XRF)

≥ 5,000 parts per million (ppm)

≥ 5000 mg/kg concentration

≥ 0.5% by weight

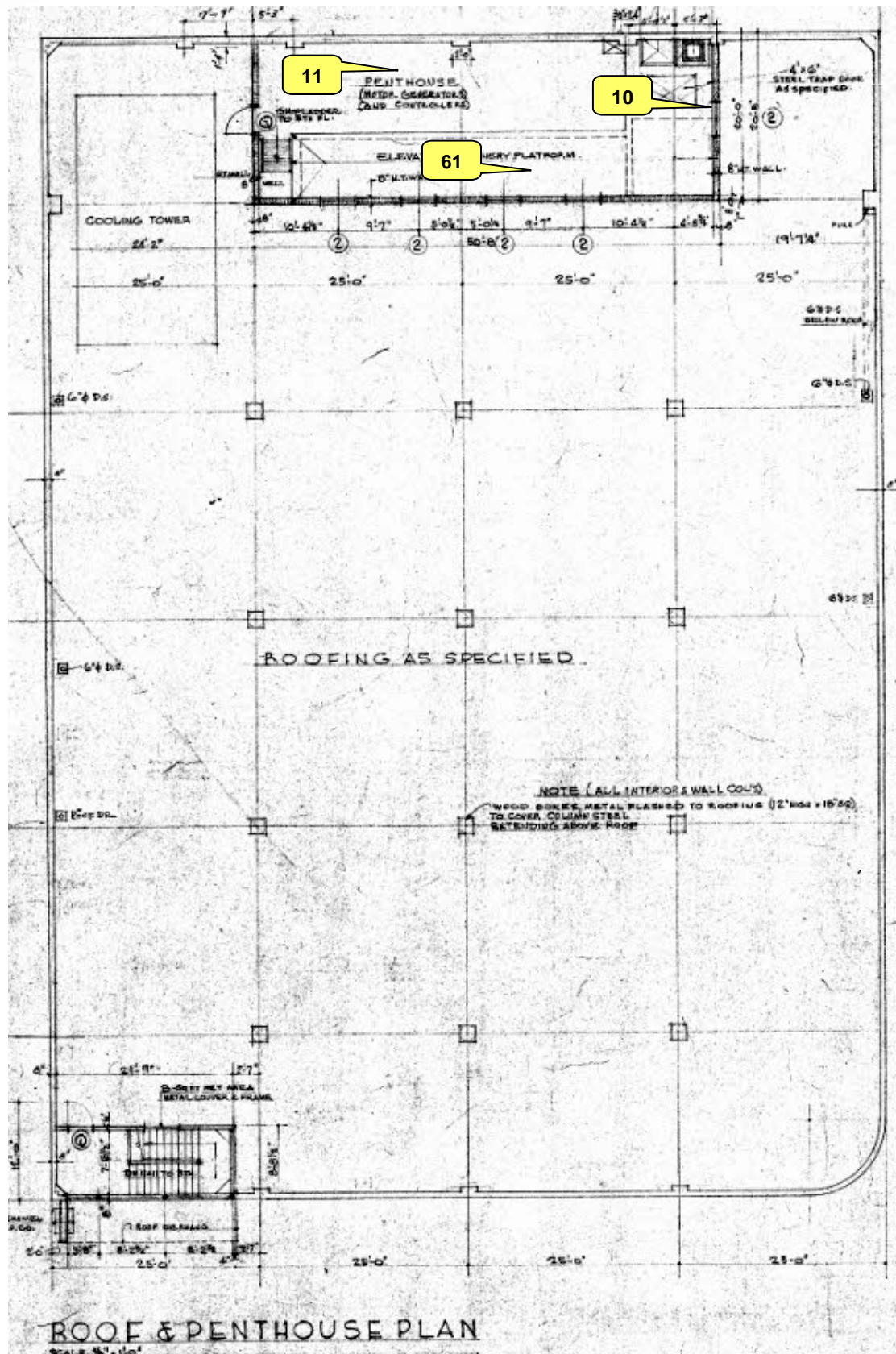
< RL = Less than the Reporting Limit of 125 mg/kg

## HOUSTON • CORPUS CHRISTI



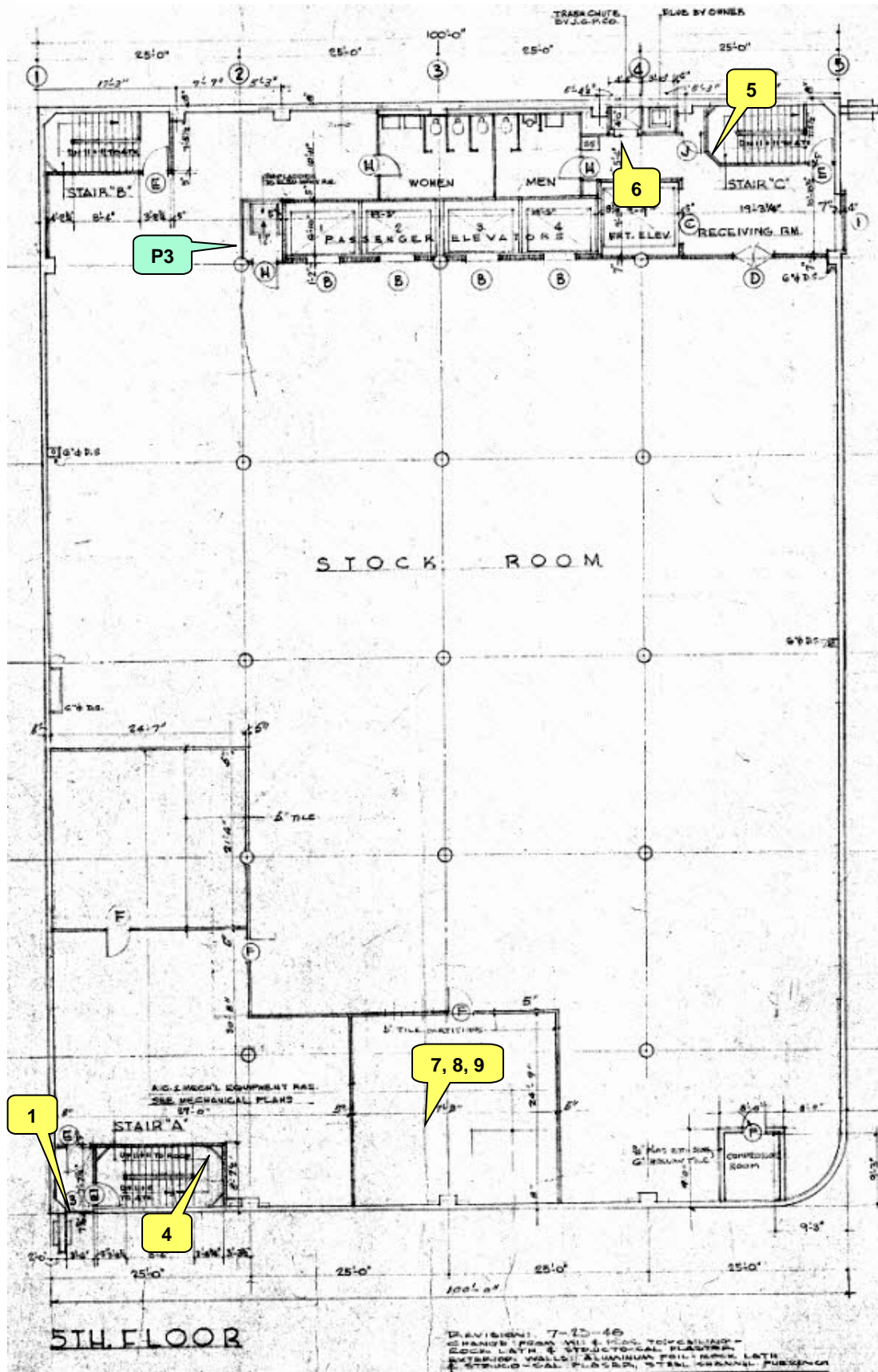


## Asbestos Sample Location Diagram – Penthouse

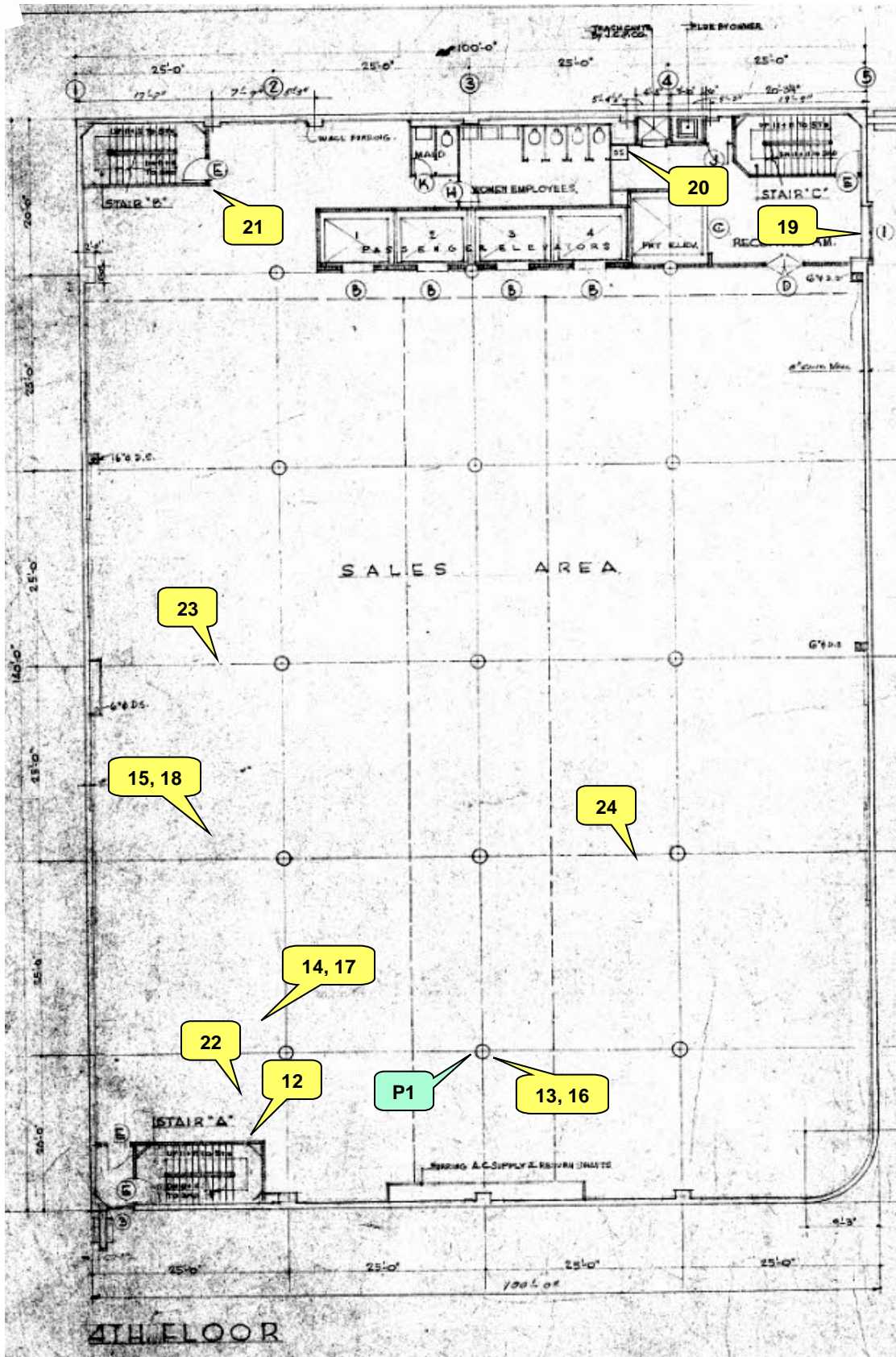




# Asbestos and Paint Sample Location Diagram – Level 5



# Asbestos and Paint Sample Location Diagram – Level 4



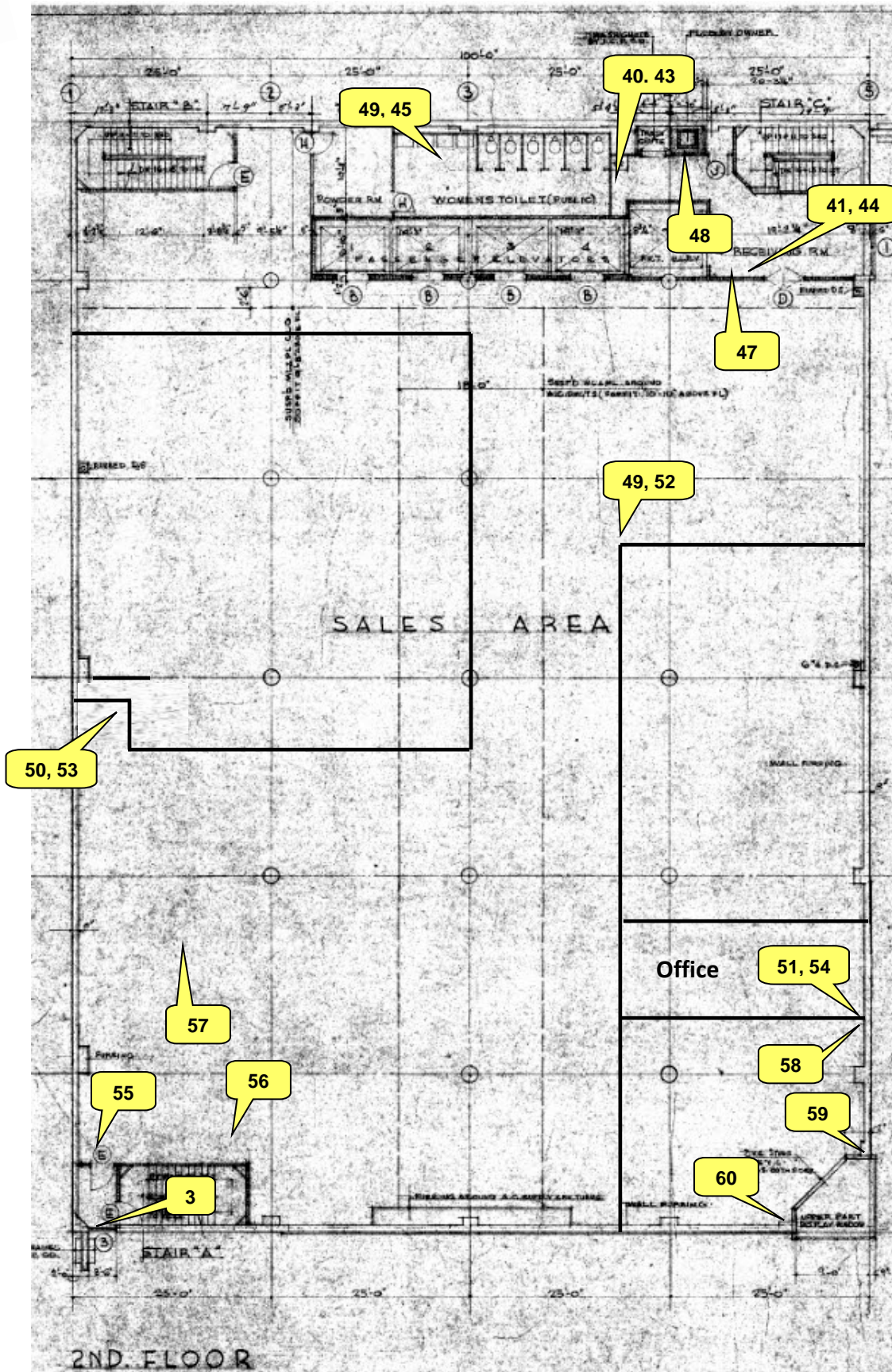








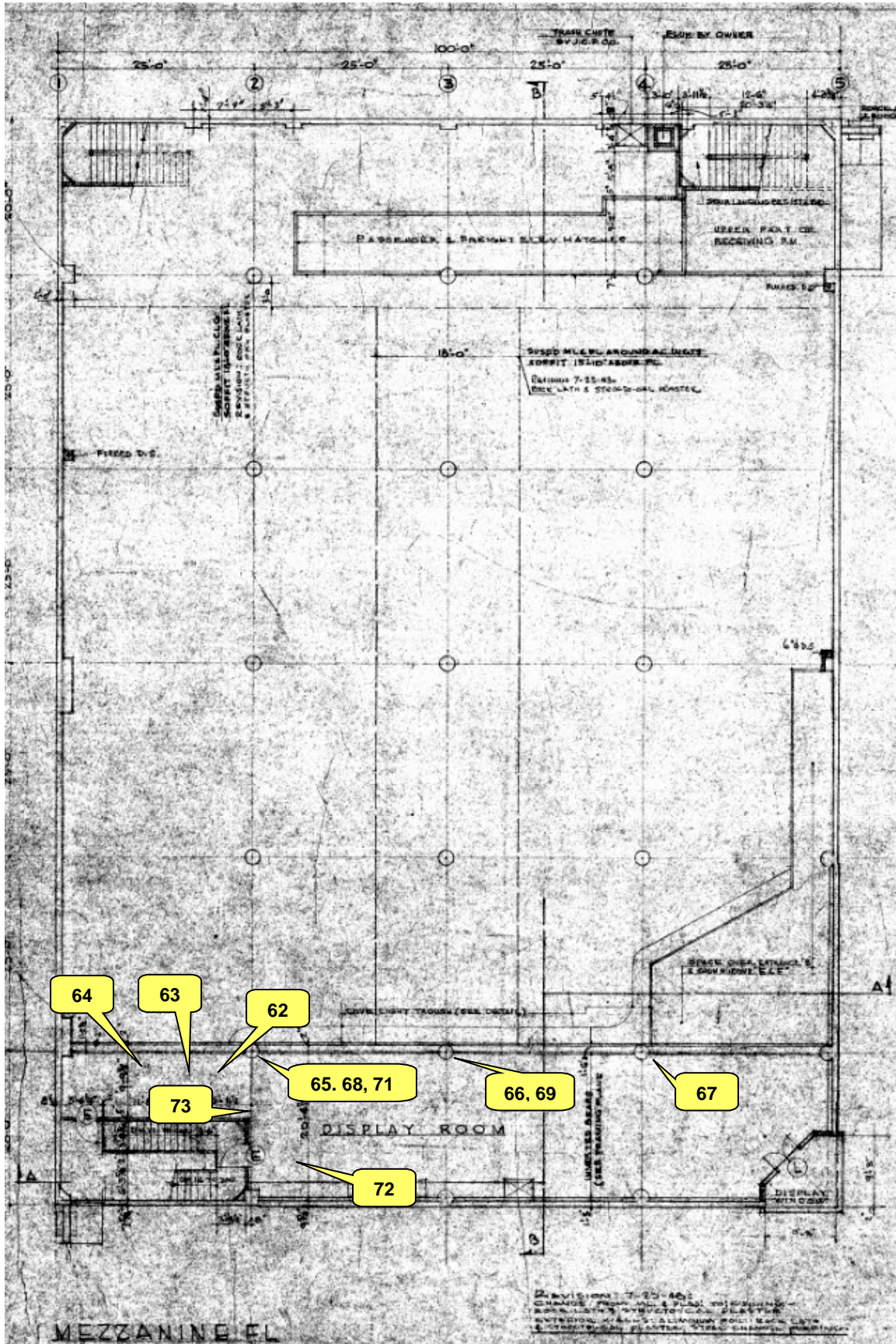
## Asbestos Sample Location Diagram – Level 2



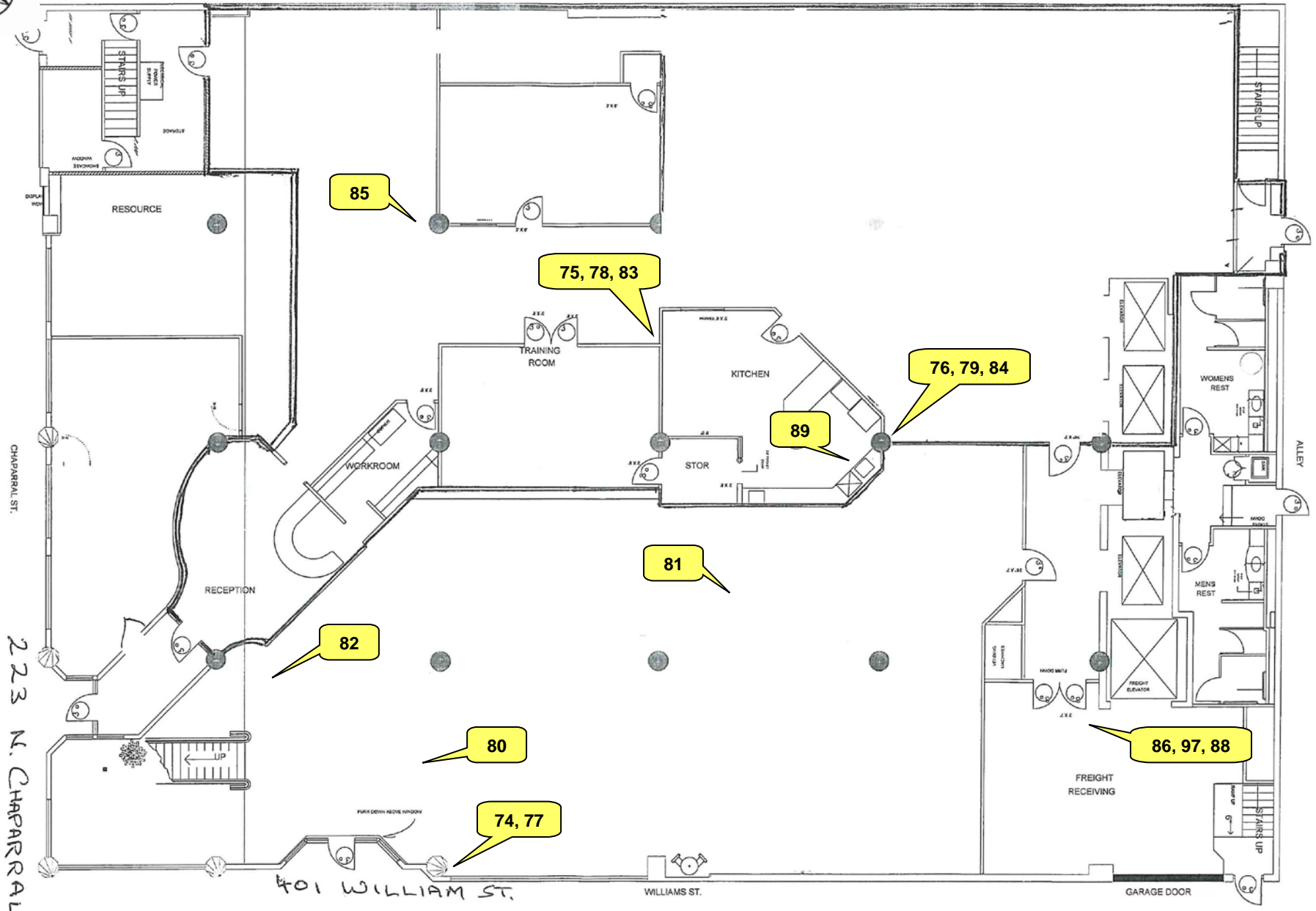




## Asbestos Sample Location Diagram – Mezzanine



# Asbestos Sample Location Diagram – Level 1





**The Identification Specialists**

Analysis Report  
prepared for  
Envirotest, LLC

**Report Date: 8/19/2019**

**Project Name: Amended:Five Story Office Bld**

**Project #: 14386**

**SanAir ID#: 19039965**



1551 Oakbridge Dr. Suite B | Powhatan, Virginia 23139-8061  
888.895.1177 | 804.897.1177 | fax: 804.897.0070 | [IAQ@SanAir.com](mailto:IAQ@SanAir.com) | [SanAir.com](http://SanAir.com)



SanAir ID Number

19039965

FINAL REPORT

8/19/2019 3:32:23 PM

**Name:** Envirotec, LLC  
**Address:** 1525 S. Broadway  
St. Louis, MO 63104  
**Phone:** 713-782-4411

**Project Number:** 14386

**P.O. Number:**

**Project Name:** Amended:Five Story Office Bld

**Collected Date:** 8/5/2019 - 8/6/2019

**Received Date:** 8/9/2019 9:55:00 AM

Dear Sir or Madam,

We at SanAir would like to thank you for the work you recently submitted. The 3 sample(s) were received on Friday, August 09, 2019 via FedEx. The final report(s) is enclosed for the following sample(s): P1, P2, P3.

These results only pertain to this job and should not be used in the interpretation of any other job. This report is only complete in its entirety. Refer to the listing below of the pages included in a complete final report.

Sincerely,

A handwritten signature in black ink that reads "Abisola Kasali".

Abisola Kasali  
Metals Laboratory Director  
SanAir Technologies Laboratory

Final Report Includes:

- Cover Letter
- Analysis on Test Family AA
- Disclaimers and Additional Information

Sample conditions:

- 3 samples in Good condition.





SanAir ID Number

19039965

FINAL REPORT

8/19/2019 3:32:23 PM

**Name:** Envirotest, LLC**Address:** 1525 S. Broadway

St. Louis, MO 63104

**Phone:** 713-782-4411**Project Number:** 14386**P.O. Number:****Project Name:** Amended:Five Story Office Bld**Collected Date:** 8/5/2019 - 8/6/2019**Received Date:** 8/9/2019 9:55:00 AM

Analyst: Ortega, David

Test Method: SW846/M3050B/7000B

## Lead Paint Analysis

PAINT Sample	Description	$\mu\text{g Pb}$ In Sample	Sample Size (grams)	Calculated RL	Sample Results	Sample Results
19039965 - 1	P1 Level 4 White/ Gray/ Tan	435	0.1041	96.1	4174 $\mu\text{g/g (ppm)}$	0.417 % By Weight
19039965 - 2	P2 Level 2 White	240	0.1136	88	2110 $\mu\text{g/g (ppm)}$	0.211 % By Weight
19039965 - 3	P3 Level 5 Yellow/ Pink	129	0.1116	89.6	1156 $\mu\text{g/g (ppm)}$	0.116 % By Weight

Method Reporting Limit <10  $\mu\text{g}/0.1\text{ g}$  paint

Amended: Revised Project Name to Five Story Bld. AOK 8/19/19.

Signature:

Date: 8/12/2019

Reviewed:

Date: 8/12/2019



**Name:** Envirotest, LLC  
**Address:** 1525 S. Broadway  
St. Louis, MO 63104  
**Phone:** 713-782-4411

SanAir ID Number  
**19039965**  
FINAL REPORT  
8/19/2019 3:32:23 PM

**Project Number:** 14386  
**P.O. Number:**  
**Project Name:** Amended:Five Story Office Bld  
**Collected Date:** 8/5/2019 - 8/6/2019  
**Received Date:** 8/9/2019 9:55:00 AM

### **Disclaimer**

SanAir Technologies Laboratory, Inc. participates in the Environmental Lead Accreditation Program (ELAP) administered by AIHA-LAP, LLC (Lab ID162952). Refer to our accreditation certificate or [www.aihaaccreditedlabs.org](http://www.aihaaccreditedlabs.org) for an up to date list of the Fields of Testing for which we are accredited. SanAir also participates in the State of New York's DOH-ELAP (Lab Id 11983), and has met the EPA's NLLAP program standards.

Final reports cannot be reproduced, except in full, without written authorization from SanAir Technologies Laboratory, Inc. SanAir is not responsible for sample collection or interpretation made by others. This report does not constitute endorsement by AIHA-LAP, LLC and/or any other U.S. governmental agencies; and may not be accredited by every local, state or federal regulatory agency. SanAir Technologies Laboratory, Inc only assures the precision and accuracy of the data it generates and assumes no responsibility for errors or biasing that occur during collection prior to SanAir's receipt of the sample(s). SanAir's Method Detection Limits (MDL) and Reporting Limits (RL) have been derived using various materials meeting each accrediting agency's standards. All quality control results are acceptable unless otherwise noted. Results are not corrected for blanks.

### **Lead Exposure Limits**

#### **Paint**

0.5% by weight	HUD definition of lead based paint
1.0 mg/cm <sup>2</sup>	
5000 ppm	



**The Identification Specialists**

Analysis Report  
prepared for  
Envirotest, LLC

**Report Date: 8/16/2019**

**Project Name: Five Story Office Building**

**Project #: 14386**

**SanAir ID#: 19039959**



NVLAP LAB CODE 200870-0

1551 Oakbridge Dr. Suite B | Powhatan, Virginia 23139-8061  
888.895.1177 | 804.897.1177 | fax: 804.897.0070 | [IAQ@SanAir.com](mailto:IAQ@SanAir.com) | [SanAir.com](http://SanAir.com)



SanAir ID Number

19039959

FINAL REPORT

8/16/2019 4:27:44 PM

**Name:** Envirotech, LLC  
**Address:** 1525 S. Broadway  
St. Louis, MO 63104  
**Phone:** 713-782-4411

**Project Number:** 14386  
**P.O. Number:**  
**Project Name:** Five Story Office Building  
**Collected Date:** 8/5/2019 - 8/6/2019  
**Received Date:** 8/9/2019 9:55:00 AM

Dear Wayne Pflughaupt,

We at SanAir would like to thank you for the work you recently submitted. The 89 sample(s) were received on Friday, August 09, 2019 via FedEx. The final report(s) is enclosed for the following sample(s): 1, 2, 3, 4, 5, 6, 7, 8, 9, 10, 11, 12, 13, 14, 15, 16, 17, 18, 19, 20, 21, 22, 23, 24, 25, 26, 27, 28, 29, 30, 31, 32, 33, 34, 35, 36, 37, 38, 39, 40, 41, 42, 43, 44, 45, 46, 47, 48, 49, 50, 51, 52, 53, 54, 55, 56, 57, 58, 59, 60, 61, 62, 63, 64, 65, 66, 67, 68, 69, 70, 71, 72, 73, 74, 75, 76, 77, 78, 79, 80, 81, 82, 83, 84, 85, 86, 87, 88, 89.

These results only pertain to this job and should not be used in the interpretation of any other job. This report is only complete in its entirety. Refer to the listing below of the pages included in a complete final report.

Sincerely,

A handwritten signature in black ink that reads "Sandra Sobrino". The signature is written in a cursive, flowing style.

Sandra Sobrino  
Asbestos & Materials Laboratory Manager  
SanAir Technologies Laboratory

**Final Report Includes:**

- Cover Letter
- Analysis Pages
- Disclaimers and Additional Information

**Sample conditions:**

- 89 samples in Good condition.



SanAir ID Number

19039959

FINAL REPORT

8/16/2019 4:27:44 PM

**Name:** Envirotech, LLC  
**Address:** 1525 S. Broadway  
St. Louis, MO 63104  
**Phone:** 713-782-4411

**Project Number:** 14386**P.O. Number:****Project Name:** Five Story Office Building**Collected Date:** 8/5/2019 - 8/6/2019**Received Date:** 8/9/2019 9:55:00 AM

Analyst: Pisula, Nicholas

**Asbestos Bulk PLM EPA 600/R-93/116**

SanAir ID / Description	Stereoscopic	Components		Asbestos Fibers
	Appearance	% Fibrous	% Non-fibrous	
1 / 19039959-001 Window Glaze	Grey Non-Fibrous Homogeneous		100% Other	< 1% Chrysotile
2 / 19039959-002 Window Glaze	Grey Non-Fibrous Homogeneous		100% Other	< 1% Chrysotile
3 / 19039959-003 Window Glaze	Grey Non-Fibrous Homogeneous		100% Other	< 1% Chrysotile
4 / 19039959-004 Plaster Lath With Skim Coat, Plaster	Grey Non-Fibrous Homogeneous		100% Other	None Detected
4 / 19039959-004 Plaster Lath With Skim Coat, Skim Coat	White Non-Fibrous Homogeneous		100% Other	None Detected
5 / 19039959-005 Plaster Lath With Skim Coat, Plaster	Grey Non-Fibrous Homogeneous		100% Other	None Detected
5 / 19039959-005 Plaster Lath With Skim Coat, Skim Coat	White Non-Fibrous Homogeneous		100% Other	None Detected
6 / 19039959-006 Plaster Lath With Skim Coat, Plaster	Grey Non-Fibrous Homogeneous		100% Other	None Detected
6 / 19039959-006 Plaster Lath With Skim Coat, Skim Coat	White Non-Fibrous Homogeneous		100% Other	None Detected
7 / 19039959-007 Air Handler Cork Adhesive	Brown Non-Fibrous Homogeneous		100% Other	None Detected

Analyst:

Approved Signatory:

Analysis Date: 8/16/2019

Date: 8/16/2019



SanAir ID Number

19039959

FINAL REPORT

8/16/2019 4:27:44 PM

**Name:** Envirotech, LLC  
**Address:** 1525 S. Broadway  
St. Louis, MO 63104  
**Phone:** 713-782-4411

**Project Number:** 14386**P.O. Number:****Project Name:** Five Story Office Building**Collected Date:** 8/5/2019 - 8/6/2019**Received Date:** 8/9/2019 9:55:00 AM

Analyst: Pisula, Nicholas

**Asbestos Bulk PLM EPA 600/R-93/116**

SanAir ID / Description	Stereoscopic	Components		Asbestos Fibers
	Appearance	% Fibrous	% Non-fibrous	
8 / 19039959-008 Air Handler Cork Adhesive	Brown Non-Fibrous Homogeneous		100% Other	None Detected
9 / 19039959-009 Air Handler Cork Adhesive	Brown Non-Fibrous Homogeneous		100% Other	None Detected
10 / 19039959-010 Window Caulk	Grey Non-Fibrous Homogeneous		100% Other	< 1% Chrysotile
11 / 19039959-011 Wire Insulation	Brown Fibrous Homogeneous	95% Cellulose	5% Other	None Detected
12 / 19039959-012 Fire Hose	Tan Fibrous Homogeneous	95% Cellulose	5% Other	None Detected
13 / 19039959-013 Plaster Lath With Skim Coat, Plaster	Grey Non-Fibrous Homogeneous		100% Other	None Detected
13 / 19039959-013 Plaster Lath With Skim Coat, Skim Coat	White Non-Fibrous Homogeneous		100% Other	None Detected
14 / 19039959-014 Plaster Lath With Skim Coat, Plaster	Grey Non-Fibrous Homogeneous		100% Other	None Detected
14 / 19039959-014 Plaster Lath With Skim Coat, Skim Coat	White Non-Fibrous Homogeneous		100% Other	None Detected
15 / 19039959-015 Plaster Lath With Skim Coat, Plaster	Grey Non-Fibrous Homogeneous		100% Other	None Detected

Analyst:

Approved Signatory:

Analysis Date: 8/16/2019

Date: 8/16/2019



SanAir ID Number

19039959

FINAL REPORT

8/16/2019 4:27:44 PM

**Name:** Envirotest, LLC  
**Address:** 1525 S. Broadway  
St. Louis, MO 63104  
**Phone:** 713-782-4411

**Project Number:** 14386**P.O. Number:****Project Name:** Five Story Office Building**Collected Date:** 8/5/2019 - 8/6/2019**Received Date:** 8/9/2019 9:55:00 AM

Analyst: Pisula, Nicholas

**Asbestos Bulk PLM EPA 600/R-93/116**

SanAir ID / Description	Stereoscopic	Components		Asbestos Fibers
	Appearance	% Fibrous	% Non-fibrous	
15 / 19039959-015 Plaster Lath With Skim Coat, Skim Coat	White Non-Fibrous Homogeneous		100% Other	None Detected
16 / 19039959-016 Drywall	Grey Non-Fibrous Homogeneous	5% Cellulose	95% Other	None Detected
17 / 19039959-017 Drywall	Grey Non-Fibrous Homogeneous	5% Cellulose	95% Other	None Detected
18 / 19039959-018 Drywall	Grey Non-Fibrous Homogeneous	5% Cellulose	95% Other	None Detected
19 / 19039959-019 Plaster Lath With Skim Coat, Plaster	Grey Non-Fibrous Homogeneous		100% Other	None Detected
19 / 19039959-019 Plaster Lath With Skim Coat, Skim Coat	White Non-Fibrous Homogeneous		100% Other	None Detected
20 / 19039959-020 Plaster Lath With Skim Coat, Plaster	Grey Non-Fibrous Homogeneous		100% Other	None Detected
20 / 19039959-020 Plaster Lath With Skim Coat, Skim Coat	White Non-Fibrous Homogeneous		100% Other	None Detected
21 / 19039959-021 Plaster Lath With Skim Coat, Plaster	Grey Non-Fibrous Homogeneous		100% Other	None Detected
21 / 19039959-021 Plaster Lath With Skim Coat, Skim Coat	White Non-Fibrous Homogeneous		100% Other	None Detected

Analyst:

Approved Signatory:

Analysis Date: 8/16/2019

Date: 8/16/2019





SanAir ID Number

19039959

FINAL REPORT

8/16/2019 4:27:44 PM

**Name:** Envirotest, LLC  
**Address:** 1525 S. Broadway  
St. Louis, MO 63104  
**Phone:** 713-782-4411

**Project Number:** 14386**P.O. Number:****Project Name:** Five Story Office Building**Collected Date:** 8/5/2019 - 8/6/2019**Received Date:** 8/9/2019 9:55:00 AM

Analyst: Pisula, Nicholas

**Asbestos Bulk PLM EPA 600/R-93/116**

SanAir ID / Description	Stereoscopic	Components		Asbestos Fibers
	Appearance	% Fibrous	% Non-fibrous	
22 / 19039959-022 Floor Tile Mastic, Floor Tile	Black Non-Fibrous Homogeneous		95% Other	5% Chrysotile
22 / 19039959-022 Floor Tile Mastic, Mastic	Black Non-Fibrous Homogeneous		97% Other	3% Chrysotile
23 / 19039959-023 Floor Tile Mastic, Floor Tile	Black Non-Fibrous Homogeneous		95% Other	5% Chrysotile
23 / 19039959-023 Floor Tile Mastic, Mastic	Black Non-Fibrous Homogeneous		97% Other	3% Chrysotile
24 / 19039959-024 Floor Tile Mastic, Floor Tile	Black Non-Fibrous Homogeneous		95% Other	5% Chrysotile
24 / 19039959-024 Floor Tile Mastic, Mastic	Black Non-Fibrous Homogeneous		97% Other	3% Chrysotile
25 / 19039959-025 Plaster Lath With Skim Coat, Plaster	Grey Non-Fibrous Homogeneous		100% Other	None Detected
25 / 19039959-025 Plaster Lath With Skim Coat, Skim Coat	White Non-Fibrous Homogeneous		100% Other	None Detected
26 / 19039959-026 Plaster Lath With Skim Coat, Plaster	Grey Non-Fibrous Homogeneous		100% Other	None Detected
26 / 19039959-026 Plaster Lath With Skim Coat, Skim Coat	White Non-Fibrous Homogeneous		100% Other	None Detected

Analyst:

Approved Signatory:

Analysis Date: 8/16/2019

Date: 8/16/2019



SanAir ID Number

19039959

FINAL REPORT

8/16/2019 4:27:44 PM

**Name:** Envirotec, LLC  
**Address:** 1525 S. Broadway  
St. Louis, MO 63104  
**Phone:** 713-782-4411

**Project Number:** 14386**P.O. Number:****Project Name:** Five Story Office Building**Collected Date:** 8/5/2019 - 8/6/2019**Received Date:** 8/9/2019 9:55:00 AM

Analyst: Pisula, Nicholas

**Asbestos Bulk PLM EPA 600/R-93/116**

SanAir ID / Description	Stereoscopic	Components		Asbestos Fibers
	Appearance	% Fibrous	% Non-fibrous	
27 / 19039959-027 Plaster Lath With Skim Coat, Plaster	Grey Non-Fibrous Homogeneous		100% Other	None Detected
27 / 19039959-027 Plaster Lath With Skim Coat, Skim Coat	White Non-Fibrous Homogeneous		100% Other	None Detected
28 / 19039959-028 Drywall	Grey Non-Fibrous Homogeneous	5% Cellulose	95% Other	None Detected
29 / 19039959-029 Drywall	Grey Non-Fibrous Homogeneous	5% Cellulose	95% Other	None Detected
30 / 19039959-030 Drywall	Grey Non-Fibrous Homogeneous	5% Cellulose	95% Other	None Detected
31 / 19039959-031 Plaster Lath With Skim Coat, Plaster	Grey Non-Fibrous Homogeneous		100% Other	None Detected
31 / 19039959-031 Plaster Lath With Skim Coat, Skim Coat	White Non-Fibrous Homogeneous		100% Other	None Detected
32 / 19039959-032 Plaster Lath With Skim Coat, Plaster	Grey Non-Fibrous Homogeneous		100% Other	None Detected
32 / 19039959-032 Plaster Lath With Skim Coat, Skim Coat	White Non-Fibrous Homogeneous		100% Other	None Detected
33 / 19039959-033 Plaster Lath With Skim Coat, Plaster	Grey Non-Fibrous Homogeneous		100% Other	None Detected

Analyst:

Approved Signatory:

Analysis Date: 8/16/2019

Date: 8/16/2019



SanAir ID Number

19039959

FINAL REPORT

8/16/2019 4:27:44 PM

**Name:** Envirotech, LLC  
**Address:** 1525 S. Broadway  
St. Louis, MO 63104  
**Phone:** 713-782-4411

**Project Number:** 14386**P.O. Number:****Project Name:** Five Story Office Building**Collected Date:** 8/5/2019 - 8/6/2019**Received Date:** 8/9/2019 9:55:00 AM

Analyst: Pisula, Nicholas

**Asbestos Bulk PLM EPA 600/R-93/116**

SanAir ID / Description	Stereoscopic	Components		Asbestos Fibers
	Appearance	% Fibrous	% Non-fibrous	
33 / 19039959-033 Plaster Lath With Skim Coat, Skim Coat	White Non-Fibrous Homogeneous		100% Other	None Detected
34 / 19039959-034 Drywall	Grey Non-Fibrous Homogeneous	5% Cellulose	95% Other	None Detected
35 / 19039959-035 Drywall	Grey Non-Fibrous Homogeneous	5% Cellulose	95% Other	None Detected
36 / 19039959-036 Drywall	Grey Non-Fibrous Homogeneous	5% Cellulose	95% Other	None Detected
37 / 19039959-037 Joint Compound	White Non-Fibrous Homogeneous		100% Other	None Detected
38 / 19039959-038 Joint Compound	White Non-Fibrous Homogeneous		100% Other	None Detected
39 / 19039959-039 Joint Compound	White Non-Fibrous Homogeneous		100% Other	None Detected
40 / 19039959-040 Plaster Lath With Skim Coat, Plaster	Grey Non-Fibrous Homogeneous		100% Other	None Detected
40 / 19039959-040 Plaster Lath With Skim Coat, Skim Coat	White Non-Fibrous Homogeneous		100% Other	None Detected
41 / 19039959-041 Plaster Lath With Skim Coat, Plaster	Grey Non-Fibrous Homogeneous		100% Other	None Detected

Analyst:

Approved Signatory:

Analysis Date: 8/16/2019

Date: 8/16/2019



SanAir ID Number

19039959

FINAL REPORT

8/16/2019 4:27:44 PM

**Name:** Envirotect, LLC  
**Address:** 1525 S. Broadway  
St. Louis, MO 63104  
**Phone:** 713-782-4411

**Project Number:** 14386**P.O. Number:****Project Name:** Five Story Office Building**Collected Date:** 8/5/2019 - 8/6/2019**Received Date:** 8/9/2019 9:55:00 AM

Analyst: Pisula, Nicholas

**Asbestos Bulk PLM EPA 600/R-93/116**

SanAir ID / Description	Stereoscopic	Components		Asbestos Fibers
	Appearance	% Fibrous	% Non-fibrous	
41 / 19039959-041 Plaster Lath With Skim Coat, Skim Coat	White Non-Fibrous Homogeneous		100% Other	None Detected
42 / 19039959-042 Plaster Lath With Skim Coat, Plaster	Grey Non-Fibrous Homogeneous		100% Other	None Detected
42 / 19039959-042 Plaster Lath With Skim Coat, Skim Coat	White Non-Fibrous Homogeneous		100% Other	None Detected
43 / 19039959-043 Drywall	Grey Non-Fibrous Homogeneous	5% Cellulose	95% Other	None Detected
44 / 19039959-044 Drywall	Grey Non-Fibrous Homogeneous	5% Cellulose	95% Other	None Detected
45 / 19039959-045 Drywall	Grey Non-Fibrous Homogeneous	5% Cellulose	95% Other	None Detected
46 / 19039959-046 Plaster Lath With Skim Coat, Plaster	Grey Non-Fibrous Homogeneous		100% Other	None Detected
46 / 19039959-046 Plaster Lath With Skim Coat, Skim Coat	White Non-Fibrous Homogeneous		100% Other	None Detected
47 / 19039959-047 Plaster Lath With Skim Coat, Plaster	Grey Non-Fibrous Homogeneous		100% Other	None Detected
47 / 19039959-047 Plaster Lath With Skim Coat, Skim Coat	White Non-Fibrous Homogeneous		100% Other	None Detected

Analyst:

Approved Signatory:

Analysis Date: 8/16/2019

Date: 8/16/2019



SanAir ID Number

19039959

FINAL REPORT

8/16/2019 4:27:44 PM

**Name:** Envirotech, LLC  
**Address:** 1525 S. Broadway  
St. Louis, MO 63104  
**Phone:** 713-782-4411

**Project Number:** 14386**P.O. Number:****Project Name:** Five Story Office Building**Collected Date:** 8/5/2019 - 8/6/2019**Received Date:** 8/9/2019 9:55:00 AM

Analyst: Pisula, Nicholas

**Asbestos Bulk PLM EPA 600/R-93/116**

SanAir ID / Description	Stereoscopic	Components		Asbestos Fibers
	Appearance	% Fibrous	% Non-fibrous	
48 / 19039959-048 Plaster Lath With Skim Coat, Plaster	Grey Non-Fibrous Homogeneous		100% Other	None Detected
48 / 19039959-048 Plaster Lath With Skim Coat, Skim Coat	White Non-Fibrous Homogeneous		100% Other	None Detected
49 / 19039959-049 Drywall	Grey Non-Fibrous Homogeneous	5% Cellulose	95% Other	None Detected
50 / 19039959-050 Drywall	Grey Non-Fibrous Homogeneous	5% Cellulose	95% Other	None Detected
51 / 19039959-051 Drywall	Grey Non-Fibrous Homogeneous	5% Cellulose	95% Other	None Detected
52 / 19039959-052 Joint Compound	White Non-Fibrous Homogeneous		100% Other	None Detected
53 / 19039959-053 Joint Compound	White Non-Fibrous Homogeneous		100% Other	None Detected
54 / 19039959-054 Joint Compound	White Non-Fibrous Homogeneous		100% Other	None Detected
55 / 19039959-055 Floor Tile Mastic	Black Non-Fibrous Homogeneous		97% Other	3% Chrysotile
56 / 19039959-056 Floor Tile Mastic	Black Non-Fibrous Homogeneous		97% Other	3% Chrysotile

Analyst:

Approved Signatory:

Analysis Date: 8/16/2019

Date: 8/16/2019



SanAir ID Number

19039959

FINAL REPORT

8/16/2019 4:27:44 PM

**Name:** Envirotech, LLC  
**Address:** 1525 S. Broadway  
St. Louis, MO 63104  
**Phone:** 713-782-4411

**Project Number:** 14386**P.O. Number:****Project Name:** Five Story Office Building**Collected Date:** 8/5/2019 - 8/6/2019**Received Date:** 8/9/2019 9:55:00 AM

Analyst: Pisula, Nicholas

**Asbestos Bulk PLM EPA 600/R-93/116**

SanAir ID / Description	Stereoscopic	Components		Asbestos Fibers
	Appearance	% Fibrous	% Non-fibrous	
57 / 19039959-057 Floor Tile Mastic	Black Non-Fibrous Homogeneous		97% Other	3% Chrysotile
58 / 19039959-058 Carpet Mastic	Green Non-Fibrous Homogeneous		100% Other	None Detected
59 / 19039959-059 Carpet Mastic	Green Non-Fibrous Homogeneous		100% Other	None Detected
60 / 19039959-060 Carpet Mastic	Green Non-Fibrous Homogeneous		100% Other	None Detected
61 / 19039959-061 Elevator Brake Shoe	Brown Fibrous Homogeneous	40% Cellulose	10% Other	50% Chrysotile
62 / 19039959-062 Plaster Lath With Skim Coat, Plaster	Grey Non-Fibrous Homogeneous		100% Other	None Detected
62 / 19039959-062 Plaster Lath With Skim Coat, Skim Coat	White Non-Fibrous Homogeneous		100% Other	None Detected
63 / 19039959-063 Plaster Lath With Skim Coat, Plaster	Grey Non-Fibrous Homogeneous		100% Other	None Detected
63 / 19039959-063 Plaster Lath With Skim Coat, Skim Coat	White Non-Fibrous Homogeneous		100% Other	None Detected
64 / 19039959-064 Plaster Lath With Skim Coat, Plaster	Grey Non-Fibrous Homogeneous		100% Other	None Detected

Analyst:

Approved Signatory:

Analysis Date: 8/16/2019

Date: 8/16/2019



SanAir ID Number

19039959

FINAL REPORT

8/16/2019 4:27:44 PM

**Name:** Envirotec, LLC  
**Address:** 1525 S. Broadway  
St. Louis, MO 63104  
**Phone:** 713-782-4411

**Project Number:** 14386**P.O. Number:****Project Name:** Five Story Office Building**Collected Date:** 8/5/2019 - 8/6/2019**Received Date:** 8/9/2019 9:55:00 AM

Analyst: Pisula, Nicholas

**Asbestos Bulk PLM EPA 600/R-93/116**

SanAir ID / Description	Stereoscopic	Components		Asbestos Fibers
	Appearance	% Fibrous	% Non-fibrous	
64 / 19039959-064 Plaster Lath With Skim Coat, Skim Coat	White Non-Fibrous Homogeneous		100% Other	None Detected
65 / 19039959-065 Drywall	Grey Non-Fibrous Homogeneous	5% Cellulose	95% Other	None Detected
66 / 19039959-066 Drywall	Grey Non-Fibrous Homogeneous	5% Cellulose	95% Other	None Detected
67 / 19039959-067 Drywall	Grey Non-Fibrous Homogeneous	5% Cellulose	95% Other	None Detected
68 / 19039959-068 Joint Compound	White Non-Fibrous Homogeneous		100% Other	None Detected
69 / 19039959-069 Joint Compound	White Non-Fibrous Homogeneous		100% Other	None Detected
70 / 19039959-070 Joint Compound	White Non-Fibrous Homogeneous		100% Other	None Detected
71 / 19039959-071 Carpet Mastic	Black Non-Fibrous Homogeneous		96% Other	4% Chrysotile
72 / 19039959-072 Carpet Mastic	Blue Non-Fibrous Homogeneous		100% Other	None Detected
73 / 19039959-073 Carpet Mastic	Black Non-Fibrous Homogeneous		96% Other	4% Chrysotile

Analyst:

Approved Signatory:

Analysis Date: 8/16/2019

Date: 8/16/2019



SanAir ID Number

19039959

FINAL REPORT

8/16/2019 4:27:44 PM

**Name:** Envirotech, LLC  
**Address:** 1525 S. Broadway  
St. Louis, MO 63104  
**Phone:** 713-782-4411

**Project Number:** 14386**P.O. Number:****Project Name:** Five Story Office Building**Collected Date:** 8/5/2019 - 8/6/2019**Received Date:** 8/9/2019 9:55:00 AM

Analyst: Pisula, Nicholas

**Asbestos Bulk PLM EPA 600/R-93/116**

SanAir ID / Description	Stereoscopic	Components		Asbestos Fibers
	Appearance	% Fibrous	% Non-fibrous	
74 / 19039959-074 Drywall	Grey Non-Fibrous Homogeneous	5% Cellulose	95% Other	None Detected
75 / 19039959-075 Drywall	Grey Non-Fibrous Homogeneous	5% Cellulose	95% Other	None Detected
76 / 19039959-076 Drywall	Grey Non-Fibrous Homogeneous	5% Cellulose	95% Other	None Detected
77 / 19039959-077 Joint Compound	White Non-Fibrous Homogeneous		100% Other	None Detected
78 / 19039959-078 Joint Compound	White Non-Fibrous Homogeneous		100% Other	None Detected
79 / 19039959-079 Joint Compound	White Non-Fibrous Homogeneous		100% Other	None Detected
80 / 19039959-080 Carpet Mastic	Blue Non-Fibrous Homogeneous		100% Other	None Detected
81 / 19039959-081 Carpet Mastic	Blue Non-Fibrous Homogeneous		100% Other	None Detected
82 / 19039959-082 Carpet Mastic	Various Non-Fibrous Heterogeneous		100% Other	None Detected
83 / 19039959-083 Carpet Mastic	Tan Non-Fibrous Homogeneous		100% Other	None Detected

Analyst:

Approved Signatory:

Analysis Date: 8/16/2019

Date: 8/16/2019





SanAir ID Number  
**19039959**  
FINAL REPORT  
8/16/2019 4:27:44 PM

**Name:** Envirotech, LLC  
**Address:** 1525 S. Broadway  
St. Louis, MO 63104  
**Phone:** 713-782-4411

**Project Number:** 14386  
**P.O. Number:**  
**Project Name:** Five Story Office Building  
**Collected Date:** 8/5/2019 - 8/6/2019  
**Received Date:** 8/9/2019 9:55:00 AM

Analyst: Pisula, Nicholas

### Asbestos Bulk PLM EPA 600/R-93/116

SanAir ID / Description	Stereoscopic	Components		Asbestos Fibers
	Appearance	% Fibrous	% Non-fibrous	
84 / 19039959-084 Carpet Mastic	Various Non-Fibrous Heterogeneous		98% Other	2% Chrysotile
85 / 19039959-085 Carpet Mastic	Various Non-Fibrous Heterogeneous		98% Other	2% Chrysotile
86 / 19039959-086 Floor Tile Mastic	Black Non-Fibrous Homogeneous		97% Other	3% Chrysotile
87 / 19039959-087 Floor Tile Mastic	Black Non-Fibrous Homogeneous		97% Other	3% Chrysotile
88 / 19039959-088 Floor Tile Mastic	Black Non-Fibrous Homogeneous		97% Other	3% Chrysotile
89 / 19039959-089 Sink Dampener	Beige Non-Fibrous Homogeneous		100% Other	None Detected

Analyst: 

Approved Signatory: 

Analysis Date: 8/16/2019

Date: 8/16/2019

## **Disclaimer**

The final report cannot be reproduced, except in full, without written authorization from SanAir. Fibers smaller than 5 microns cannot be seen with this method due to scope limitations. The accuracy of the results is dependent upon the client's sampling procedure and information provided to the laboratory by the client. SanAir assumes no responsibility for the sampling procedure and will provide evaluation reports based solely on the sample and information provided by the client. This report may not be used by the client to claim product endorsement by NVLAP or any other agency of the U.S. government. Samples are held for a period of 60 days.

For NY state samples, method EPA 600/M4-82-020 is performed.

Polarized- light microscopy is not consistently reliable in detecting asbestos in floor covering and similar non-friable organically bound materials. Quantitative transmission electron microscopy is currently the only method that can be used to determine if this material can be considered or treated as non-asbestos containing.

### **Asbestos Certifications**

NVLAP lab code 200870

City of Philadelphia: ALL-460

PA Department of Environmental Protection Number: 68-05397

California License Number: 2915

Colorado License Number: AL-23143

Connecticut License Number: PH-0105

Massachusetts License Number: AA000222

Maine License Number: LB-0075

New York ELAP lab ID: 11983

Rhode Island License Number: AAL-126

Texas Department of State Health Services License Number: 300440

Commonwealth of Virginia 3333000323

Washington State License Number: C989

West Virginia License Number: LT000566

Vermont License: AL166318

Revision Date: 11/30/2017