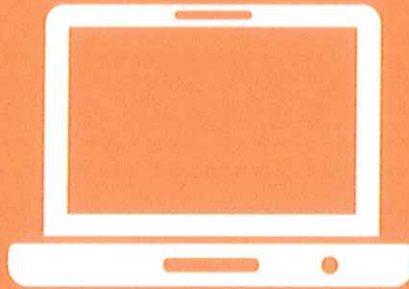


Faculty, staff, students, vendors, and members of the public can file a report.

## Risk, Fraud, & Misconduct Hotline



(888) 501-3850



The hotline link is located in the homepage footer of any A&M System Member website.

## Internet Resources and Contacts

### Contacts

- A&M System Hotline, (888) 501-3850, <https://secure.ethicspoint.com/domain/media/en/gui/19681/index.html>
- System Member's Compliance Offices, <http://www.tamus.edu/legal/ethics-and-compliance/compliance-officers/>

### Laws

- Executive Order RP 36, <http://www.lrl.state.tx.us/scanned/govdocs/Rick%20Perry/2004/RP36.pdf>
- The Texas State Auditor's Office Fraud, Waste, & Abuse Hotline, <http://www.sao.state.tx.us>
- Texas Whistleblower Act, <http://www.statutes.legis.state.tx.us/Docs/GV/htm/GV.554.htm>

### System Policies and Regulations

- System Policy 10.02, Control of Fraud, Waste and Abuse, <http://policies.tamus.edu/10-02.pdf>
- System Regulation 10.02.01, Control of Fraud, Waste and Abuse, <http://policies.tamus.edu/10-02-01.pdf>
- System Policy 32.01, Employee Complaint and Appeal Procedures, section 3, <http://policies.tamus.edu/32-01.pdf>
- System Policy 33.04, Use of System Resources, <http://policies.tamus.edu/33-04.pdf>