

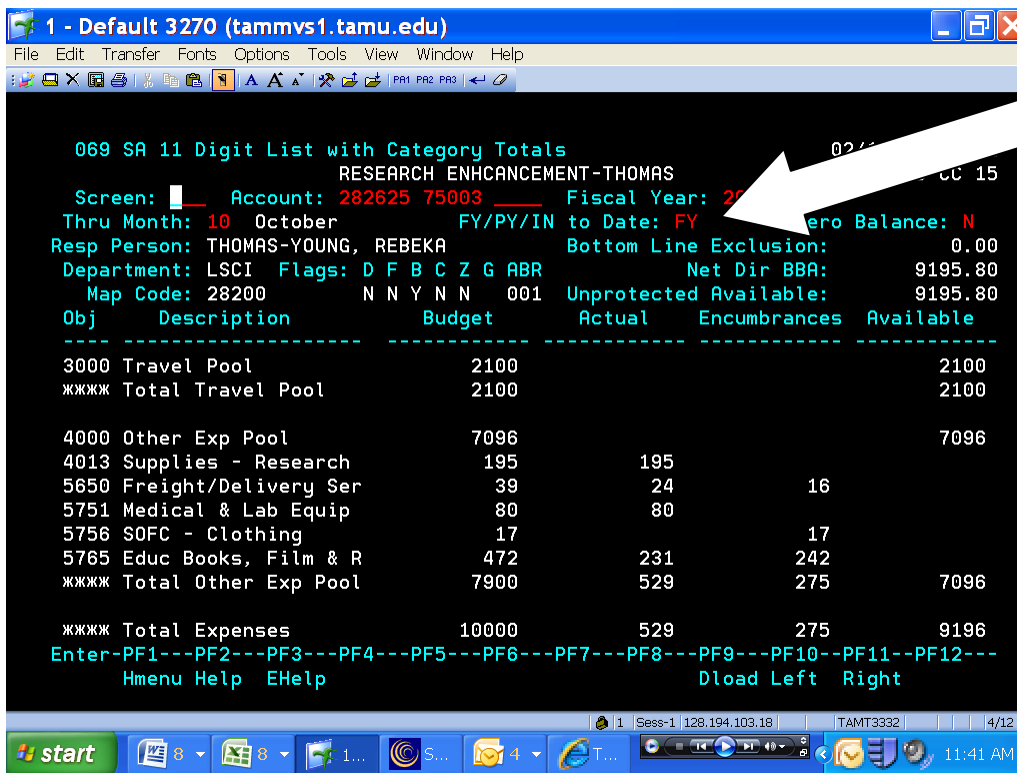
Section 08.03.02.05

BALANCES BY SUBCODE SA ACCOUNT (SCREEN 69)

The following is an excerpt from the Financial Accounting User’s Manual developed by the FAMIS Team at Texas A&M University System.

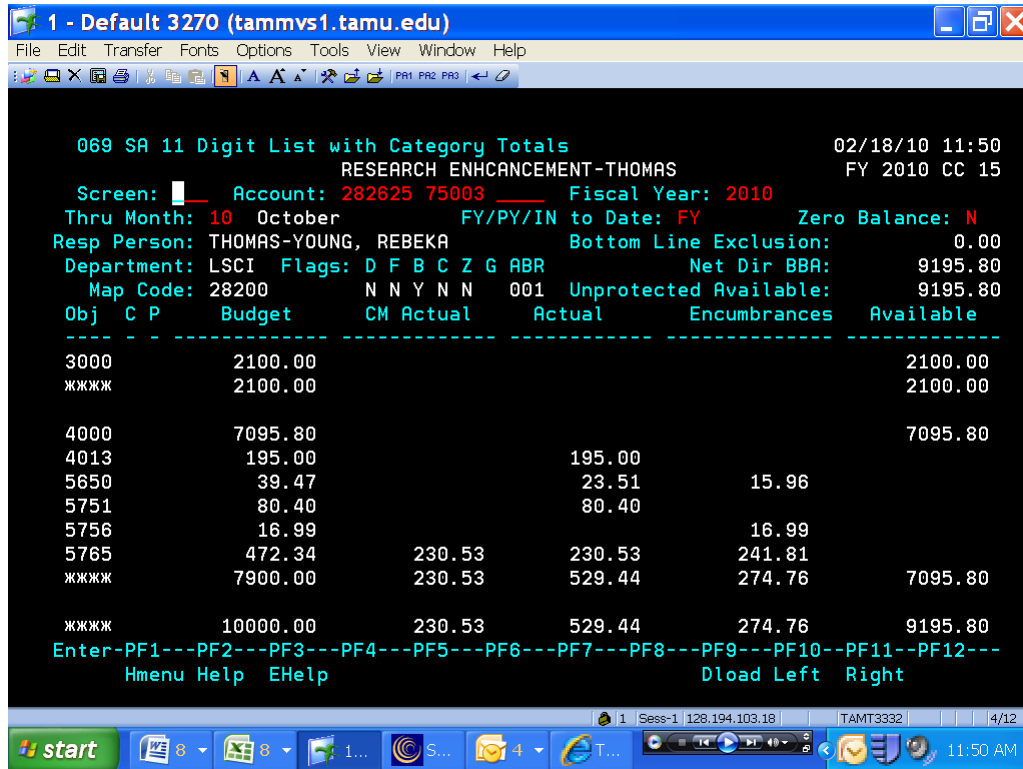
To find information on specific 11-digit accounts (Subsidiary Ledger account number plus Support Account number) you can view Screen 69. Information is totaled through a specified month.

Screen 69 - Support Account List with Category Totals (Panel 1)



If PY or IN, the display won't be correct unless the year-end process flag is set to 'P' on Screen 6.

Screen 69 - Support Account List with Category Totals (Panel 2)



BASIC STEPS

- Advance to Screen 69.
- You must enter a valid account number.
- Press <ENTER> to view the information.

FIELD DESCRIPTIONS

Action Line Information

Account 15 digits **Entry Required**
 Enter a Subsidiary Ledger + Support Account + Object Code.

Fiscal Year: 4 digits
 Indicate the current fiscal year.

Screen Information

Thru Month: 2 digits
 Identify through which month the

information is to be listed.

FY/PY/IN to Date:	2 characters FY = Fiscal Year PY = Project Year IN = Inception of the project to date. If 'PY' or 'IN', the display won't be correct unless the year-end process flag is set to 'P' on Screen 6.
Resp Person:	30 characters Identifies the name of the person responsible for the account.
Exclude from Bottom Line:	12 digits Gives the dollar figure that is excluded from the total.
Department:	4 characters Designates the department responsible for the account.
Flags:	1 character Indicated values for Flag Maintenance. Y - Value for flag is "on." N - Value for flag is "off."
Net Dir BBA:	12 digits Shows the Budget Balance Available attributed to direct expenses.
Map Code:	5 digits The General Ledger to which the Subsidiary Ledger is tied.
Unprotected Available:	12 digits Displays the unprotected portion of budget that is not under spending restrictions set on Screen 10C.
Obj:	4 digits Object codes defining categories where money is expensed or received.

Description:	30 characters Provides written description of object code.
Budget:	12 digits Funds budgeted and the allocation of these funds to expenses.
Actual:	12 digits Actual dollar amounts spent in object code categories.
Encumbrances:	12 digits Gives the dollar amounts encumbered for object code categories.
Available:	12 characters Available funds (Budgeted amounts minus Actuals and Encumbrances) from revenue and for expenses.
Panel 2:	
C:	1 character A value in this field indicates the type of Category Control in effect. R = Reject W = Warning Blank is no control
P:	1 character A 'P' indicates that this budget category is protected from borrowing funds by other budget categories.
CM Actual:	12 digits Gives the actual dollar amount for the current month.
Actual:	14 digits Gives actual dollar amount spent/received on object code item.

- Encumbrances:** 12 digits
Gives dollar amounts committed for specified object codes.
- Available:** 12 digits
Gives dollar amounts available, in relation to the budget, for specified object codes.