



Deniz Gevrek

Professor of Economics

Director, South Texas

Economic Development

Center

FDL Veteran: Spring 2025 Edition





15 years later...



2025

EMPLOYEE SERVICE AWARD



Spring 2025 – FDL

- Planned visits:
 - **University of Texas at Austin:** Visiting Research Scholar.
 - **Wichita State University.**
 - **Católica Porto (Portugal).**
- research agenda: Employee salary satisfaction; MLB umpire labor supply.
- Advance research, student engagement & service at TAMU–CC.
- Strengthen institutional partnerships.
- Support **South Texas Economic Development Center** (STEDC)'s mission in regional economic development.

FDL activities

- **University of Texas at Austin, TX:** Residence + Connected with Texas Music Office & TxDOT
- **Wichita State University:** Residence + Research Collaboration + Engaged with CEDBR (56-year-old economic development center)
- STEDC work with local, state stakeholders. Set up STEDC team of 4 PhD economists.
- 2 research presentations at leading national/international conferences. One with an undergraduate student.
- Highlight of my career (TxDOT maritime grant scorer) >\$9B.
- Generated multiple economic impact studies & presented to Boards, City Council and other decision makers.
- **AEA Conference on Teaching and Research in Economic Education (CTREE)**
- Networking + Collaborations



UT AUSTIN

- Met with department chair, senior faculty, and admin folks.
- Attended research seminars (labor economics & public policy).
- Built foundation for future collaborations
- Connected with TxDOT Maritime Division.
- Met Director of Texas Music Office → interest in STEDC music/tourism research.

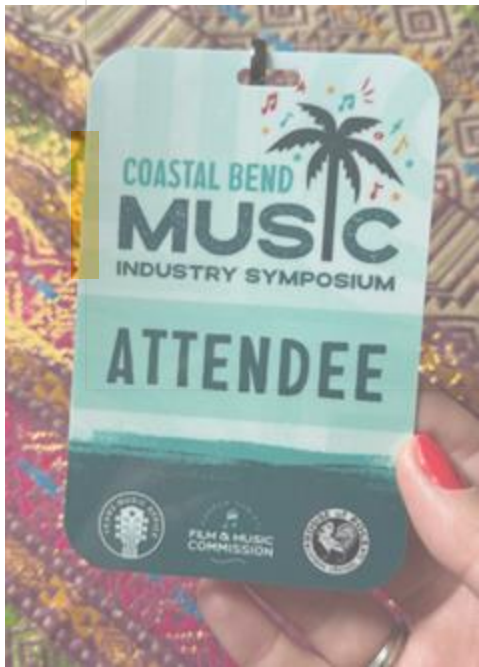




Undergraduate Student Coauthored Project

- Project: 'Gender Gap in Adolescent Bullying in the U.S. and the Role of Immigrant Status.'
- Used national data; detailed study on the complete picture of bullying.
- Presented at Midwest Economics Association (Kansas City, Mar 2025).
- Manuscript: journal submission stage.
- Student: Internship at Port of CC → full-time job; graduating Dec 2025
- First-time undergraduate collaboration → mentorship success.





JTH TE
VELOPN

**Coastal Bend Music Industry Symposium, Economic
Impact of Live Music Panel, Moderator→**

Texas Music Office



**TxDOT: 89th
Legislative Session
Texas Port Mission Plan
(PMP) Scoring
Committee.**

- Port Visits
- TxDOT Maritime,
Austin, TX



**TxDOT Maritime
Division**



**SOUTH TEXAS ECONOMIC
DEVELOPMENT CENTER**



UT AUSTIN



Wichita State University

- Collaborated with co-author.
- Completed manuscript: 'The Familiar Road: Examining Colleague Relationships and Frequent Business Traveler Performance.'
- Presented at **Academy of Management Annual Meeting (Copenhagen, Jul 2025)**.
- Engaged with **CEDBR** (56-year-old economic development center).
- **Met Director** Dr. Bekah Selby-Leech → insights on operations, partnerships, funding.



.....
WICHITA STATE
UNIVERSITY

CEDBR 
Center for Economic Development
and Business Research
BARTON SCHOOL OF BUSINESS
WICHITA STATE UNIVERSITY

Center For Economic Development And Business Research



Bekah Selby-Leach >>

**Director, Center for Economic
Development and Business Research**

bekah.selby@wichita.edu

(316) 978-3290



Craig

Project

craig.c

(316)



Andrea Wilson >>

**Manager Communications and
Marketing**

andrea.wilson@wichita.edu

316-978-3225

Highlight of my career!

TxDOT maritime Service



- 1 of 5 members of the **89th Legislative Session** TxDOT Maritime Texas Port Mission Plan (PMP) Scoring Committee.
- Evaluated 125+ projects totaling more than **\$9.5B**
- Helped **allocate \$1B in maritime grants.**
- Work spanned 4 months (10+ visits to Texas Ports).

TxDOT Maritime Division



Connecting you with Texas.

89th Legislative Session Texas Port Mission Plan Project Scoring Committee



Lisette Mason
TxDOT Maritime Division
Port Project Manager



Nikki Kantelis
Texas Tech – Rawls College of Business
Faculty Director
Energy Commerce Program



Margaret Kidd
University of Houston
Program Director
Supply Chain & Logistics Technology



Robert Dubois
Lamar University
Executive Director
Center for Advances in Port Management



Dr. Deniz Gevrek
Texas A&M Corpus Christi
Professor of Economics

me!



SOUTH TEXAS ECONOMIC
DEVELOPMENT CENTER

South Texas Economic Development Center

- Team of 4 Ph.D. economists. Sponsored research.
- Expanded applied research & community engagement. IMPLAN
- many high-impact studies (House of Rock, Rally CU, ArtWalk, TAMU–CC Impact, Port of CC, Diocese, Nueces County Family Reunification, Hooks Baseball, Flour Bluff ISD Bonds). Publication potential...
- Attended events, networking with community, 8am-8pm days norm.
- Presented governing boards: TIRZ#3, Rally Credit Union, & Downtown Management District, City Council amplifying TAMU-CC's community and economic engagement.
- Moderated Coastal Bend Music Symposium panel (Feb 2025).
- New Director of STEDC (Jun 1, 2025).

STEDC Service



TEXAS A&M UNIVERSITY-CORPUS CHRISTI



SOUTH TEXAS ECONOMIC
DEVELOPMENT CENTER



2022-2024 Economic Impact of Corpus Christi Hooks and Whataburger Field



BY SOUTH TEXAS ECONOMIC
DEVELOPMENT CENTER



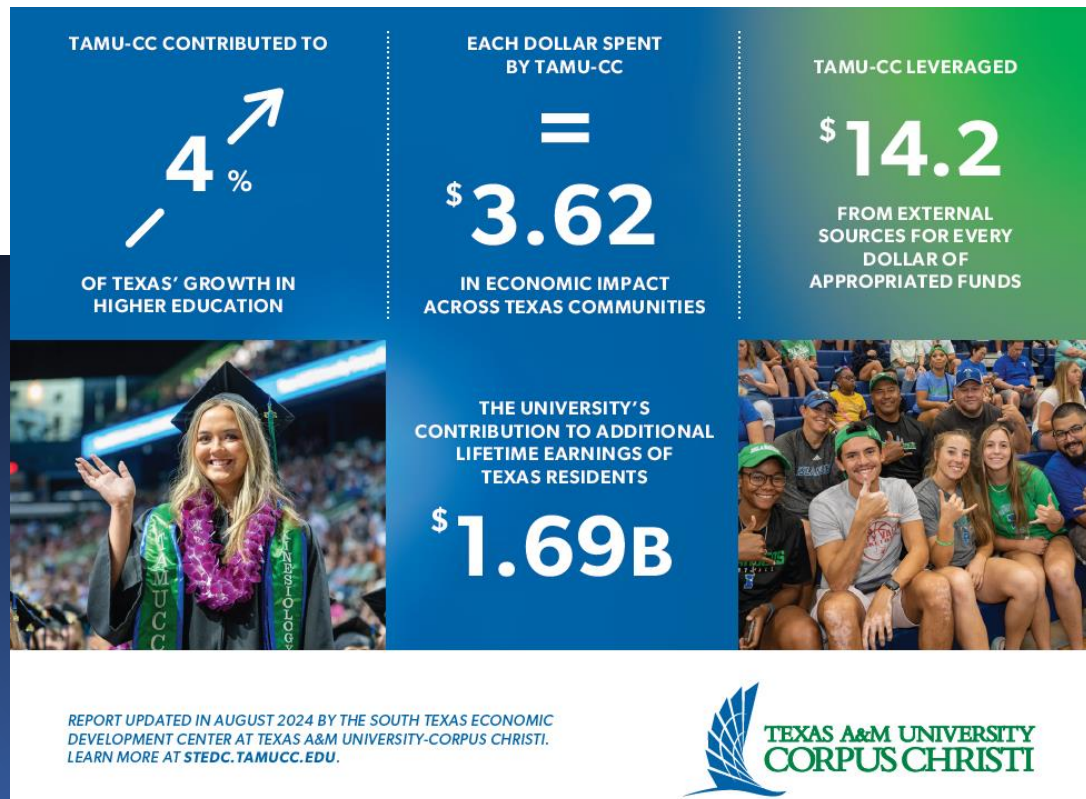
SOUTH TEXAS ECONOMIC
DEVELOPMENT CENTER



Economic Impact Studies



Economic Impact TAMU-CC



ARTWALK

BLOCK PARTIES

- 1 **Rockit's Whiskey Bar & Saloon** | Live Music | \$1 Pizza Slices | Pop-Up Bar
- 2 **House of Rock** | Twisted Tea Music Stage & Patio Party | Pop-Up Vendors | Pop-Up Bar
- 3 **Starr St. Showdown - DesireArts** | Live Graffiti | Breakdancing | Pop-up Vendors
- 4 **Starr St. East** | Pop-Up Vendors by CATS Market | Food Trucks | CATS Express
- 5 **K Space Contemporary** | Contemporary Exhibitions | Pop-Up Vendors
- 6 **The Point of CC** | Corona Premier Music Stage & Patio Party | Pop-Up Vendors | Local Art
- 7 **Cassidy's Irish Pub** | Miller Lite and Coors Light Music Stage & Patio Party | Pop-Up Vendors by Weird Corpus
- 8 **Street Food Block Party** | Local Street Food Favorites | DJ
- 9 **S Chaparral St.** | Live Music | Pop-Up Vendors | DMD Info Booth
- 10 **La Playa by the Bay** | Shiner Light Blonde Music Stage & Patio Party | Pop-Up Bar | Pop-Up Vendors

PARK PARTIES

- 11 **Artesian Park Party** | Pop-Up Vendors | Food Trucks | Music by DJ Eric

EVENTS & LIVE MUSIC

- 13 **Art Museum of South Texas (AMST)** | FREE Admission | NEW Monthly Art Exhibition
- 14 **B.U.S.** | Full Bar & Food | Pop-Up Vendors by CC Dog Mama | Live Music
- 15 **Peace of Mind Massage & Natural Healing** | Pop-Up Vendors | Live Music
- 16 **MA Gallery** | Contemporary Art | Buy-Sell-Trade | Pop-Up Vendors
- 17 **Produce Bar Co.** | Local Art Gallery | Beer & Wine
- 18 **ArtCastle Printing & Imaging** | Fine Art Prints | Paintings by Local Artists
- 19 **RETRO** | Family Friendly | Full Menu & Bar | Arcade | Live Music | Pop-Up Vendors
- 20 **Executive Surf Club** | Full Menu & Bar | Pop-Up Vendors by Water St. Market | Live Music
- 21 **The Exchange** | Full Menu & Bar | Live Music
- 22 **20/20 Vintage** | Locally-Owned Vintage Boutique | DJ | Pop-Up Vendors
- 23 **The Artisan Stage** | DJ & Live Music | Pop-Up Vendors | Local Creators Showcase
- 24 **The Art Center of CC** | NEW Art Exhibits Monthly | FREE Admission | Gallery 41

2024

Economic & Social Impact of Artwalk

TOURISM & RECREATIONAL STUDY

BY STEDC





DMD Board Presentation April 2025 Economic & Social Impact of Artwalk

FIRST FRIDAY ARTWALK

CK PARTIES

- by Bar & Saloon | Live Slices | Pop-Up Bar
- Twisted Tea Music Stage & Pop-Up Vendors | Pop-Up Bar
- own - DesireArts | Live dancing | Pop-up Vendors
- on He Vendors by CATS

EVENTS & LIVE MUSIC

- 13 Art Museum of South Texas (AMST) | FREE Admission | NEW Monthly Art Exhibition
- 14 B.U.S. | Full Bar & Food | Pop-Up Vendors by CC Dog Mama | Live Music
- 15 Peace of Mind Massage & Natural Healing | Pop-Up Vendors | Live Music

Gallery | Vintage Threads | Buy-Sell-Trade | Wine

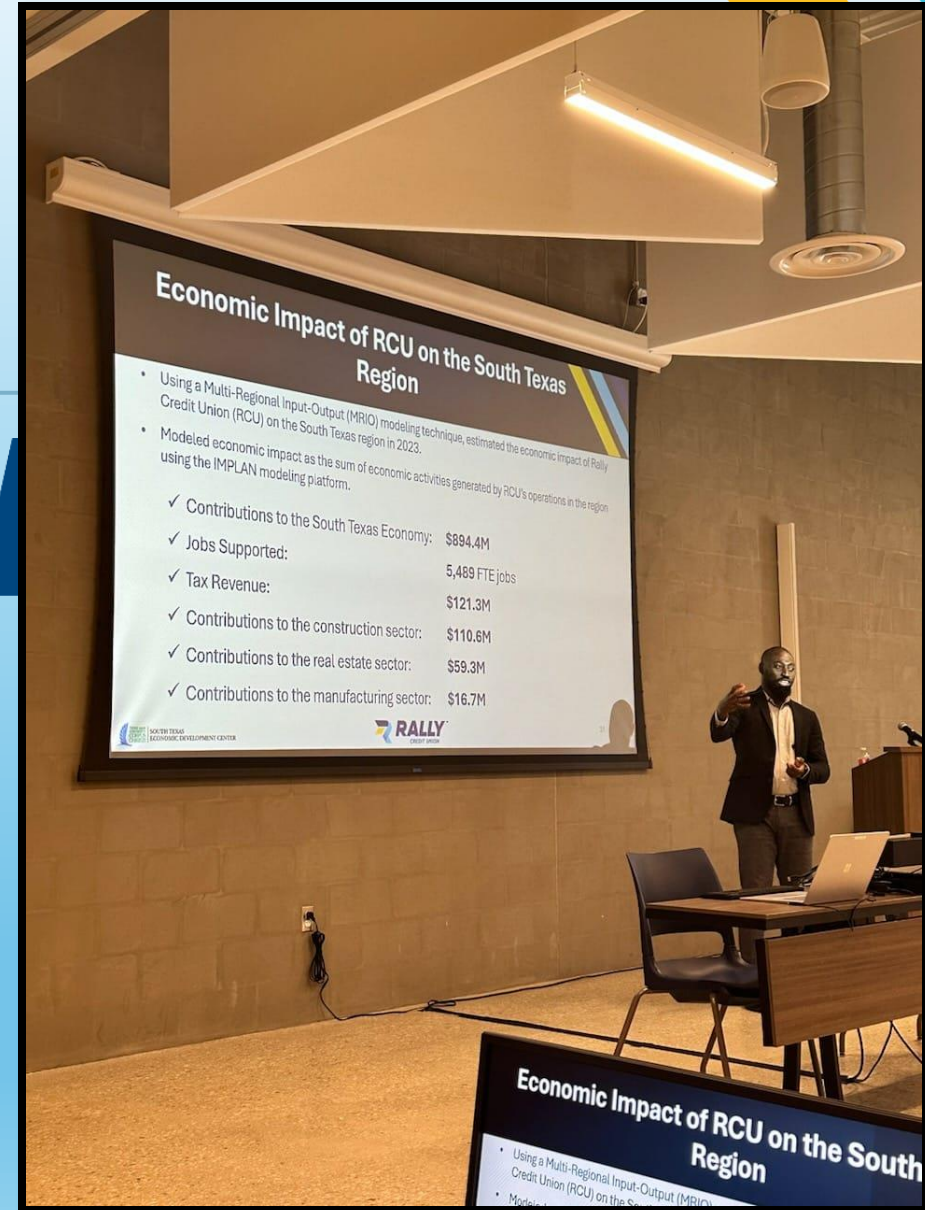
Mesquite

LA RETA PART

music by Joe Greene

25 The Annex | Craft Cocktails | Live Music

The Im Cr on Te





Economic Impact of House of Rock & Live Music Events

2025 FDL Accomplishments & Impact (Short Term)

- 2 manuscripts (undergraduate student coauthor) + 1 new.
- Both presented at national/international conferences.
 - In process for journal submission.
- Enhanced TAMU–CC’s visibility in academic circles.
- STEDC research informs state and regional policy decisions.
- Elevated COB and TAMU–CC as trusted partners in applied economic research.

Long Run Accomplishments: 2018 FDL

- 3 prestigious peer-reviewed publications:
 - “Explaining the Gender Test Score Gap in Mathematics: The Role of Gender Inequality,” **Economics of Education Review**, **2020**. (with Dr Gevrek)
 - “A Tale of Five Salary Raises and Schadenfreude Effect: Different Approaches to Salary Raises and Employee Satisfaction.” **Applied Economic Letters**, **2020**. (with Drs Hudgins & Spencer)
 - “The Relationship between Early-Life Conditions in the Home Country and Adult Outcomes among Child Immigrants in the United States” **Economics and Human Biology**, **2022** (with Drs Guven & Gevrek)
- presented at 3 world-class R1 universities, passed 2 IRB reviews. These accomplishments exceeded my initial proposed work for the FDL.

Impact of FDL

- Positive impact on my research, teaching, professional development and networking.
- Time to reflect and recalibrate
- Laser focus on Research, Pro dev, Service!



Shift in Focus

- Could not travel to Católica Porto due to health issues
- Maintained collaboration with colleagues in Portugal
- Began new research project (in development, Fall 2025)
- Leave remained highly productive

Advice: taking leave or applying for FDL

- Never give up!
- Take up a visiting professor residence at another institution (plan ahead).
- Seize the opportunity for research, professional development & service to others.
- Apply for travel grants (international travel grant).
- Be flexible with changing plans...pivot & conquer.
- Contact me →

